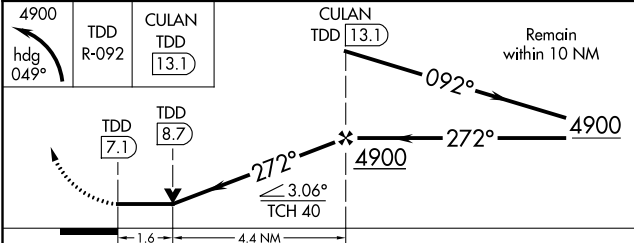
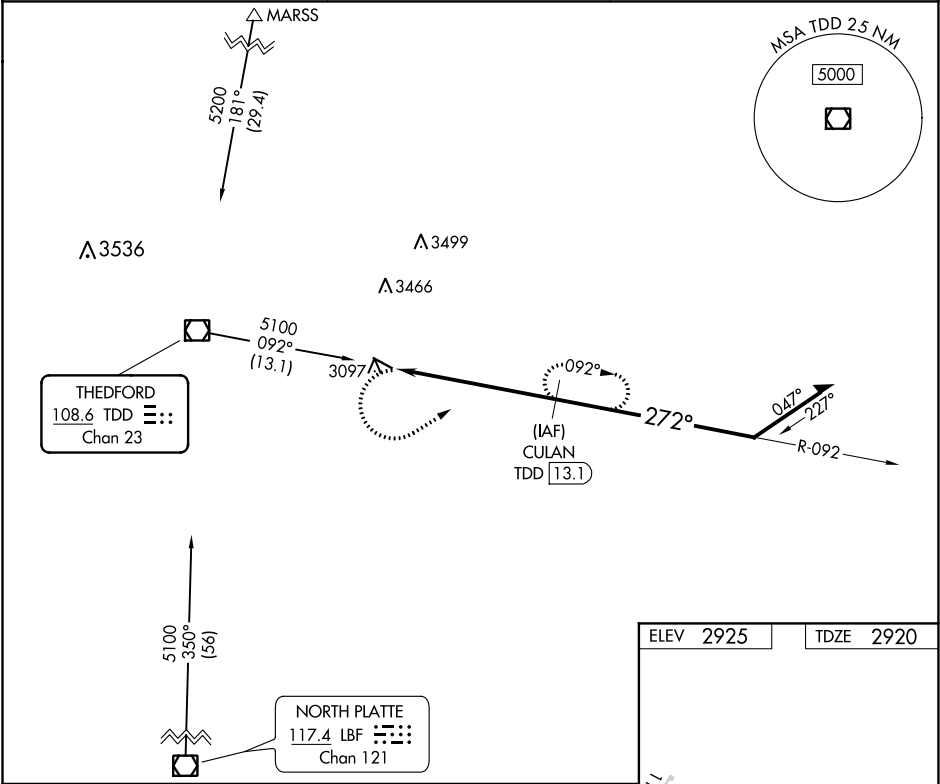


VOR/DME TDD <b>108.6</b> Chan <b>23</b>	APP CRS <b>272°</b>	Rwy ldg TDZE Apt Elev <b>4400</b> <b>2920</b> <b>2925</b>
---	------------------------	--

VOR RWY 29  
THOMAS COUNTY (TIF')

DME required.	MISSED APPROACH: Climbing left turn to 4900 on heading 049° and TDD R-092 to CULAN/TDD 13.1 DME and hold.
---------------	---

AWOS-3 <b>120.825</b>	DENVER CENTER <b>127.95 338.2</b>	CTAF <b>122.9</b>
--------------------------	--------------------------------------	----------------------



CATEGORY	A	B	C	D
S-29	3480-1	560 (600-1)	NA	
CIRCLING	3480-1	555 (600-1)	NA	

