

RNAV (GPS) RWY 35
LARNED-PAWNEE COUNTY (LQR)

▼ Baro-VNAV NA when using Great Bend altimeter setting. For uncompensated Baro-VNAV systems, LNAV/VNAV NA below -18°C or above 54°C. Rwy 35 helicopter visibility reduction below 1 SM NA. When local altimeter setting not received, use Great Bend altimeter setting and increase all DA 49 feet and LNAV/VNAV all Cats visibility $\frac{1}{8}$ SM; increase all MDA 60 feet and increase LNAV Cat C and Circling Cat C visibility $\frac{1}{4}$ SM. Circling NA to Rwy 4, 12, 22 and 30. Procedure NA at night.

MISSED APPROACH:
Climb to 4500 direct
CULMI and hold.

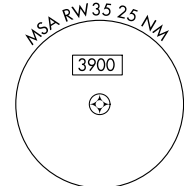
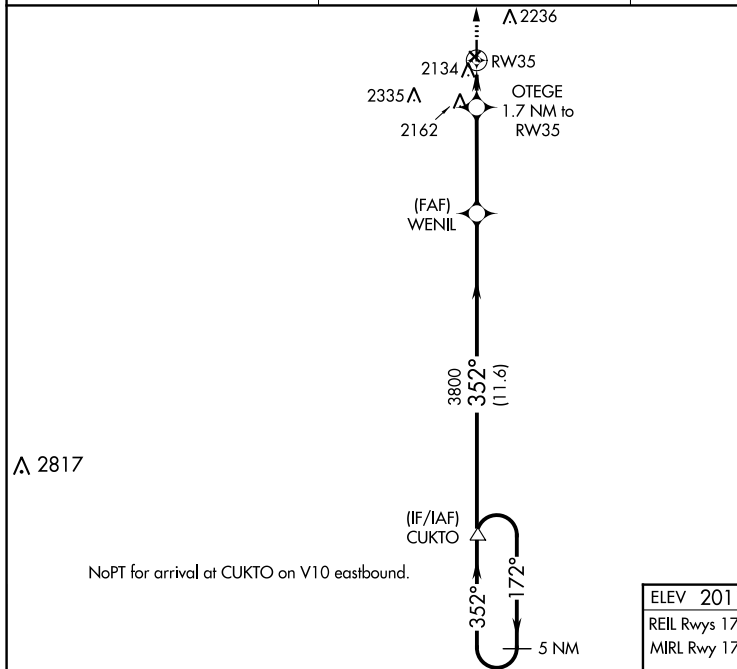
MISSED APCH FIX

5 NM

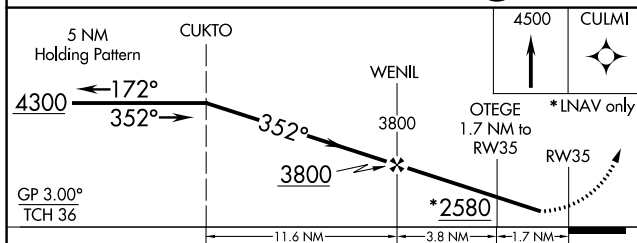
352°

172°

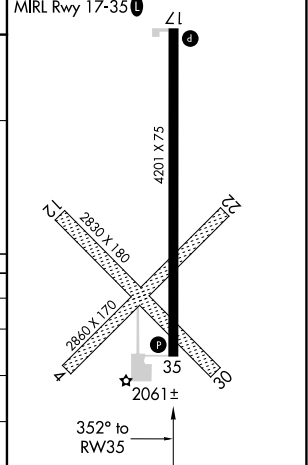
CULMI



ELEV 2011	TDZE 2012
REIL Rwy 17 and 35	
MIRL Rwy 17-35	



CATEGORY	A	B	C	D
LPV DA	2262-1	250 (300-1)		NA
LNAV/ VNAV DA	2337-1 $\frac{1}{8}$	325 (400-1 $\frac{1}{8}$)		NA
LNAV MDA	2420-1	408 (500-1)	2420-1 $\frac{1}{2}$ 408 (500-1 $\frac{1}{2}$)	NA
CIRCLING	2500-1 489 (500-1)	2600-1 589 (600-1)	2600-1 $\frac{1}{2}$ 589 (600-1 $\frac{1}{2}$)	NA



NC-2, 31 DEC 2020 to 28 JAN 2021