

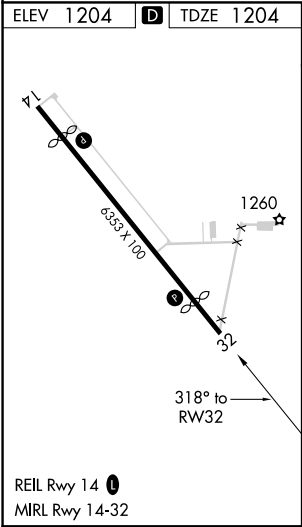
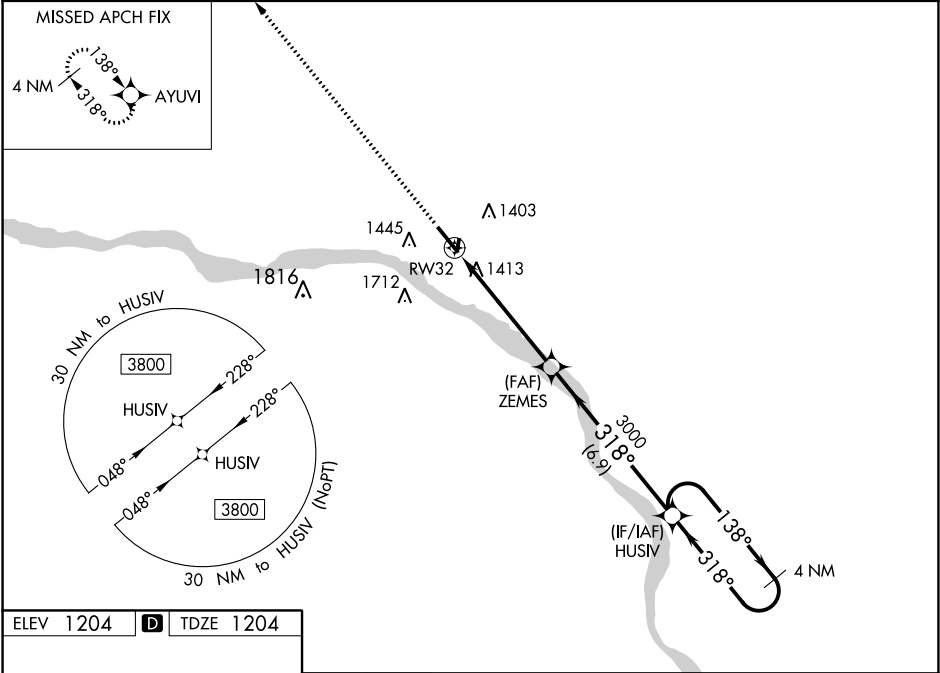
WAAS CH <b>77635</b> <b>W32A</b>	APP CRS <b>318°</b>	Rwy Idg <b>4650</b> TDZE <b>1204</b> Apt Elev <b>1204</b>
--	------------------------	---

RNAV (GPS) RWY 32  
FREMONT MUNI (F'E'T')

**⚠** For uncompensated Baro-VNAV systems, LNAV/VNAV NA below -17°C (2°F) or above 54°C (130°F).  
**⚠** DME/DME RNP-0.3 NA. Helicopter visibility reduction below 1 SM NA. When local altimeter setting not received, use Blair altimeter setting and increase all DA/MDA 60 feet; increase LNAV Cat C visibility ½ mile, and LNAV/VNAV visibility ¼ mile all Cats. Baro-VNAV and VDP NA when using Blair altimeter setting.

MISSED APPROACH:  
Climb to 3300 direct  
AYUVI and hold.

AWOS-3 <b>121.275</b>	OMAHA APP CON <b>120.1 354.05</b>	UNICOM <b>122.8</b> (CTAF) <b>📻</b>
--------------------------	--------------------------------------	--



3300 ↑	AYUVI ✧				
*LNAV only		HUSIV 4 NM Holding Pattern			
*1.4 NM to RW32		ZEMES 3000	318°	138° → ← 318°	3800
RW32	1.4 NM	4.1 NM	6.9 NM	GP 3.00° TCH 40	
CATEGORY	A	B	C	D	
LPV DA	1456-1 252 (300-1)			NA	
LNAV/ VNAV	1712-1¾ 508 (600-1¾)			NA	
LNAV MDA	1680-1	476 (500-1)	1680-1⅝ 476 (500-1⅝)	NA	
<b>C</b> CIRCLING	1760-1	556 (600-1)	2020-2½ 816 (900-2½)	NA	

NC-2, 31 DEC 2020 to 28 JAN 2021

NC-2, 31 DEC 2020 to 28 JAN 2021