

WAAS  
CH **99505**  
**W18A**

APP CRS  
**180°**

Rwy Idg  
TDZE **1497**  
Apt Elev **1498**

RNAV (GPS) RWY 18

MC PHERSON (MPR)

▼

▲ NA

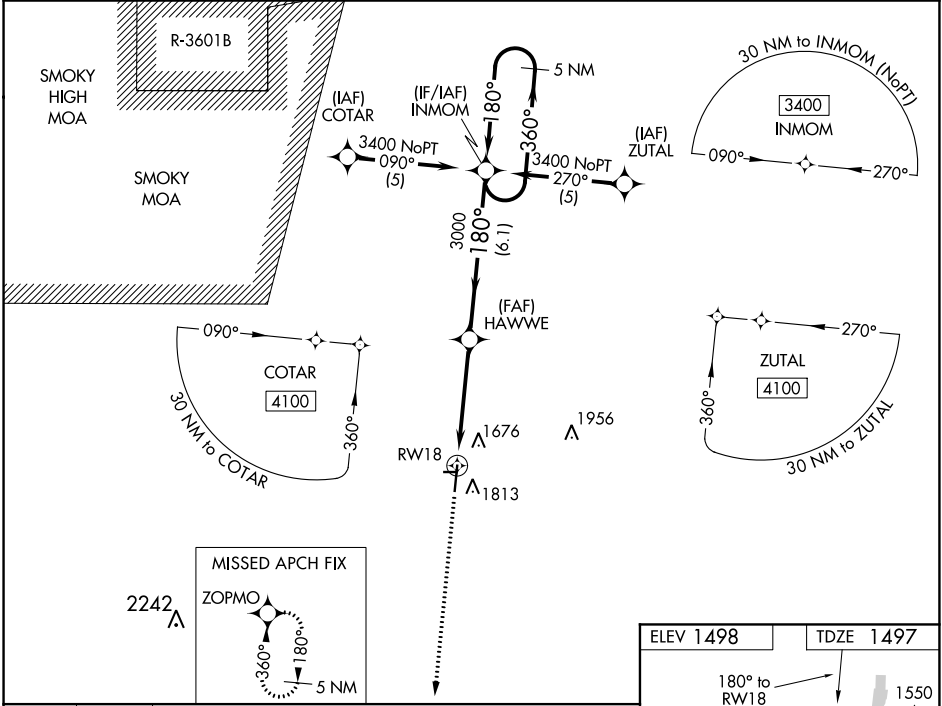
When local altimeter setting not received, use Salina altimeter setting: increase LPV DA to 1917 feet, LNAV/VNAV DA to 2120 feet and all visibilities  $\frac{3}{8}$  mile; increase all MDA 100 feet and visibility Cat C  $\frac{3}{8}$  mile. For uncompensated Baro-VNAV systems, LNAV/VNAV NA below -17°C (2°F) or above 54°C (130°F). Baro-VNAV and VDP NA when using Salina altimeter setting. DME/DME RNP-0.3 NA. Circling NA to Rwy 8 and 26.

MISSED APPROACH:  
Climb to 4100 direct ZOPMO and hold.

AWOS-3  
**119.025**

WICHITA APP CON  
**125.5 306.2**

UNICOM  
**122.8 (CTAF) 0**



4100

ZOPMO

\*LNAV only

\*1.4 NM to RW18

RW18

HAWWE

INMOM

5 NM Holding Pattern

1.4 NM

3.1 NM

6.1 NM

3000

3400

GP 3.00°

TCH 40

CATEGORY	A	B	C	D
LPV DA	1826-1 $\frac{1}{8}$	329 (400-1 $\frac{1}{8}$ )		NA
LNAV/ VNAV DA	2029-1 $\frac{7}{8}$	532 (600-1 $\frac{7}{8}$ )		NA
LNAV MDA	1980-1	483 (500-1)	1980-1 $\frac{3}{8}$ 483 (500-1 $\frac{3}{8}$ )	NA
CIRCLING	2120-1	622 (700-1)	2120-1 $\frac{3}{4}$ 622 (700-1 $\frac{3}{4}$ )	NA

