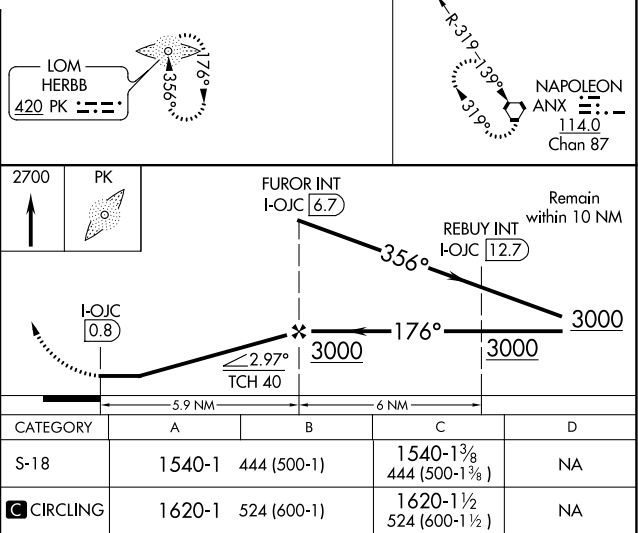
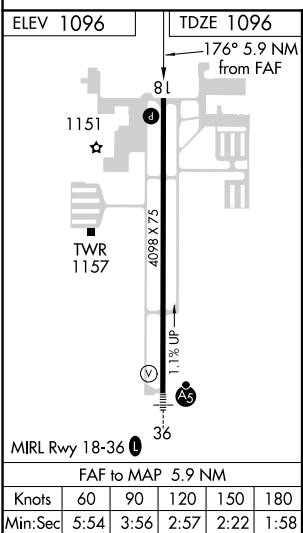
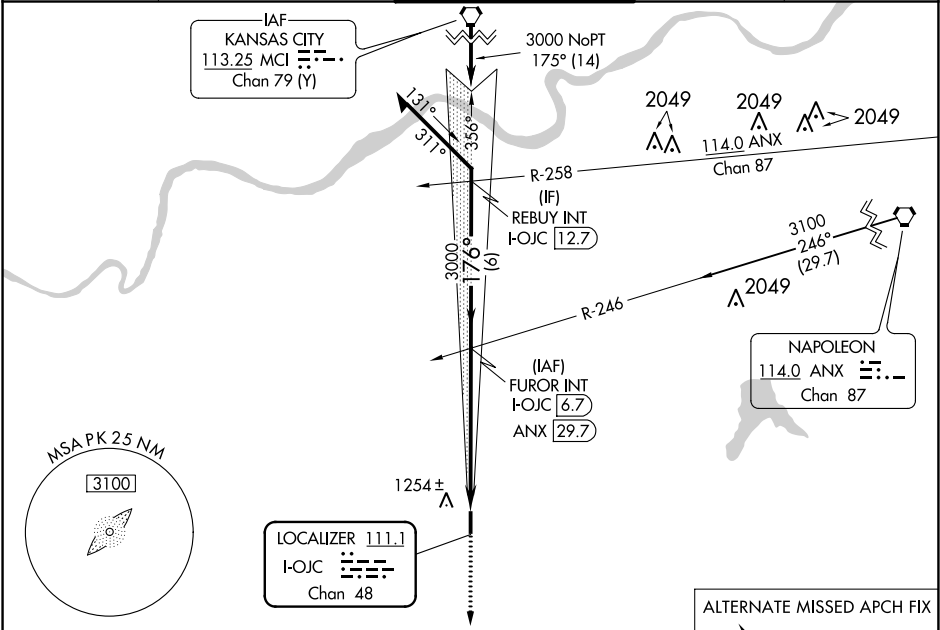


LOC/DME I-OJC <b>111.1</b> Chan <b>48</b>	APP CRS <b>176°</b>	Rwy Idg TDZE Apt Elev	<b>4098</b> <b>1096</b> <b>1096</b>
---	------------------------	-----------------------------	---

LOC RWY 18  
JOHNSON COUNTY EXECUTIVE (OJC)

ADF required. NA	MISSED APPROACH: Climb to 2700 direct HERBB LOM and hold.			
---------------------	---	--	--	--

ATIS <b>119.35</b>	KANSAS CITY APP CON <b>118.9 251.075</b>	EXECUTIVE TOWER ★ <b>126.0 (CTAF) 0 225.4</b>	GND CON <b>121.6</b>	UNICOM <b>122.95</b>
-----------------------	---	--	-------------------------	-------------------------



NC-2, 31 DEC 2020 to 28 JAN 2021

NC-2, 31 DEC 2020 to 28 JAN 2021