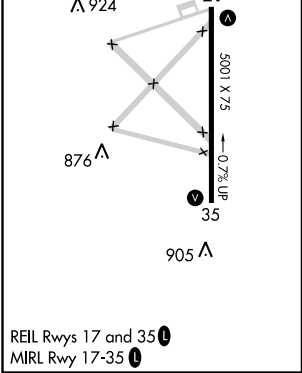
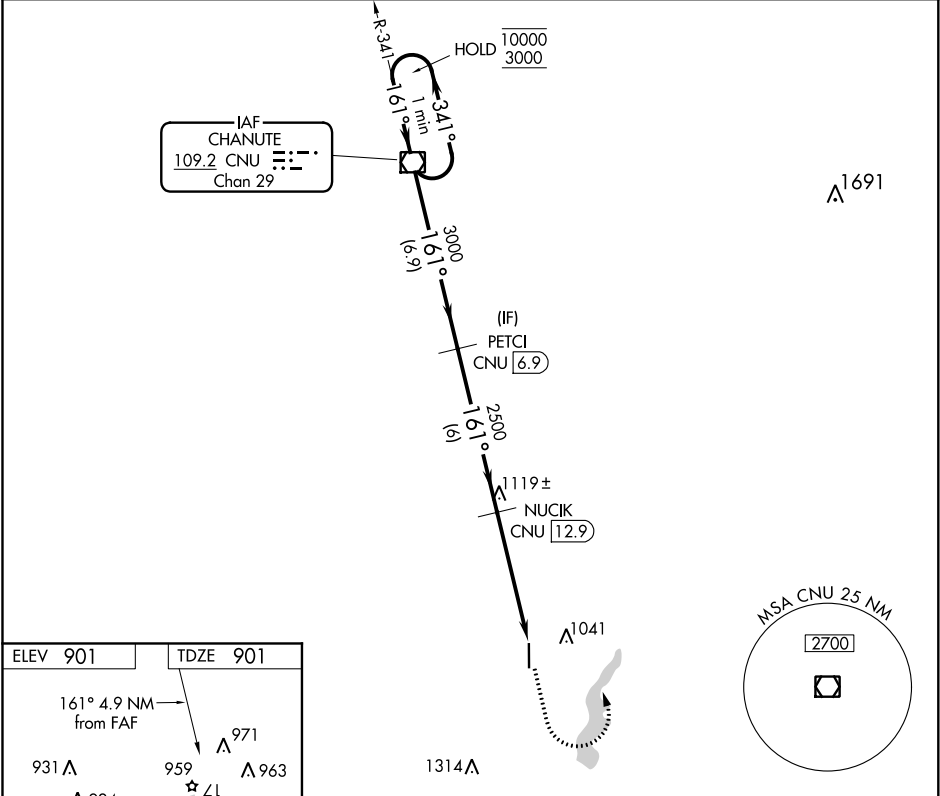


VOR/DME CNU 109.2 Chan 29	APP CRS 161°	Rwy Idg TDZE Apt Elev	5001 901 901
---	------------------------	-----------------------------	---

VOR RWY 17
TRI-CITY (PPF')

DME required	MISSED APPROACH: Climb to 1600 then climbing left turn to 3000 direct CNU VOR/DME and hold.
▼ Procedure NA at night. ▲ Rwy 17 helicopter visibility reduction below 1 SM NA.	

ASOS 118.175	KANSAS CITY CENTER 132.9 279.5	UNICOM 123.0 (CTAF) 0
------------------------	--	--



One Minute Holding Pattern		CNU VOR/DME	PETCI CNU [6.9]	1600	3000	CNU
10000 3000		← 341° 161° →	161°	3000		
				NUCIK CNU [12.9]	2500	CNU [17.8]
				3.03° TCH 35		
				6.9 NM	6 NM	4.9 NM
CATEGORY	A	B	C	D		
S-17	1380-1	479 (500-1)	1380-1 3/8 479 (500-1 3/8)	NA		
CIRCLING	1380-1	479 (500-1)	1380-1 1/2 479 (500-1 1/2)	NA		

NC-2, 31 DEC 2020 to 28 JAN 2021

NC-2, 31 DEC 2020 to 28 JAN 2021