

WAAS CH 78208 W35A	APP CRS 354°	Rwy Idg 5001 TDZE 879 Apt Elev 900
--	------------------------	---

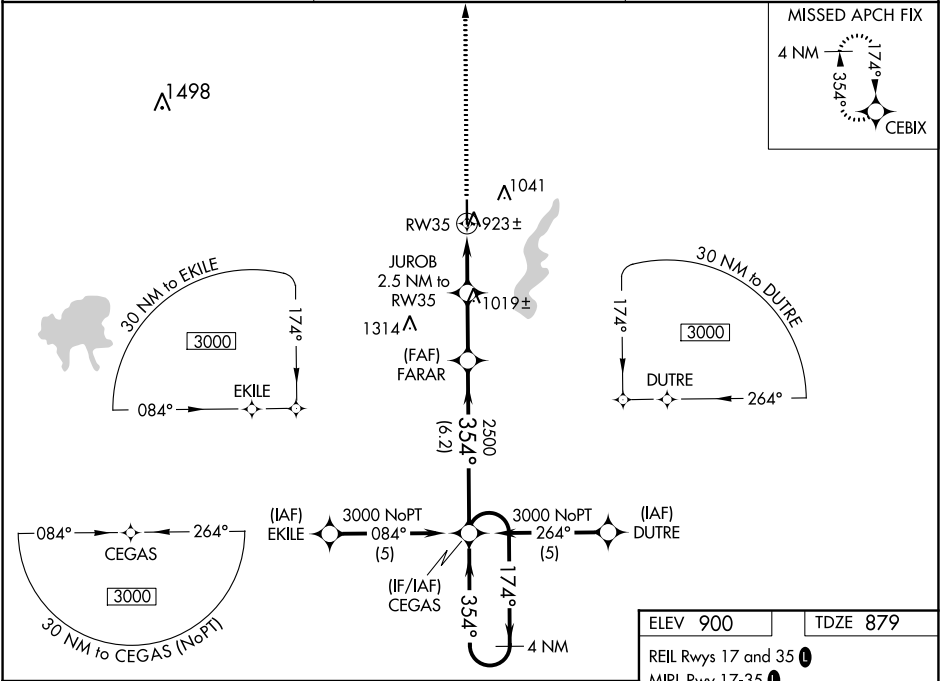
RNAV (GPS) RWY 35

TRI-CITY (PPF')

⚠ Baro-VNAV NA when using Coffeyville Muni altimeter setting. For uncompensated Baro-VNAV systems, LNAV/VNAV NA below -16°C (4°F) or above 54°C (130°F). DME/DME RNP-0.3 NA. Visibility reduction by helicopters NA. When local altimeter setting not received, use Coffeyville Muni altimeter setting and increase all DA 54 feet and LNAV/VNAV visibility ¼ mile all Cats; increase all MDA 60 feet.

MISSED APPROACH: Climb to 3000 direct CEBIX and hold.

ASOS 118.175	KANSAS CITY CENTER 132.9 279.5	UNICOM 123.0 (CTAF) 0
------------------------	--	---------------------------------



3000	CEBIX	VGSI and RNAV glidepath not coincident (VGSI Angle 3.00/TCH 39).			
* LNAV only		JUROB 2.5 NM to RW35	FARAR 2500	CEGAS 4 NM Holding Pattern	
			1700*	174°	3000
			354°	354°	GP 3.00° TCH 45
			2.5 NM	2.4 NM	6.2 NM
CATEGORY	A	B	C	D	
LPV DA	1129-1	250 (300-1)		NA	
LNAV/VNAV DA	1173-1	294 (300-1)		NA	
LNAV MDA	1300-1	421 (400-1)	1300-1 ¼ 421 (400-1 ¼)	NA	
CIRCLING	1340-1 440 (500-1)	1360-1 460 (500-1)	1360-1 ½ 460 (500-1 ½)	NA	

