

WAAS CH <b>99706</b> <b>W13A</b>	APP CRS <b>128°</b>	Rwy Idg TDZE <b>2587</b> Apt Elev <b>2589</b>
----------------------------------------	------------------------	-----------------------------------------------------

RNAV (GPS) RWY 13

AINSWORTH RGNL (A.N.W)

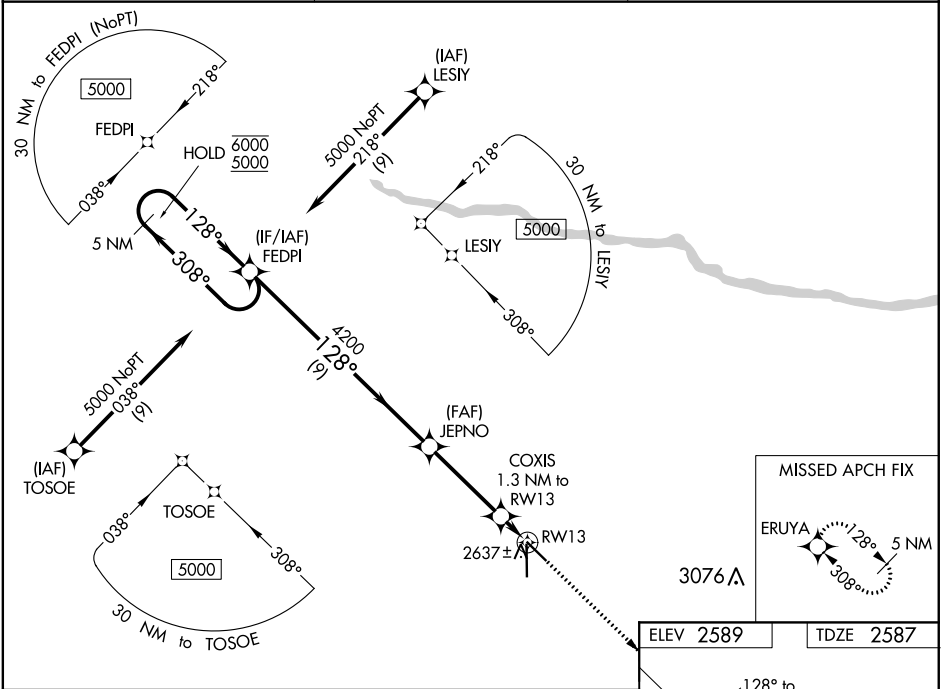
RNP APCH.

⚠

For uncompensated Baro-VNAV systems, LNAV/VNAV NA below -20°C or above 54°C.

MISSED APPROACH: Climb to 5100 direct ERUYA and hold, continue climb-in-hold to 5100.

AWOS-3 <b>118.325</b>	DENVER CENTER <b>127.95 338.2</b>	UNICOM <b>122.8 (CTAF) 1</b>
--------------------------	--------------------------------------	---------------------------------



5 NM Holding Pattern

6000  
5000

←308°  
→128°

GP 3.00°  
TCH 50

FEDPI

JEPNO

COXIS 1.3 NM to RW13

RW13

5100 ERUYA

\*LNAV only

\*0.8 NM to RW13

\*3060

9 NM

3.6 NM

0.5 NM

0.8 NM

CATEGORY	A	B	C	D
LPV DA		2787-1	200 (200-1)	
LNAV/VNAV DA		2837-1	250 (300-1)	
LNAV MDA		2900-1	313 (400-1)	
CIRCLING	3000-1 411 (500-1)	3040-1 451 (500-1)	3040-1½ 451 (500-1½)	3200-2 611 (700-2)

HIRL Rwy 13-31 and 17-35 1

REIL Rwy 31 1