

VORTAC ONL 113.9 Chan 86	APP CRS 125°	Rwy Idg TDZE Apt Elev 4408 2032 2034
--	------------------------	--

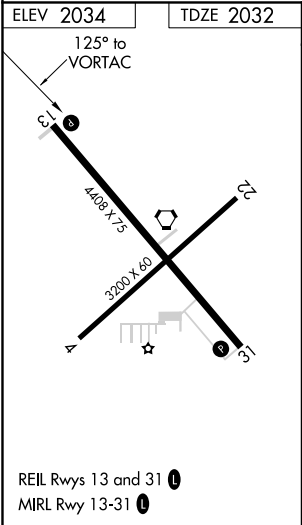
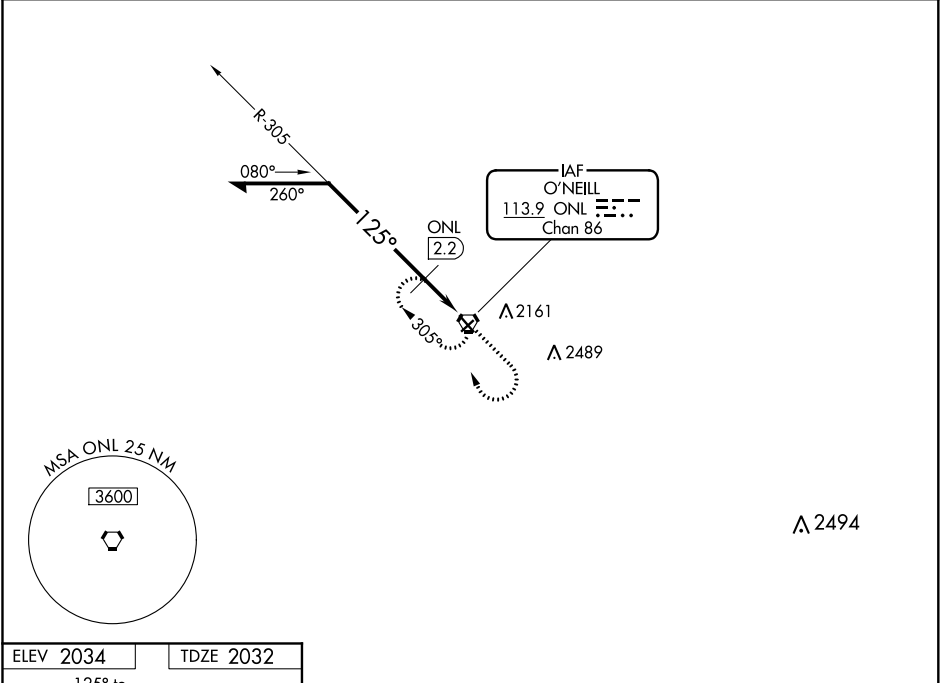
VOR RWY 13

THE O'NEILL MUNI-JOHN L BAKER FIELD (ONL)

Night landing: Rwy 4, 22 NA.

MISSED APPROACH: Climb to 3600 then right turn direct ONL VORTAC and hold.

AWOS-3 121.125	MINNEAPOLIS CENTER 128.0 257.95	UNICOM 122.8 (CTAF) 0
--------------------------	---	--



<div>Remain within 10 NM</div> <div><div><div>3600</div><div>ONL VORTAC</div><div>ONL 2.2</div><div>2500</div><div>305°</div><div>125°</div><div>1.8 NM</div><div>0.4</div></div><div><div>3600</div><div>↑</div><div><div>↷</div><div>ONL</div><div>⬡</div></div></div></div>				
CATEGORY	A	B	C	D
S-13	2500-1	468 (500-1)	2500-1¼ 468 (500-1¼)	2500-1½ 468 (500-1½)
CIRCLING	2600-1	566 (600-1)	2600-1½ 566 (600-1½)	2600-2 566 (600-2)
DME MINIMUMS				
S-13	2420-1 388 (400-1)			2420-1¼ 388 (400-1¼)
CIRCLING	2600-1	566 (600-1)	2600-1½ 566 (600-1½)	2600-2 566 (600-2)