

WAAS CH 86836 W17A	APP CRS 174°	Rwy Idg TDZE 1158 Apt Elev 1160	5506 1158 1160
--	------------------------	---	---

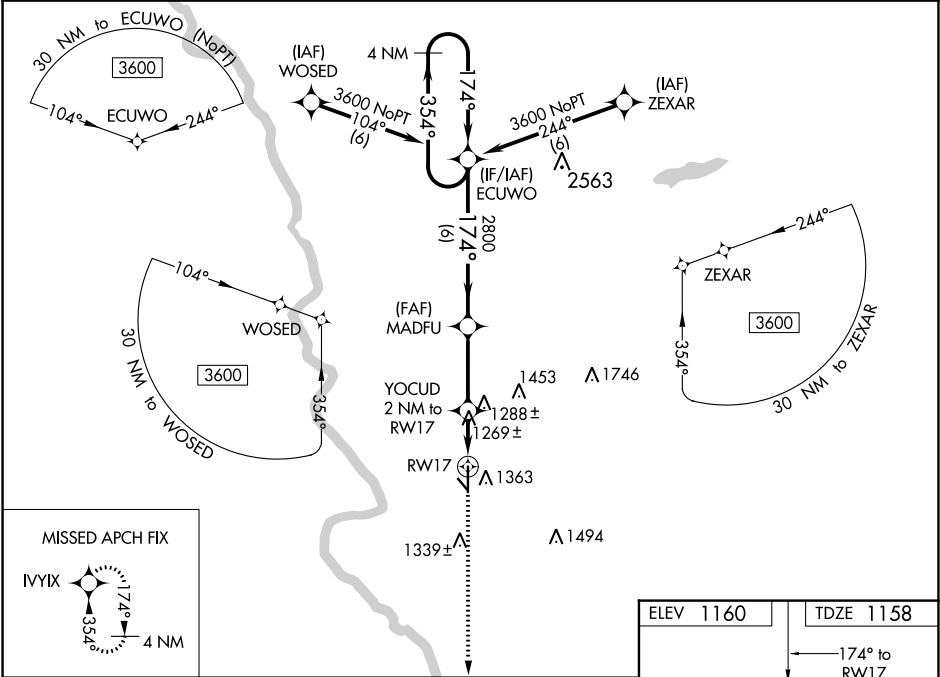
RNAV (GPS) RWY 17

STROTHER FIELD (WLD)

⚠ DME/DME RNP-0.3 NA. For uncompensated Baro-VNAV systems, LNAV/VNAV NA below -15°C (5°F) or above 54°C (130°F). Baro-VNAV and VDP NA when using Wichita Mid-Continent altimeter setting. When local altimeter setting not received, use Wichita Mid-Continent altimeter setting and increase all DA 104 feet and all MDA 120 feet; increase LPV, LNAV/VNAV all Cats and LNAV Cat C visibility ¾ mile; increase Circling Cat C visibility ¼ mile.

MISSED APPROACH:
Climb to 3600 direct
IVYIX and hold.

ASOS 118.025	KANSAS CITY CENTER 127.8 319.1	UNICOM 122.8 (CTAF) 0
------------------------	--	---------------------------------



4 NM Holding Pattern		ECUWO	MADFU	YOCUD 2 NM to RW17	3600	IVYIX
3600 ← 354°		2800	2800	*1 NM to RW17	↑	✦
GP 3.00°				*1820	*LNAV only.	
TCH 40					RW17	
		6 NM	3 NM	1 NM	1 NM	
CATEGORY	A	B	C	D		
LPV DA	1408-7/8		250 (300-7/8)	NA		
LNAV/VNAV DA	1419-7/8		261 (300-7/8)	NA		
LNAV MDA	1520-1		362 (400-1)	NA		
C CIRCLING	1680-1 520 (600-1)		1680-1½ 520 (600-1½)	NA		

