


LOC/DME I-MVP <b>111.55</b> Chan <b>52 (Y)</b>	APP CRS <b>196°</b>	Rwy Idg <b>7301</b> TDZE <b>1320</b> Apt Elev <b>1333</b>
--	------------------------	---

ILS or LOC RWY 19L  
WICHITA DWIGHT D EISENHOWER NATIONAL (ICT)

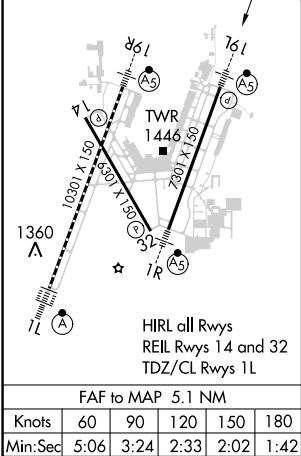
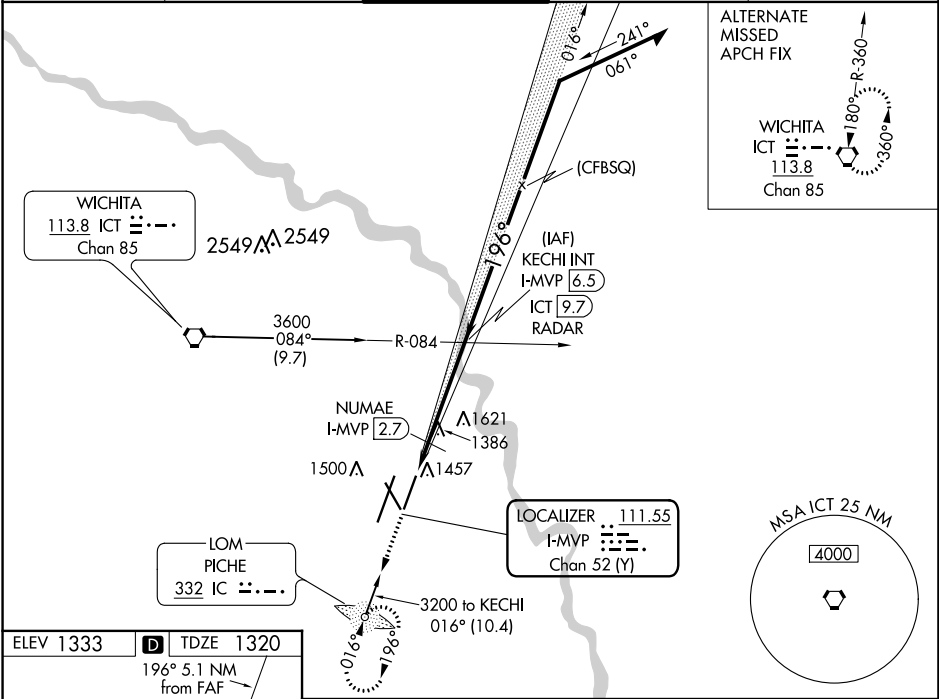
**⚠** ADF required. Simultaneous approach authorized with ILS or LOC RWY 19R. For inoperative MALSR, increase S-ILS 19L Cat E visibility to ¾ mile, S-LOC 19L Cat E visibility to 1 ⅜ mile, NUMAE fix minimums: S-LOC 19L Cat C/D/E visibility to 1 mile.


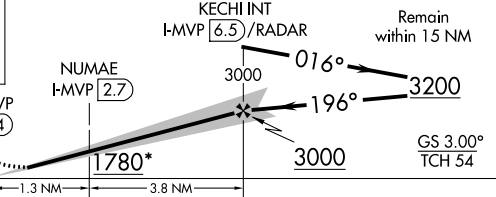


MALSR



MISSED APPROACH: Climb to 3000 direct PICHE LOM and hold.

ATIS <b>125.15</b>	WICHITA APP CON <b>126.7 353.5</b>	WICHITA TOWER <b>118.2 257.8</b>	GND CON <b>121.9 348.6</b>	CLNC DEL <b>125.7</b>
-----------------------	---------------------------------------	-------------------------------------	-------------------------------	--------------------------



3000 ↑ IC 					
CATEGORY	A	B	C	D	E
S-ILS 19L	1520-½ 200 (200-½)				
S-LOC 19L	1780-½ 460 (500-½)		1780-⅞ 460 (500-⅞)		
 CIRCLING	1800-1 467 (500-1)		1980-1¾ 647 (700-1¾)	1980-2 647 (700-2)	2000-2¼ 667 (700-2¼)
NUMAE FIX MINIMUMS (DME REQUIRED)					
S-LOC 19L	1700-½ 380 (400-½)		1700-⅝ 380 (400-⅝)		
 CIRCLING	1800-1 467 (500-1)		1980-1¾ 647 (700-1¾)	1980-2 647 (700-2)	2000-2¼ 667 (700-2¼)

NC-2, 31 DEC 2020 to 28 JAN 2021

NC-2, 31 DEC 2020 to 28 JAN 2021