

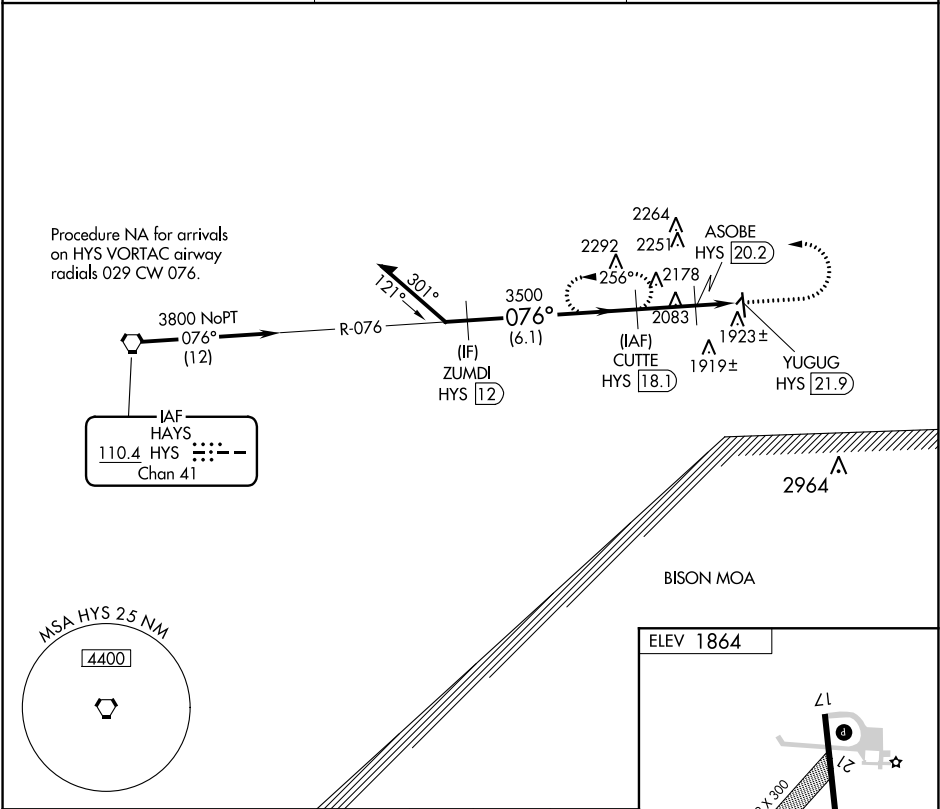
VORTAC HYS <b>110.4</b> Chan <b>41</b>	APP CRS <b>076°</b>	Rwy Idg TDZE Apt Elev <b>1864</b>	<b>N/A</b> <b>N/A</b> <b>1864</b>
--	------------------------	---	---

VOR/DME-A  
RUSSELL MUNI (RSL)

**⚠** When local altimeter setting not received, use Hays altimeter setting and increase all MDA 80 feet. Circling NA to Rwy 3 and 21.

MISSED APPROACH: Climb to 3500 then climbing left turn to 3700 via HYS R-076 to CUTTE/18.1 DME and hold.

ASOS <b>128.325</b>	KANSAS CITY CENTER <b>124.4 322.4</b>	UNICOM <b>122.7 (CTAF) 0</b>
------------------------	--	---------------------------------



Remain within 10 NM

3700 → 256° → CUTTE HYS 18.1

3700 → 076° → 3500 → 2840 → 2.1 NM → 1.7 NM → CUTTE HYS 18.1

ASOBE HYS 20.2

YUGUG HYS 21.9

3500 → 3700 HYS R-076 → CUTTE HYS 18.1

ELEV 1864

1602 X 300

076° 3.8 NM from FAF

5000 X 75

35

1898

CATEGORY	A	B	C	D
CIRCLING	2240-1 376 (400-1)	2320-1¼ 456 (500-1¼)	2320-1½ 456 (500-1½)	NA

REIL Rwy 17 and 35 0

MIRL Rwy 17-35 0

NC-2, 31 DEC 2020 to 28 JAN 2021

NC-2, 31 DEC 2020 to 28 JAN 2021