

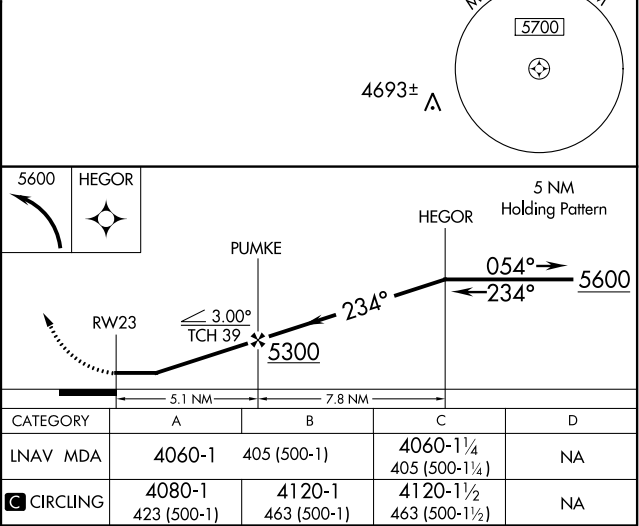
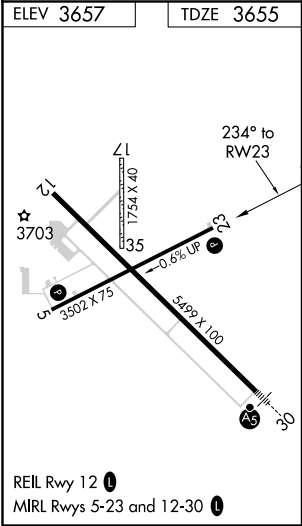
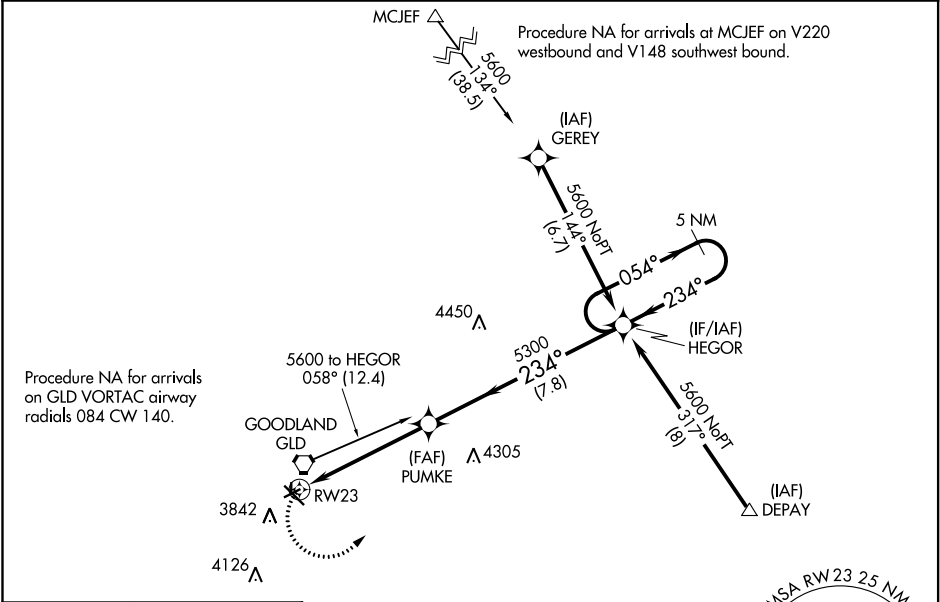
APP CRS	Rwy Idg	3502
234°	TDZE	3655
	Apt Elev	3657

RNAV (GPS) RWY 23
RENNER FIELD/GOODLAND MUNI (GLD)

⚠ Circling NA south of Rwy 5 and 30. DME/DME RNP-0.3 NA. Straight-in Rwy 23 NA at night. VDP NA with Burlington, CO altimeter setting. When local altimeter setting not received, use Burlington, CO altimeter setting and increase all MDA 160 feet. Increase LNAV and Circling Cat C visibility to 1¼ mile. Rwy 23 helicopter visibility reduction below 1 SM NA. Circling Rwy 5, 23 NA at night. Circling NA to Rwy 17 and 35.

MISSED APPROACH:
Climbing left turn to 5600
direct HEGOR and hold.

ASOS 121.025	DENVER CENTER 132.7 226.675	UNICOM 122.8 (CTAF) 0
------------------------	---------------------------------------	---------------------------------



NC-2, 31 DEC 2020 to 28 JAN 2021

NC-2, 31 DEC 2020 to 28 JAN 2021