

WAAS

CH 65838

W12A

APP CRS

125°

Rwy Idg

5499

TDZE

3647

Apt Elev

3657

RNAV (GPS) RWY 12

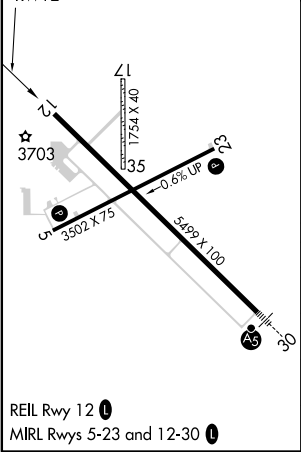
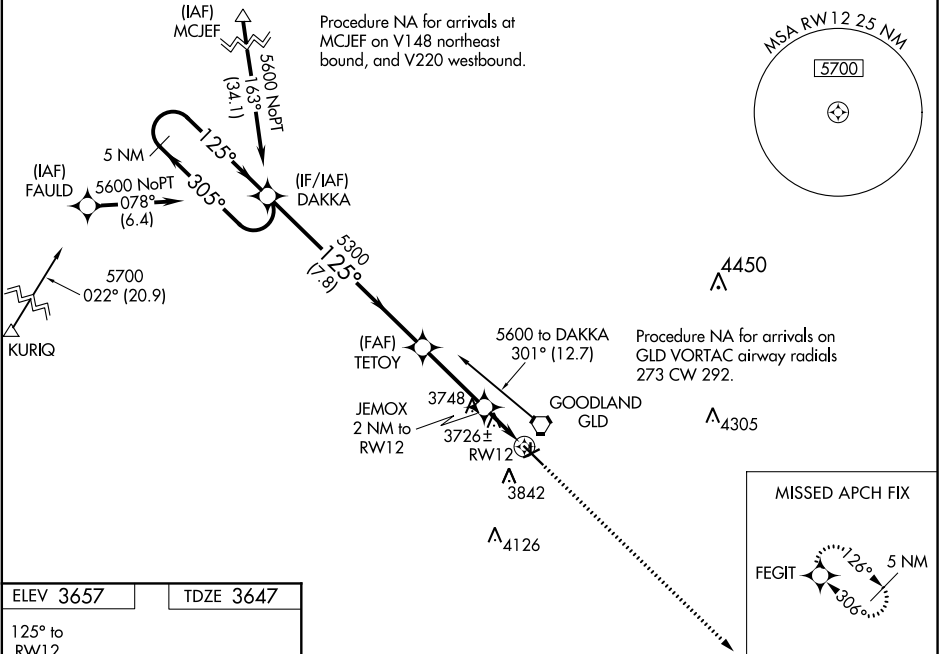
RENNER FIELD/GOODLAND MUNI (GLD)

**⚠** Circling Rwy 5, 23 NA at night. For uncompensated Baro-VNAV systems, procedure NA below -23°C (-9°F) or above 54°C (130°F). Circling NA south of Rwy 5-30. Baro-VNAV and VDP NA when using Burlington, CO altimeter setting. DME/DME RNP-0.3 NA. When local altimeter setting not received, use Burlington, CO altimeter setting and increase LPV DA to 4037 feet and visibility ½ mile, LNAV/VNAV DA to 4037 feet and visibility ½ mile, all MDA 140 feet and LNAV Cats C/D visibility ¾ mile, and Circling Cat C visibility ¼ mile and Cat D ½ mile. Circling NA to Rwy 17 and 35.

MISSED APPROACH:

Climb to 5700 direct FEGIT and hold.

ASOS 121.025	DENVER CENTER 132.7 226.675	UNICOM 122.8 (CTAF) <b>0</b>
-----------------	--------------------------------	---------------------------------



5 NM Holding Pattern				
DAKKA				
TETOY				
JEMOX 2 NM to RW12				
*0.9 NM to RW12				
RW12				
*4320				
GP 3.00° TCH 40				
7.8 NM 3.1 NM 1.1 NM 0.9 NM				
CATEGORY	A	B	C	D
LPV DA	3897-7/8 250 (300-7/8)			
LNAV/VNAV DA	3897-7/8 250 (300-7/8)			
LNAV MDA	3980-1 333 (400-1)			
CIRCLING	4040-1 383 (400-1)	4120-1 463 (500-1)	4120-1½ 463 (500-1½)	4240-2 583 (600-2)