



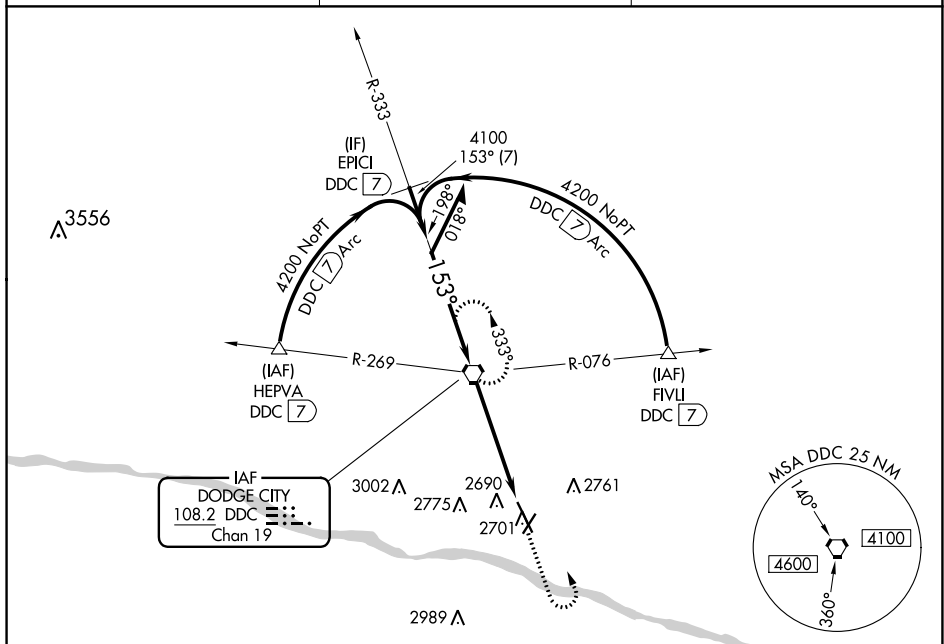


VORTAC DDC <b>108.2</b> Chan <b>19</b>	APP CRS <b>153°</b>	Rwy Idg TDZE Apt Elev	<b>6329</b> <b>2586</b> <b>2596</b>
--	------------------------	-----------------------------	---

VOR RWY 14  
DODGE CITY RGNL (DDC)

  -20°C		MALSR 		MISSED APPROACH: Climb to 4200 then left turn direct DDC VORTAC and hold.	
ASOS <b>118.525</b>		KANSAS CITY CENTER <b>125.2 269.4</b>		UNICOM <b>122.7 (CTAF)</b> 	



Remain within 10 NM

DDC VORTAC

4200

333°

153°

4100

2.84° TCH 37

3.7 NM

1.2 NM

DDC 4200

DDC 3.7

DDC 4.9

VGSI and descent angles not coincident (VGSI Angle 3.00/TCH 55).

CATEGORY	A	B	C	D
S-14	3000- $\frac{1}{2}$ 414 (500- $\frac{1}{2}$ )		3000- $\frac{3}{4}$ 414 (500- $\frac{3}{4}$ )	3000-1 414 (500-1)
<b>C</b> CIRCLING	3040-1 444 (500-1)	3080-1 484 (500-1)	3320-2 724 (800-2)	3320-2 $\frac{1}{4}$ 724 (800-2 $\frac{1}{4}$ )