

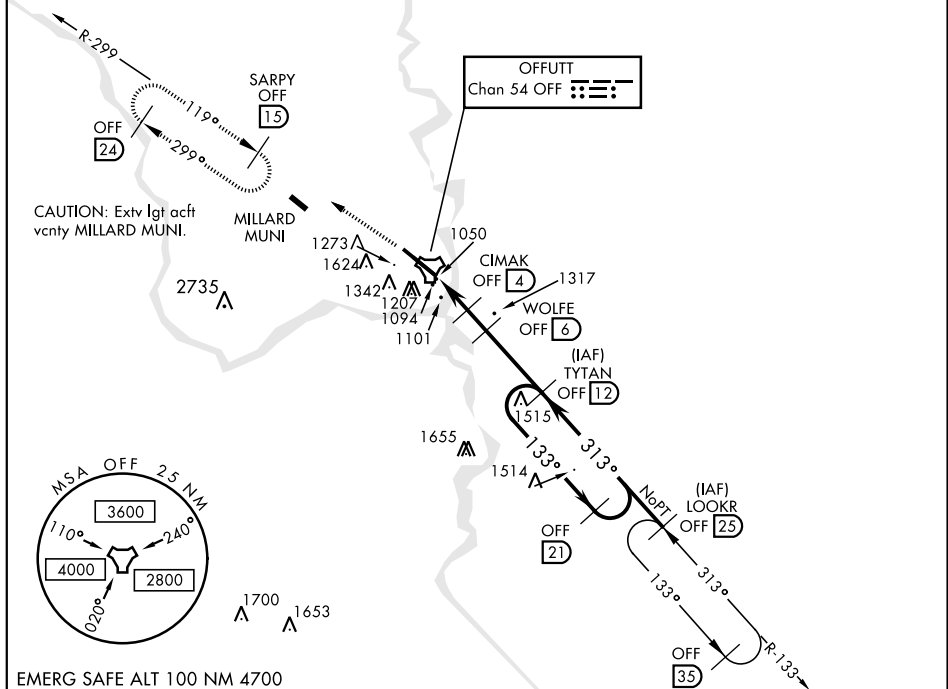


TACAN Y RWY 30

TACAN OFF Chan <b>54</b>	APCH CRS <b>313°</b>	Rwy Idg <b>10,612</b> TDZE <b>985</b> Arprt Elev <b>1049</b>	AL-544 [USAF]	OFFUTT AFB (KOFF)
<div> <div>  </div> <div> <p>* When ALS inop, increase CAT ABCDE RVR to 55 and vis to 1 mile.</p> <p>** Circling not authorized N of Rwy 12-30.</p> </div> </div>			<div> <div>  </div> <div> <p>ALS-1</p> </div> </div>	<p>MISSED APPROACH: Climb to 3000 via OFF TACAN R-299 to SARPY and hold.</p>
<p>ATIS</p> <p><b>126.025 273.5</b></p>		<p>OMAHA APP CON</p> <p><b>E 124.5 263.0</b></p> <p><b>W 120.1 354.05</b></p>	<p>OFFUTT TOWER</p> <p><b>123.7 279.625</b></p>	<p>GND CON</p> <p><b>121.7 289.4</b></p>

**CAUTION:** When Rwy 12 VGSi inop, circling to Rwy 12 not authorized at night.



EMERG SAFE ALT 100 NM 4700

