

OMAHA, NEBRASKA

## RNAV (GPS) RWY 12

WAAS CH 91358 W12A	APCH CRS 124°	Rwy Idg 10,696 TDZE 1049 Arpt Elev 1049
--------------------------	------------------	---

AL-544 (USAF)

OFFUTT AFB (KOFF)

**T** \* When ALS inop, increase all CAT vis to 1 3/8 miles.  
 \*\* When ALS inop, increase CAT AB RVR to 55, CDE vis to 1 1/2 miles.  
 \*\*\* Circling not authorized N of Rwy 12-30.



**MISSED APPROACH:** Climb direct to WONSI, then track 124° to SLPRS and hold, maintain 3000.

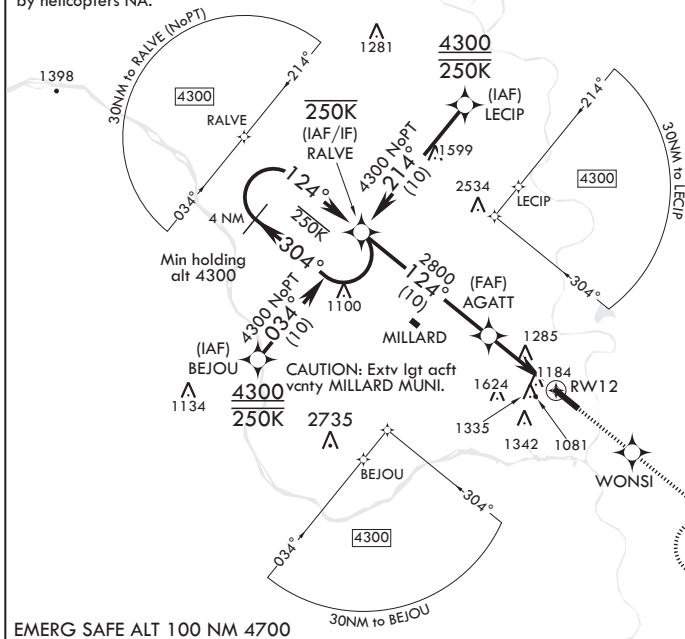
ATIS 126.025 273.5	OMAHA APP CON/DEP CON 120.1 354.05 W 124.5 263.0 E	TOWER 123.7 279.625	GND CON 121.7 289.4
-----------------------	--	------------------------	------------------------

**CAUTION:** When VGSI inop, procedure NA at night.

### Visibility reduction by helicopters NA.

DME/DME RNP-0.3 N/A

Baro-VNAV NA  
below -17°C (2°F).

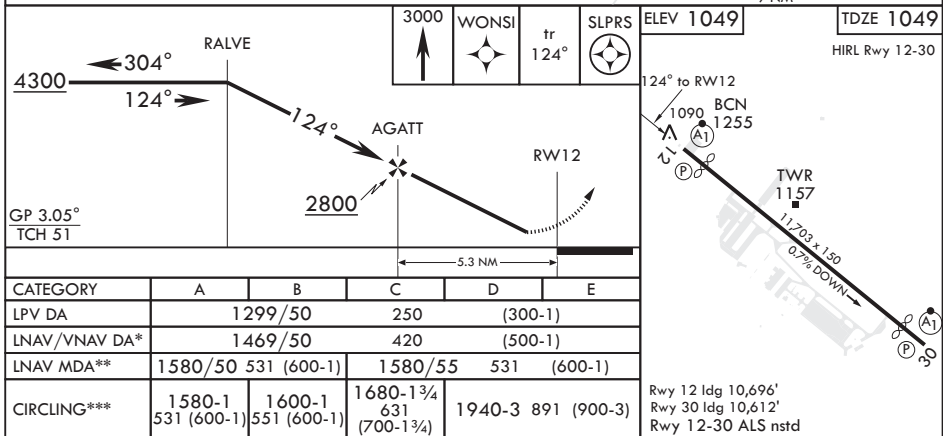


CAUTION: Terrain 1038 ft MSL to 1050 ft MSL, beginning 203 ft prior to threshold, 130 ft to 411 ft left and 5 ft to 267 ft right of course; Possible vehicles, 15 ft AGL, 1043 ft MSL, 271 ft to 335 ft prior to threshold, 414 ft to 418 ft right of course; Fence, 8 ft AGL, 1040 ft MSL, 246 ft prior to threshold, 401 ft right of course.

**CAUTION: USAF ONLY:**  
When VGSI inop, straight-in  
Rwy 12 authorized at night  
with MAJCOM A3 approval.

Max holding  
alt 6000  
Min holding  
alt 3000

EMERG SAFE ALT 100 NM 4700



OMAHA, NEBRASKA

41°07'N - 95°55'W

OFFUTT AFB (KOFF)

Amdt 2 19JUL18

## RNAV (GPS) RWY 12