

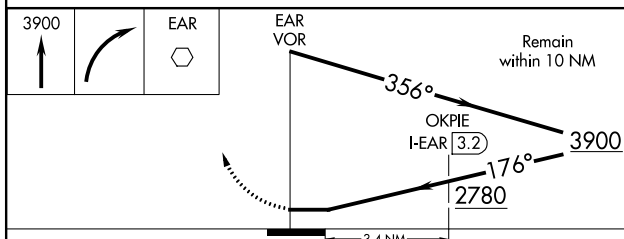
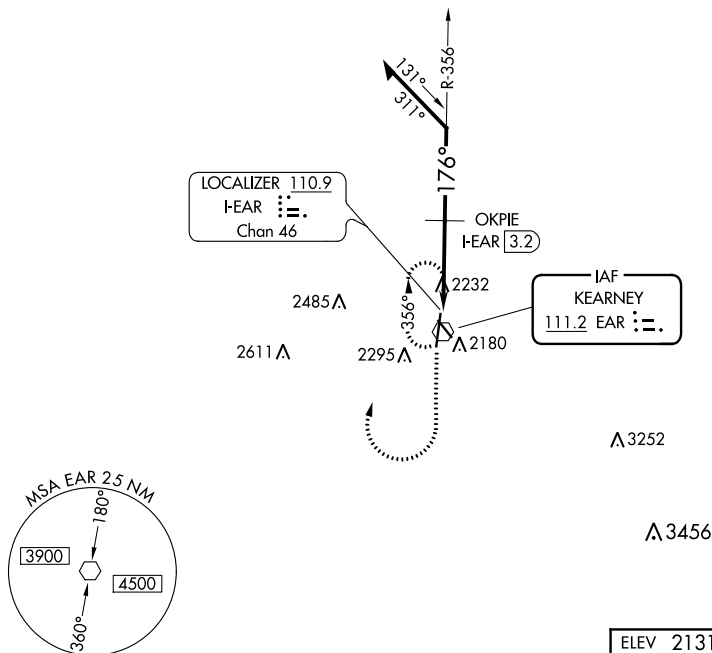
VOR EAR <u>111.2</u>	APP CRS 176°	Rwy Idg TDZE Apt Elev	7094 2130 2131
--------------------------------	------------------------	-----------------------------	---


VOR RWY 18
KEARNEY RGNL (EAR)



MISSED APPROACH: Climb to 3900 then right turn direct EAR VOR and hold.

AWOS-3PT 123.875	MINNEAPOLIS CENTER 119.4 278.8	UNICOM 123.0 (CTAF) 0
----------------------------	--	---------------------------------



CATEGORY	A	B	C	D
S-18	2780-1	650 (700-1)	2780-1 $\frac{3}{4}$ 650 (700-1 $\frac{3}{4}$)	2780-1 $\frac{1}{2}$ 650 (700-1 $\frac{1}{2}$)
CIRCLING	2780-1	649 (700-1)	2780-1 $\frac{3}{4}$ 649 (700-1 $\frac{3}{4}$)	2840-2 $\frac{1}{4}$ 709 (800-2 $\frac{1}{4}$)
OKPIE FIX MINIMUMS				
S-18	2660-1	530 (600-1)	2660-1 $\frac{1}{2}$	530 (600-1 $\frac{1}{2}$)
 CIRCLING	2660-1	529 (600-1)	2660-1 $\frac{1}{2}$ 529 (600-1 $\frac{1}{2}$)	2840-2 $\frac{1}{4}$ 709 (800-2 $\frac{1}{4}$)

