

WAAS CH 69523 W30A	APP CRS 298°	Rwy Idg TDZE Apt Elev	4400 3290 3298
--	------------------------	-----------------------------	---

RNAV (GPS) RWY 30

CHADRON MUNI (CDR)

▼

▲

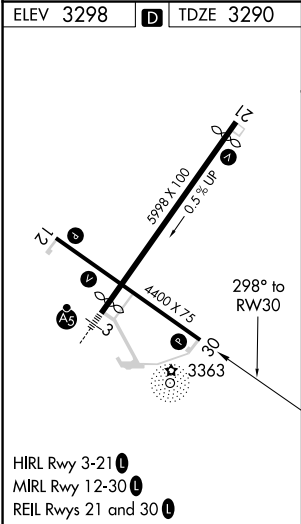
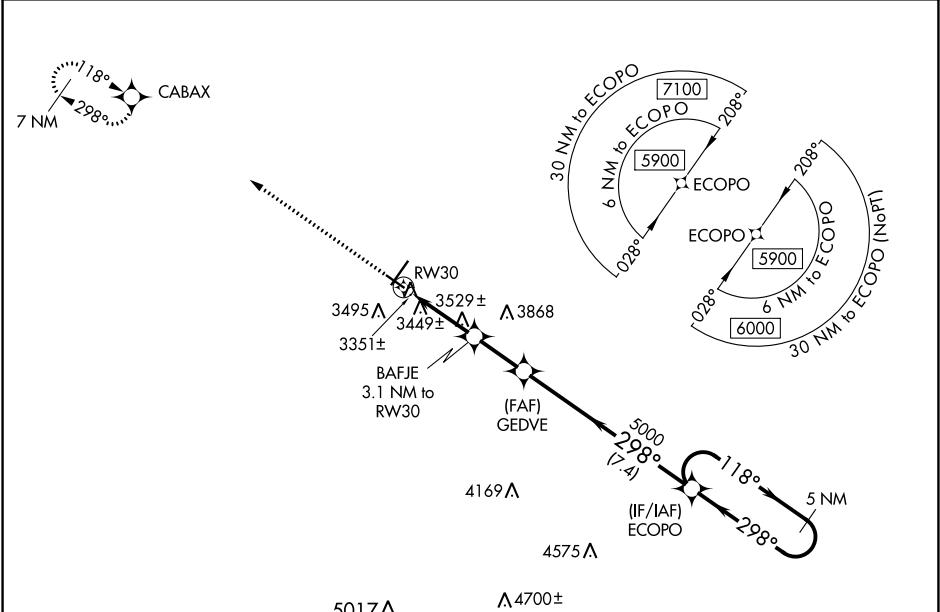
33

-32°C

For uncompensated Baro-VNAV systems, LNAV/VNAV NA below -21°C (-5°F) or above 54°C (130°F). DME/DME RNP-0.3 NA. When local altimeter setting not received, use Pine Ridge altimeter setting and increase all DA 70 feet and all MDA 80 feet; increase LPV all Cats visibility 1⁄8 mile, LNAV/VNAV all Cats visibility 1⁄4 mile, and LNAV and Circling Cat C visibility 1⁄4 mile. Baro-VNAV and VDP NA with Pine Ridge altimeter setting.

MISSED APPROACH:
Climb to 6300 direct CABAX and hold.

ASOS 118.05	DENVER CENTER 127.95 338.2	UNICOM 122.8 (CTAF) 0
-----------------------	--------------------------------------	---------------------------------



6300 ↑ CABAX ✧					5 NM Holding Pattern				
* LNAV only					ECOPO				
BAFJE 3.1 NM to RW30					GEDVE 5000				
* 1.4 NM to RW30					118° → 5900 ← 298°				
RW30					298°				
4300*					5000				
1.4 NM					7.4 NM				
1.7 NM					2.2 NM				
GP 3.00° TCH 40									
CATEGORY		A		B		C		D	
LPV	DA	3540-1 250 (300-1)				NA			
LNAV/ VNAV	DA	3767-1½ 477 (500-1½)				NA			
LNAV	MDA	3780-1 490 (500-1)		3780-1⅜ 490 (500-1½)		NA			
CIRCLING		3820-1 522 (600-1)		3920-1¾ 622 (700-1¾)		NA			