

WAAS CH <b>90523</b> <b>W21A</b>	APP CRS <b>208°</b>	Rwy Idg TDZE Apt Elev	<b>5500</b> <b>3286</b> <b>3298</b>
--	------------------------	-----------------------------	---

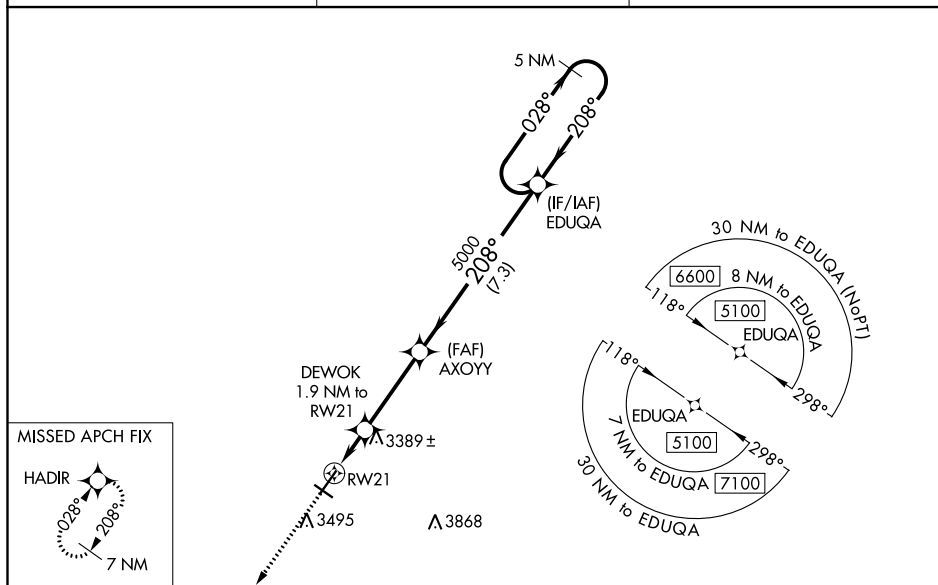
RNAV (GPS) RWY 21  
CHADRON MUNI (CDR)

**T**  
**A**  
**-32°C**

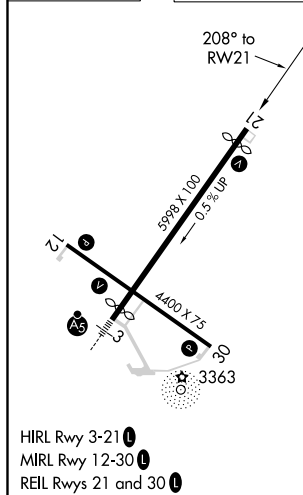
Baro-VNAV NA when using Pine Ridge altimeter setting. For uncompensated Baro-VNAV systems, LNAV/VNAV NA below -21°C (-5°F) or above 23°C (73°F), DME/DME RNP-0.3 NA. VDP NA with Pine Ridge altimeter setting. When local altimeter setting not received, use Pine Ridge altimeter setting and increase all DA 70 feet and all MDA 80 feet; increase LPV and LNAV/VNAV all Cats visibility ¼ mile, LNAV Cats C and D visibility ⅓ mile and Circling Cats C and D visibility ¼ mile.

**MISSED APPROACH:** Climb to 7500 direct HADIR and hold, continue climb-in-hold to 7500.

ASOS <b>118.05</b>	DENVER CENTER <b>127.95 338.2</b>	UNICOM <b>122.8</b> (CTAF) <b>0</b>
-----------------------	--------------------------------------	--



ELEV 3298	<b>D</b>	TDZE 3286
-----------	----------	-----------

[illegible]