

VORTAC LBL <b><u>112.3</u></b> Chan <b>70</b>	APP CRS <b>196°</b>	Rwy Idg <b>7101</b> TDZE <b>2877</b> Apt Elev <b>2886</b>
---	------------------------	---

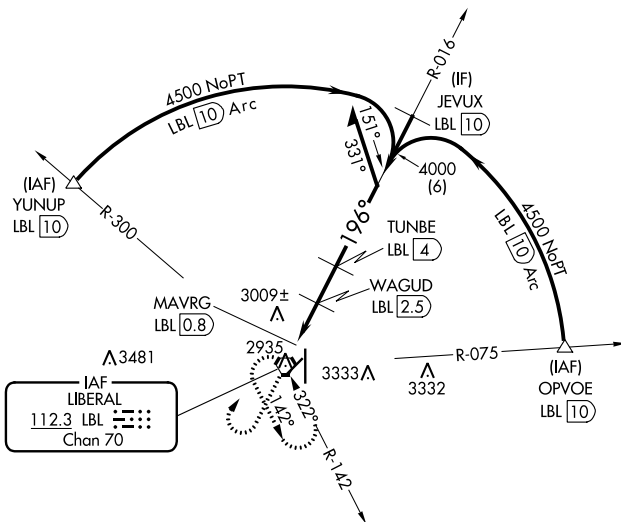
VOR/DME RWY 17  
LIBERAL MID-AMERICA RGNL (LBL)

LIBERAL MID-AMERICA RGNL (LBL)

**T** Circling NA east of Rwy 17-35. When local altimeter setting not received, use  
**A** Guymon altimeter setting and increase all MDA 120 feet, increase Circling Cat D  
visibility  $\frac{1}{4}$  SM. Visibility reduction by helicopters NA. VDP NA when using  
Guymon Muni altimeter setting.

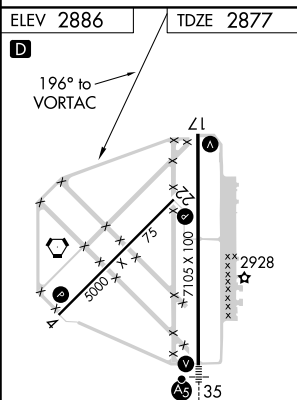
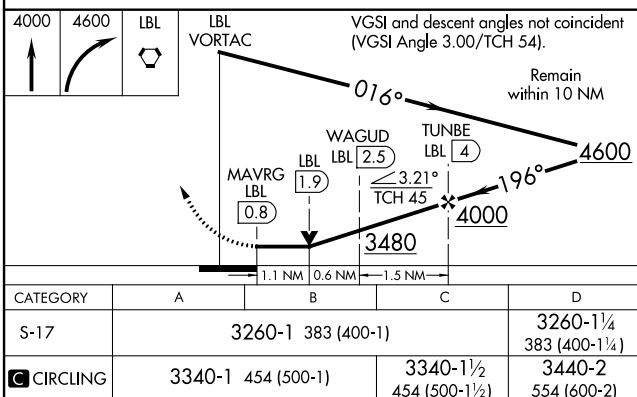
**MISSED APPROACH:** Climb to 4000 then climbing right turn to 4600 direct LBL VORTAC and hold.

AWOS-3PT <b>118.375</b>	KANSAS CITY CENTER <b>134.0 257.865</b>	UNICOM <b>122.8 (CTAF) ①</b>
----------------------------	--	---------------------------------



MSA LBL 25 NM

4700

MIRL Rwy 4-22 **L**HIRL Rwy 17-35 **L**REIL Rwy 4, 17 and 22 **L**

LIBERAL, KANSAS

Amdt 4A 23APR20

37°03'N-100°58'W

LIBERAL MID-AMERICA RGNL (LBL)

VOR/DME RWY 17