

WAAS CH 90405 W22A	APP CRS 219°	Rwy Idg TDZE 2880 Apt Elev 2886
--	------------------------	---

RNAV (GPS) RWY 22

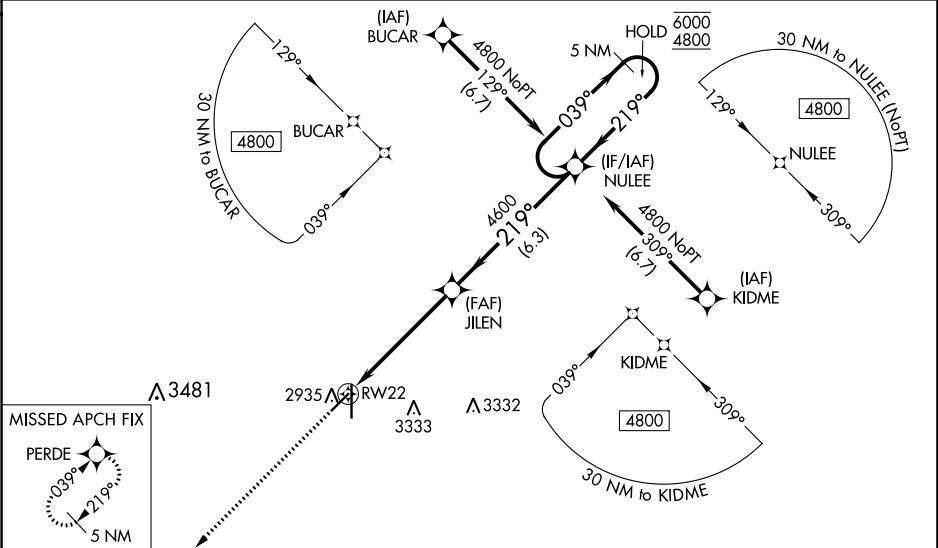
LIBERAL MID-AMERICA RGNL (L.B.L.)

RNP APCH.

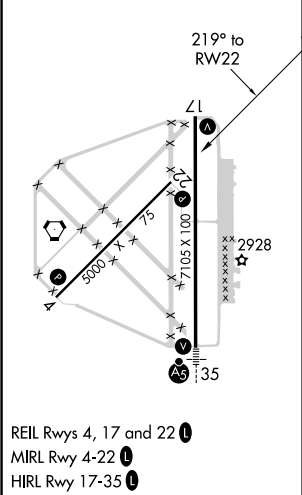
Circling NA east of Rwy 17-35. Baro-VNAV NA when using Guymon Muni altimeter setting. For uncompensated Baro-VNAV systems, LNAV/VNAV NA below -20°C or above 54°C. VDP NA when using Guymon Muni altimeter setting. When local altimeter setting not received, use Guymon Muni altimeter setting: increase all DA 112 feet and all MDA 120 feet. Increase LPV all Cats visibilities ¼ SM; increase LNAV/VNAV all Cats visibility ⅓ SM; increase LNAV Cats C and D visibility ⅓ SM; Circling Cat C and D visibility ¼ SM.

MISSED APPROACH: Climb to 4800 direct PERDE and hold.

AWOS-3PT 118.375	KANSAS CITY CENTER 134.0 257.865	UNICOM 122.8 (CTAF) 0
----------------------------	--	---------------------------------



ELEV 2886	D	TDZE 2880
-----------	----------	-----------



<div>4800 PERDE</div> <div>*LNAV only.</div> <div>*1.4 NM to RW22</div> <div>RW22</div> <div>1.4 NM 3.9 NM 6.3 NM</div> <div>NULEE</div> <div>5 NM Holding Pattern</div> <div>039° 6000 219° 4800</div> <div>GP 3.00° TCH 40</div>				
CATEGORY	A	B	C	D
LPV DA	3080-¾ 200 (200-¾)			
LNAV/VNAV DA	3168-⅞ 288 (300-⅞)			
LNAV MDA	3360-1	480 (500-1)	3360-1⅓ 480 (500-1⅓)	
C CIRCLING	3360-1 474 (500-1)	3360-1⅓ 474 (500-1⅓)	3360-1½ 474 (500-1½)	3440-2 554 (600-2)