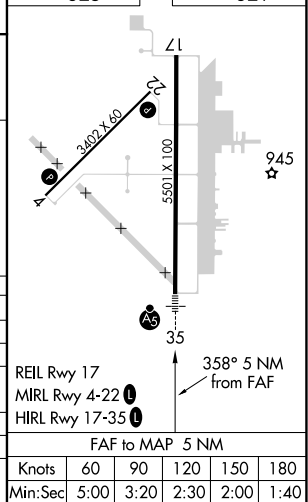
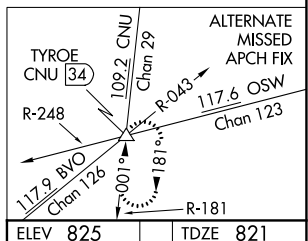
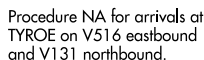




ILS or LOC RWY 35

MISSED APPROACH: Climb to 1500 then climbing left turn to 3000 on heading 135° to intercept I-10 LOC S course to VOVRY INT and hold.

EUREKA LOW MOA

CATEGORY	A	B	C	D
S-LS 35		1021-1/2	200 (200-1/4)	
S-LOC 35	1380-1/2	559 (600-1/2)	1380-11/8	559 (600-11/8)
 CIRCLING	1380-1	555 (600-1)	1380-15/8 555 (600-15/8)	1680-23/4 855 (900-23/4)
ZOVID FIX MINIMUMS				
S-LOC 35		1120-1/2	299 (300-1/2)	
 CIRCLING	1280-1	455 (500-1)	1340-11/2 515 (600-11/2)	1680-23/4 855 (900-23/4)

NC-2, 31 DEC 2020 to 28 JAN 2021