

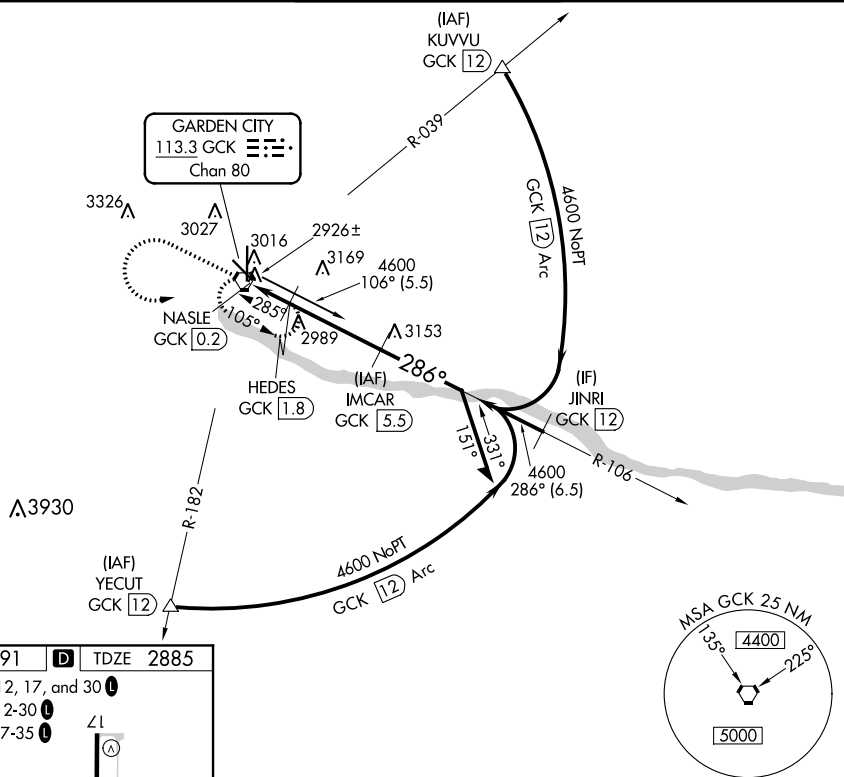
VORTAC GCK <b>113.3</b> Chan 80	APP CRS <b>286°</b>	Rwy Idg <b>5700</b> TDZE <b>2885</b> Apt Elev <b>2891</b>
---------------------------------------	------------------------	---

VOR/DME RWY 30  
GARDEN CITY RGNL (GCK)

**T** When local altimeter setting not received, use Dodge City Rgnl altimeter setting and increase all MDA 140 feet and Circling Cat C visibility  $\frac{1}{2}$  SM and Circling Cat D visibility  $\frac{1}{4}$  SM.

**MISSED APPROACH:**  
Climb to 4000 then climbing left turn to 4600 direct GCK VORTAC and hold.

ASOS 121.325	KANSAS CITY CENTER 125.2 269.4	GARDEN CITY TOWER ★ 118.15 (CTAF) 0 254.4	GND CON 119.0 254.4	UNICOM 122.95
-----------------	-----------------------------------	--	------------------------	------------------



ELEV 2891 D TDZE 2885

REIL Rwy 12, 17, and 30 L

MIRL Rwy 12-30 L

HIRL Rwy 17-35 L

7299 X 100

5700 X 100

35

286° 5.3 NM from FAF

Diagram illustrating a circling approach for a runway. Key elements include:

- Runway dimensions: 4000 ft and 4600 ft.
- Approach path angles: 106° and 286°.
- Distances: 3440 ft, 1.6 NM, 3.7 NM.
- Altitudes/Gradients: 1.8, 0.2, 2.99%, TCH 45'.
- Labels: GCR, HEDES, NASLE, IMCAR, GCR, 4600, 3240-1, 355 (400-1), 3240-1¼, 355 (400-1¼), 3240-2, 589 (600-2).