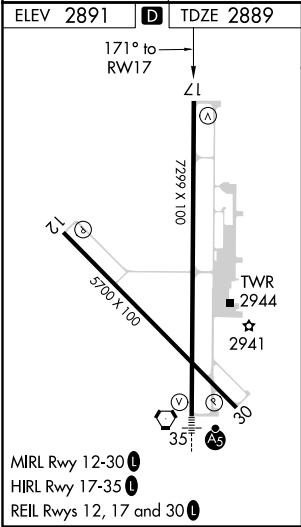
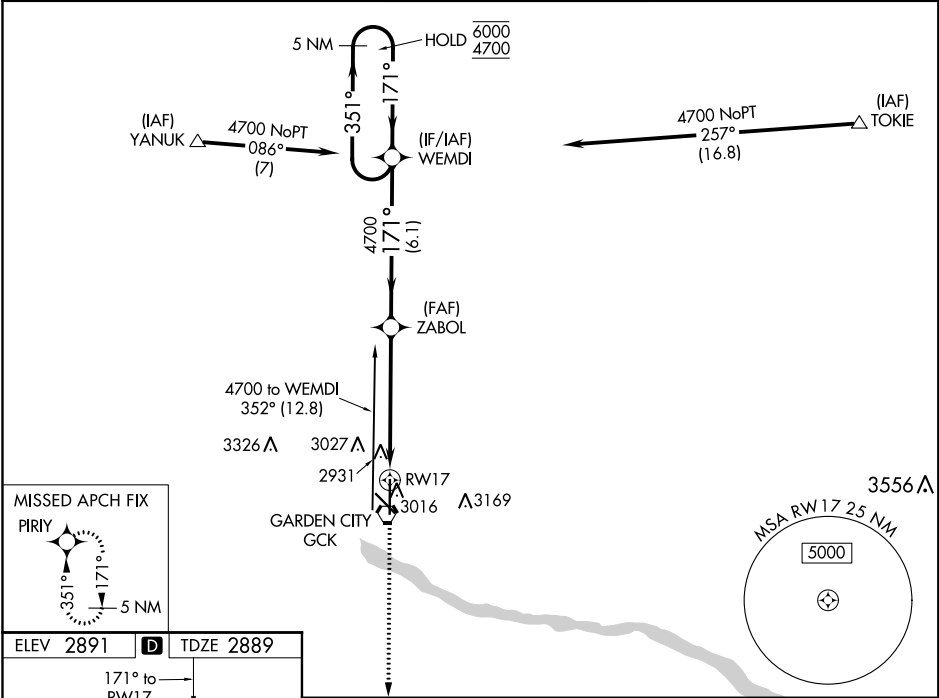


WAAS CH <b>42803</b> <b>W17A</b>	APP CRS <b>171°</b>	Rwy Idg <b>7299</b> TDZE <b>2889</b> Apt Elev <b>2891</b>
--	------------------------	---

RNAV (GPS) RWY 17  
GARDEN CITY RGNL (GCK)

RNP APCH. ▼ For uncompensated Baro-VNAV systems, LNAV/VNAV ▲ NA below -20°C or above 43°C.		MISSED APPROACH: Climb to 4800 direct PIRY and hold.		
ASOS <b>121.325</b>	KANSAS CITY CENTER <b>125.2 269.4</b>	GARDEN CITY TOWER* <b>118.15 (CTAF) 0 254.4</b>	GND CON <b>119.0 254.4</b>	UNICOM <b>122.95</b>



ELEV 2891 <b>D</b> TDZE 2889		5 NM Holding Pattern			
*LNAV only		*0.9 NM to RWY 17			
CATEGORY		A	B	C	D
LPV DA		3139-1 250 (300-1)			
LNAV/VNAV DA		3217-1¼ 328 (400-1¼)			
LNAV MDA		3220-1 331 (400-1)			
<b>C</b> CIRCLING		3320-1 429 (500-1)	3360-1 469 (500-1)	3480-1½ 589 (600-1½)	3480-2 589 (600-2)

NC-2, 31 DEC 2020 to 28 JAN 2021

NC-2, 31 DEC 2020 to 28 JAN 2021