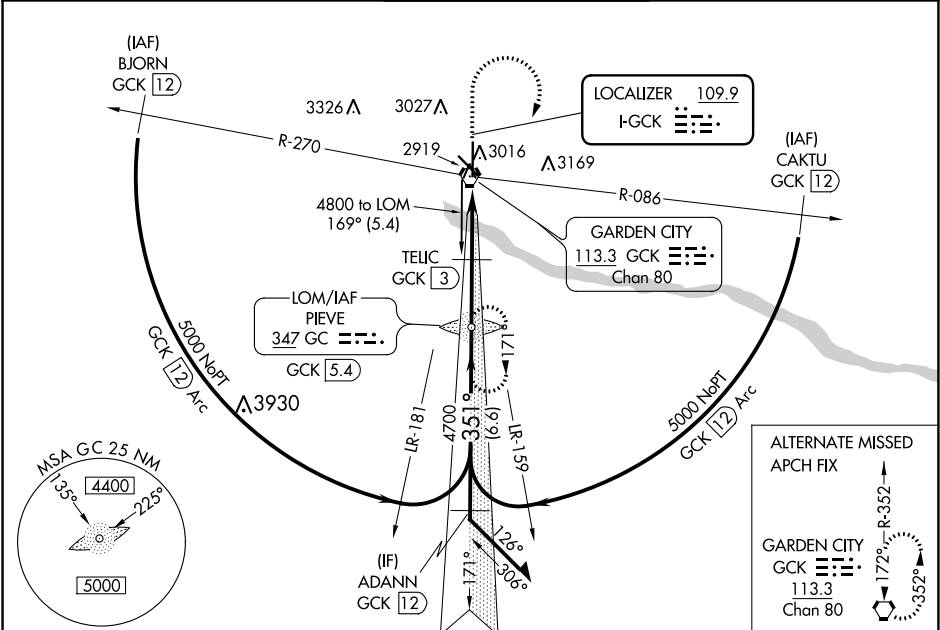


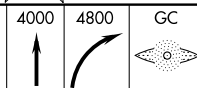
LOC I-GCK 109.9	APP CRS 351°	Rwy Idg TDZE Apt Elev	7299 2885 2891
---------------------------	------------------------	-----------------------------	---

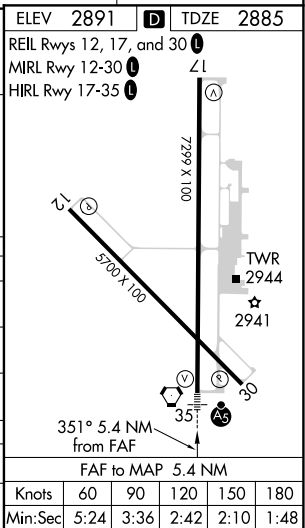
ILS or LOC RWY 35
GARDEN CITY RGNL (GCK)

ADF required.	MALSR	MISSED APPROACH: Climb to 4000 then climbing right turn to 4800 direct PIEVE LOM/GCK 5.4 DME and hold.
For inop ALS, increase TELIC fix minimums S-LOC 35 Cat C/D visibility to ½ SM.		

ASOS 121.325	KANSAS CITY CENTER 125.2 269.4	GARDEN CITY TOWER* 118.15 (CTAF) 0 254.4	GND CON 119.0 254.4	UNICOM 122.95
------------------------	--	--	-------------------------------	-------------------------



VGSI and ILS glidepath not coincident (VGSI Angle 3.00/TCH 41).						



NC-2, 31 DEC 2020 to 28 JAN 2021

NC-2, 31 DEC 2020 to 28 JAN 2021