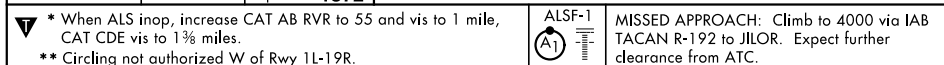


TACAN IAB Chan <b>112</b>	APCH CRS <b>192°</b>	Rwy Idg <b>12,007</b> TDZE <b>1365</b> Arpt Elev <b>1372</b>
------------------------------	-------------------------	--

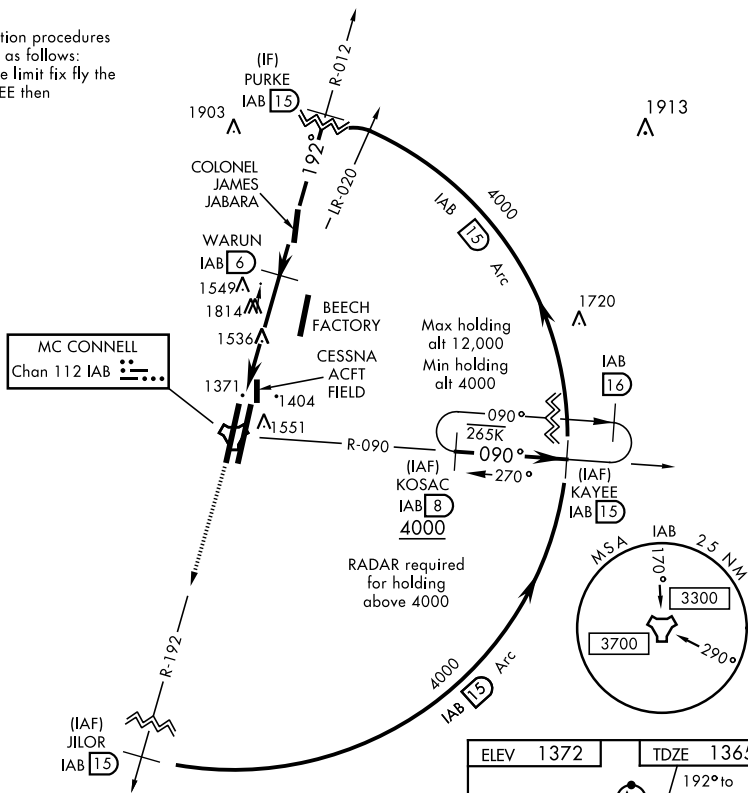
AL-453 [USAF]

MC CONNELL AFB (KIAB)

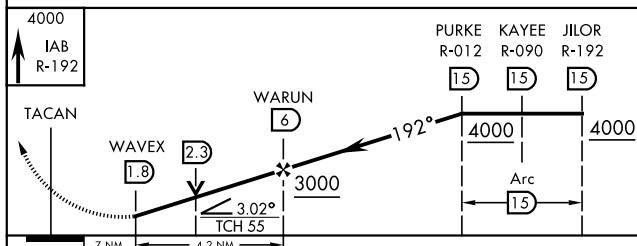


D-ATIS 124.65 269.9	WICHITA APP CON 134.8 269.1	MC CONNELL TOWER 127.25 291.775	GND CON 118.0 275.8
------------------------	--------------------------------	------------------------------------	------------------------

ATC lost communication procedures on missed approach as follows:  
At 15 DME clearance limit fix fly the 15 DME Arc to KAYEE then KOSAC and hold.



EMERG SAFE ALT 100 NM 4200



CATEGORY	A	B	C	D	E
S-19L *	1820/40 455 (500-¾)		1820/45 455 (500-⅞)		
<b>C</b> CIRCLING **	1900-1 528 (600-1)		1900-1½ 528 (600-1½)	2400-3	1028 (1100-3)

WICHITA, KANSAS  
Amdt 6 10SEP20

37°37'N-97°16'W

MC CONNELL AFB (KIAB)

TACAN RWY 19L

NC-2, 31 DEC 2020 to 28 JAN 2021

NC-2, 31 DEC 2020 to 28 JAN 2021