

WICHITA, KANSAS

RNAV (GPS) RWY 1L

WAAS CH 71272 W01A	APCH CRS 008°	Rwy ldg TDZE Arpt Elev	12,000 1347 1372
--------------------------	------------------	------------------------------	------------------------

AL-453 (USAF)

MC CONNELL AFB (KIAB)

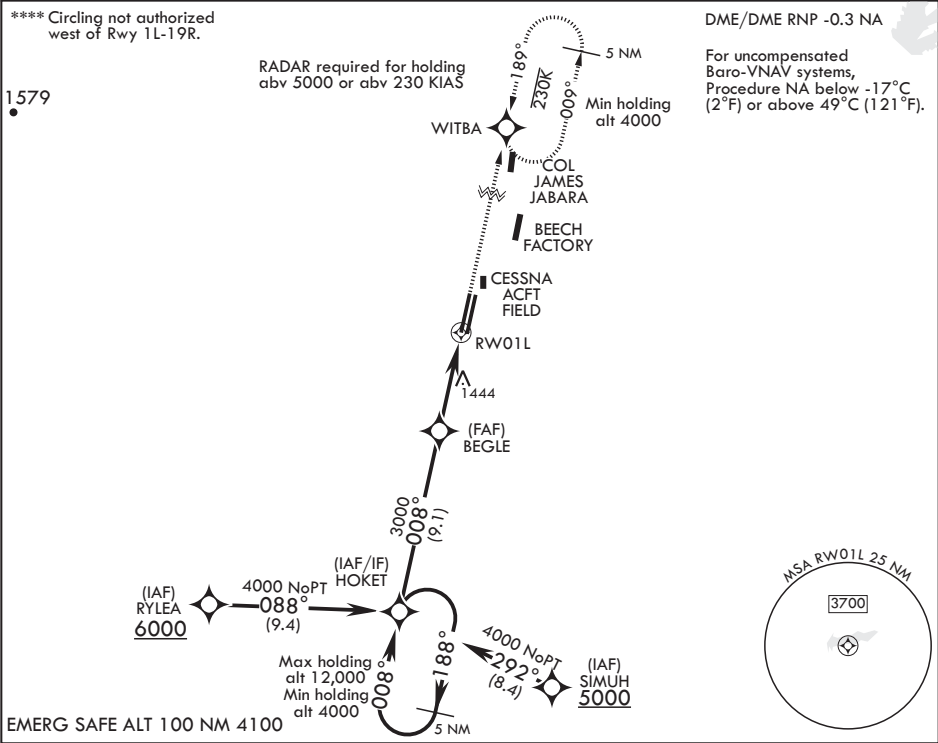
⚠ * When ALS inop, increase RVR to 40, vis to 3/4 mile.
** When ALS inop, increase vis to 1 1/4 miles.
*** When ALS inop, increase CAT AB RVR to 55, vis to 1 mile;
CAT CDE RVR to 60, vis to 1 1/8 miles.

ALS-1



MISSED APPROACH: Climb to 4000 direct WITBA and hold.

D ATIS 124.65 269.9	WICHITA APP CON 134.8 269.1	TOWER 127.25 291.775	GND CON 118.0 275.8
------------------------	--------------------------------	-------------------------	------------------------



4000

188°

008°

HOKET

008°

BEGLE

3000

1.1 NM to RW01L

5 NM

RW01L

GP 3.05°
TCH 56

4000

WITBA

ELEV 1372

TDZE 1347

008° to RW01L

HIRL all Rws

CATEGORY	A	B	C	D	E
LPV DA*	1547/24		200	(200-½)	
LNAV/VNAV DA**	1732/40		385	(400-¾)	
LNAV MDA***	1740/24 393 (400-½)		1740/35 393 (400-¾)		
C CIRCLING****	1900-1 528 (600-1)		1900-1½ 528 (600-1½)	2400-3 1028 (1100-3)	

WICHITA, KANSAS

37°37'N - 97°16'W

MC CONNELL AFB (KIAB)

Amdt 3 10SEP20

RNAV (GPS) RWY 1L

NC-2, 31 DEC 2020 to 28 JAN 2021

NC-2, 31 DEC 2020 to 28 JAN 2021