

ILS or LOC RWY 19R

LOC I-CWX 109.9	APCH CRS 188°	Rwy Idg 19R 12,000 19L 12,007 TDZE 19R 1372 19L 1365 Arpt Elev 1372
---------------------------	-------------------------	--

AL-453 [USAF]

MC CONNELL AFB (KIAB)

RADAR or DME Required.

ALSF-1

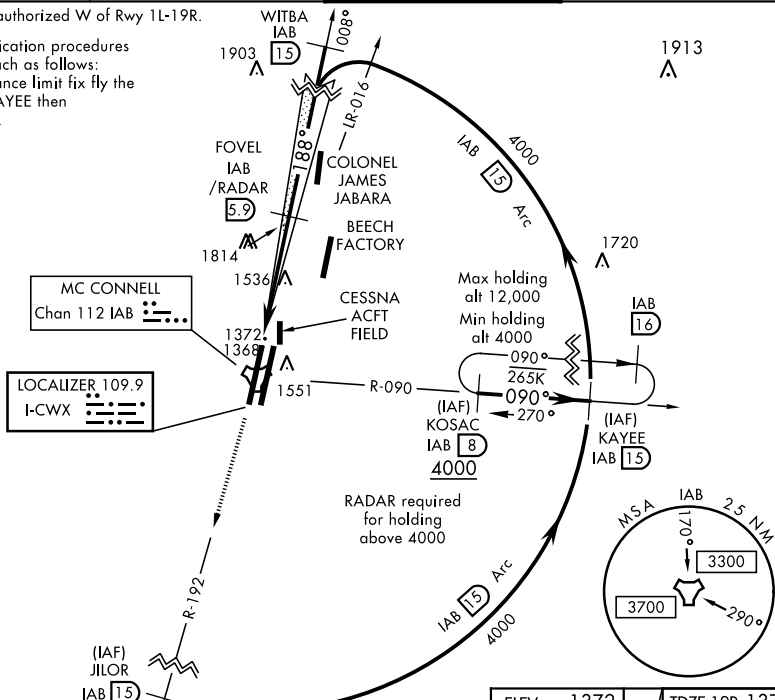


MISSED APPROACH: Climb to 4000 via IAB TACAN R-192 to 15 DME (JILOR). Expect further clearance from ATC.

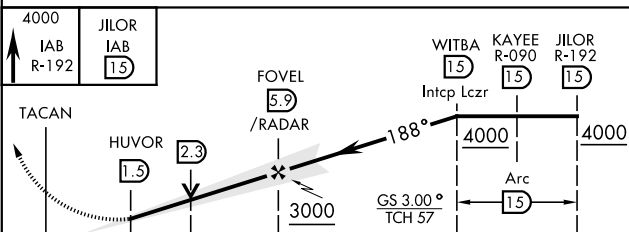
D-ATIS	WICHITA APP CON	MC CONNELL TOWER	GND CON
124.65 269.9	134.8 269.1	127.25 291.775	118.0 275.8

*** Circling not authorized W of Rwy 1L-19R.

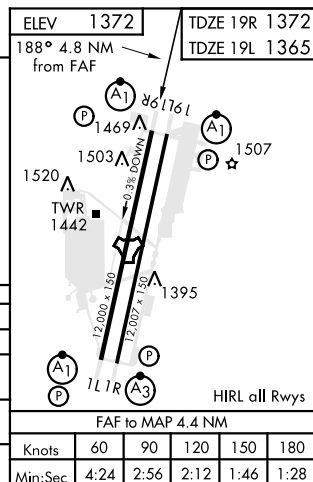
ATC lost communication procedures
on missed approach as follows:
At 15 DME clearance limit fix fly the
15 DME arc to KAYEE then
KOSAC and hold.



EMERG SAFE ALT 100 NM 4200



CATEGORY	A	B	C	D	E
S-ILS 19R *	1572/24		200	(200-½)	
S-LOC 19R**	1820/24	448 (500-½)	1820/45	448	(500-¾)
SIDESTEP RWY 19L	1820/55	455 (500-1)	1820-1⅓	455	(500-1⅓)
C CIRCLING***	1900-1	528 (600-1)	1900-1½ 528 (600-1½)	2400-3	1028 (1100-3)



WICHITA, KANSAS

37°37'N-97°16'W

MC CONNELL AFB (KIAB)

Amdt 5 10SEP20

ILS or LOC RWY 19R

NC-2, 31 DEC 2020 to 28 JAN 2021

NC-2, 31 DEC 2020 to 28 JAN 2021