

LOC/DME I-FOE	APP CRS	Rwy Idg	12803
110.1	312°	TDZE	1037
Chan 38		Apt Elev	1078

ILS or LOC RWY 31  
TOPEKA RGNL (F O E)

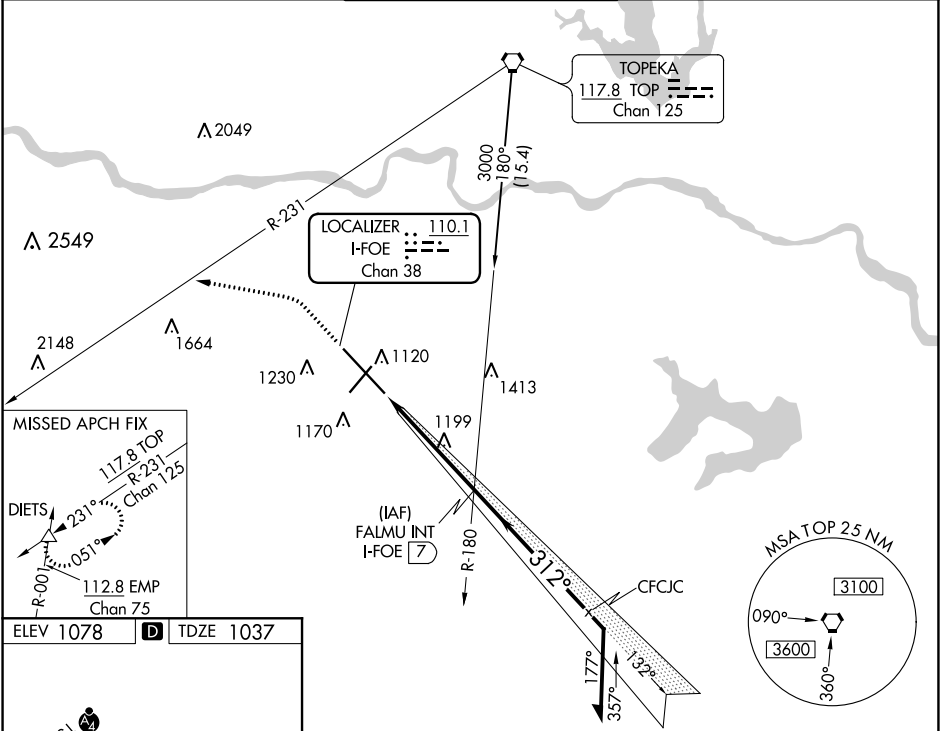
RADAR required for Cat E for Procedure Entry.

For inop ALS, increase S-ILS Cat E visibility to RVR 4000 and S-LOC Cat E visibility to 1 1/4 SM.  
# RVR 1800 authorized with use of FD or AP or HUD to DA.

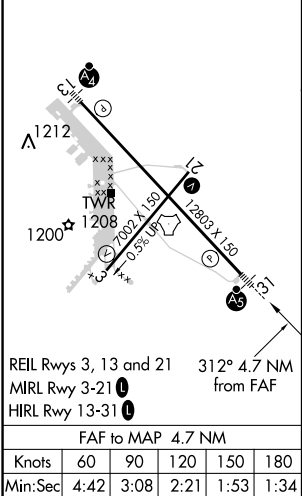
MALSR

MISSED APPROACH: Climb to 1900 then climbing left turn to 3700 on heading 275° and on TOP VORTAC R-231 to DIETS INT and hold.

ATIS	KANSAS CITY CENTER	FORBES TOWER*	GND CON	UNICOM
128.25	123.8 343.7	120.8 (CTAF) 340.2	118.425 275.8	122.95



ELEV 1078	TDZE 1037
-----------	-----------



1900	3700	TOP R-231	DIETS	FALMU I-FOE 7	Remain within 10 NM
hdg 275°					
* LOC only	Cat E procedure turn NA.				
I-FOE 2.3	* I-FOE 3.4				GS 3.00° TCH 58
1.1 NM	3.6 NM				
CATEGORY	A	B	C	D	E
S-ILS 31 #	1237/24 200 (200-1/2)				
S-LOC 31	1460/24 423 (400-1/2)	1460/40 423 (400-3/4)			
CIRCLING	1520-1 442 (500-1)	1580-1 502 (600-1)	1580-1 1/2 502 (600-1 1/2)	1700-2 622 (700-2)	1720-2 1/4 642 (700-2 1/4)

NC-2, 31 DEC 2020 to 28 JAN 2021

NC-2, 31 DEC 2020 to 28 JAN 2021