

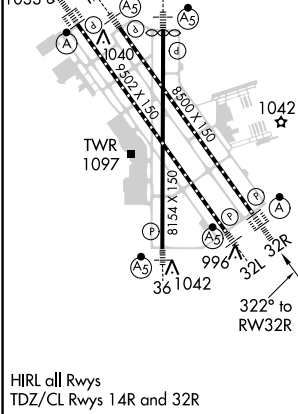
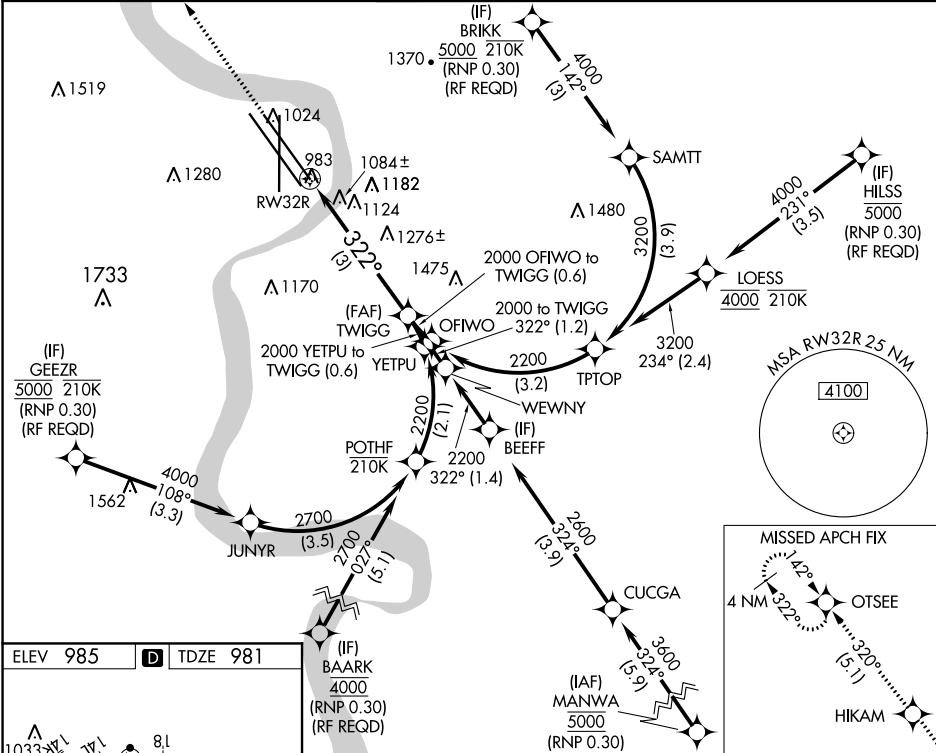
APP CRS	Rwy Idg	8500
322°	TDZE	981
	Apt Elev	985

# RNAV (RNP) Z RWY 32R

EPPLEY AIRFIELD (OMA)

RNP AR APCH. RF required.	ALSIF-2 	MISSED APPROACH: Climb to 3300 direct HIKAM and track 320° to OTSEE and hold.
For uncompensated Baro-VNAV systems, procedure NA below -19°C or above 54°C. For inop ALS, increase RNP 0.30 all Cats visibility to 1 1/4 SM.		

D-ATIS 120.4	OMAHA APP CON 120.1 354.05	OMAHA TOWER 132.1 256.9	GND CON 121.9	CLNC DEL 119.9
-----------------	-------------------------------	----------------------------	------------------	-------------------



3300	HIKAM	tr 320°	OTSEE	
See planview for multiple IF locations.				
<p>The diagram shows a planview of a flight path. A thick black line represents the flight path, starting from the left and turning right at a 322° angle. A dashed line with an arrow points to the start of the turn, labeled 'RW32R'. A vertical line extends upwards from the turn point, labeled 'TWIGG' and '2000'. A horizontal line with an arrow indicates a distance of '3 NM' from the turn point to the TWIGG line. A label '2000' with a double underline and an arrow points to the TWIGG line. To the right of the TWIGG line, the text 'GP 3.00°' and 'TCH 55' is displayed.</p>				
CATEGORY	A	B	C	D
RNP 0.11 DA	1313/26 332 (400-½ )			
RNP 0.15 DA	1407/40 426 (500-¾ )			
RNP 0.30 DA	1607-1⅜ 626 (700-1⅜)			
AUTHORIZATION REQUIRED				

NC-2, 31 DEC 2020 to 28 JAN 2021

NC-2, 31 DEC 2020 to 28 JAN 2021