

APP CRS	Rwy Idg	<b>8013</b>
<b>178°</b>	TDZE	<b>982</b>
	Apt Elev	<b>985</b>

RNAV (RNP) Z RWY 18  
EPPLEY AIRFIELD (OMA)

**T** For uncompensated Baro-VNAV systems, procedure NA below -17°C (2°F) or above 54°C (130°F). For inoperative ALS, increase RNP 0.15 all Cats visibility to 1½ and RNP 0.30 all Cats visibility to 2. GPS required.



**MISSED APPROACH:** Climb to 3000  
on track 178° to CIVV and hold.

D-ATIS  
120.4

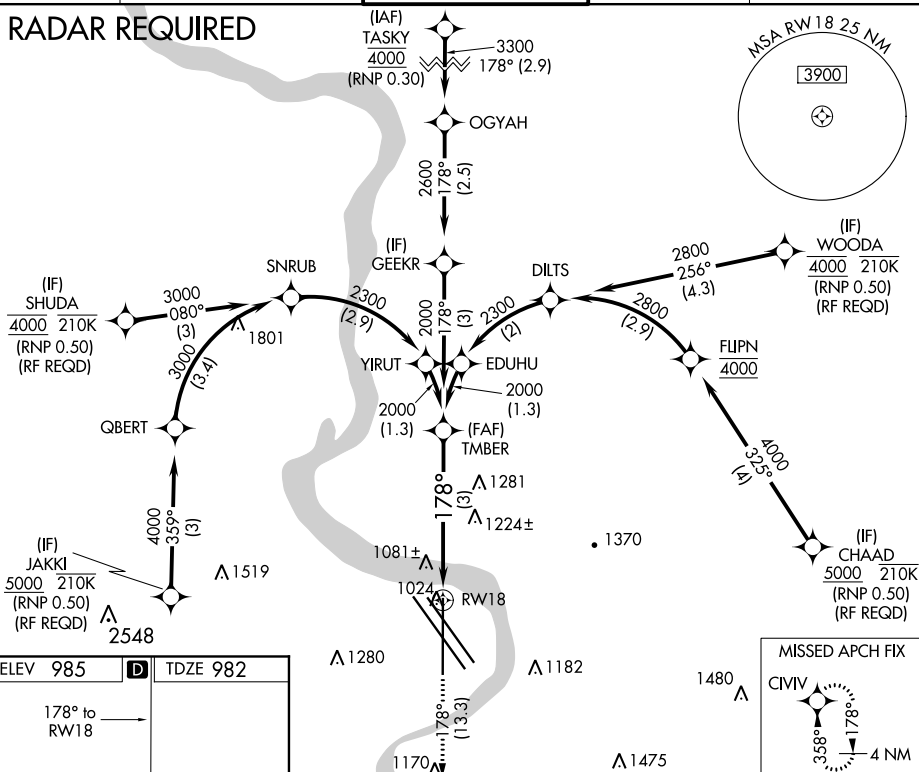
OMAHA APP CON  
120.1 354.05

OMAHA TOWER  
132-1 256-9


GND CON  
121.9

CLNC DEL  
**119.9**

## RADAR REQUIRED



ELEV 985	<b>D</b>	TDZE 982
----------	----------	----------

3000 ↑ tr 178°	CIVV 
----------------------	---

RW18

-79°

TMBER

2000

2000

GP 3.0

TCH 5

See planview for multiple IF locations.

3 NM

CATEGORY	A	B	C	D
RNP 0.15 DA		1341/40	359 (400-3%)	
RNP 0.30 DA		1576-1 5/8	594 (600-1%)	

**AUTHORIZATION REQUIRED**