

WAAS
CH 45739
W22A

APP CRS
223°

Rwy Idg
TDZE
Apt Elev

5132
1087
1087

RNAV (GPS) RWY 22

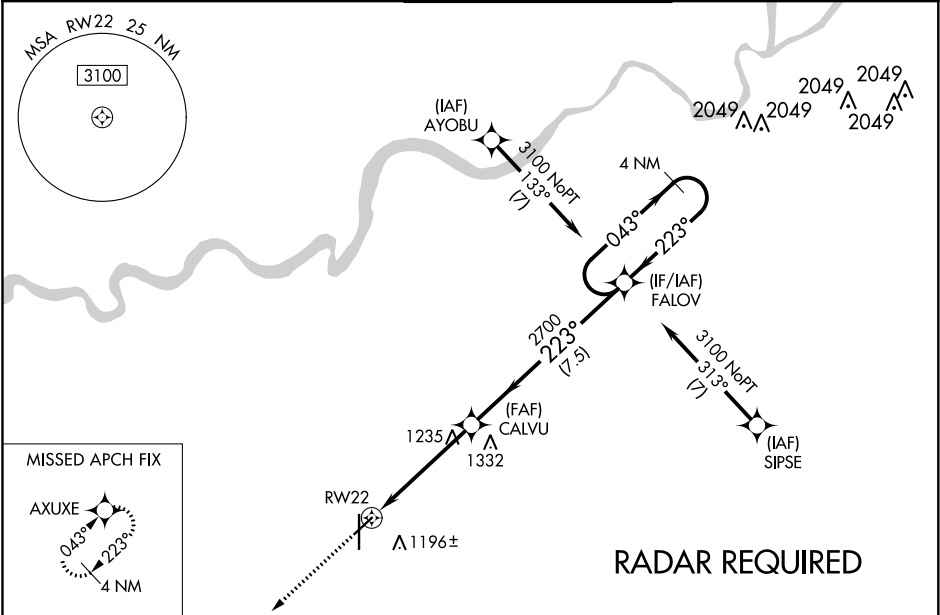
NEW CENTURY AIRCENTER (IXD)

⚠

For uncompensated Baro-VNAV systems, LNAV/VNAV NA below -17°C (-2°F) or above 54°C (130°F). Baro-VNAV and VDP NA when using Johnson County Executive altimeter setting. DME/DME RNP-0.3 NA. When local altimeter setting not received, use Johnson County Executive altimeter setting: increase LPV DA to 1355 feet, and LNAV/VNAV DA to 1368 feet, and all MDA 20 feet.

MISSED APPROACH: Climb to 3100 direct AXUXE and hold.

ASOS 135.325	KANSAS CITY APP CON 118.9 251.075	NEW CENTURY TOWER ★ 133.0 (CTAF) 0	GND CON 124.3	UNICOM 122.95
-----------------	--------------------------------------	---------------------------------------	------------------	------------------



ELEV 1087

TDZE 1087

3100

AXUXE

* LNAV only.

* 1.3 NM to RW22

RW22

1104

81

1095

TWR 1147

1200

1095

36

7339 X 1.50

0.5% UP

AS

223° to RW22

10.5% UP

5132 X 1.00

3100

AXUXE

CALVU

2700

FALOV

4 NM Holding Pattern

043° → 3100

← 223°

GP 3.00°

TCH 45

CATEGORY	A	B	C	D
LPV DA	1337-1		250 (300-1)	
LNAV/VNAV DA	1350-1		263 (300-1)	
LNAV MDA	1540-1	453 (500-1)	1540-1⅓	453 (500-1⅓)
CIRCLING	1560-1	473 (500-1)	1580-1½ 493 (500-1½)	1640-2 553 (600-2)

HIRL Rwy 18-36

MIRL Rwy 4-22

REIL Rwy 18