

VOR/DME LBF	APP CRS	Rwy Idg	4134
117.4	018°	TDZE	2776
Chan 121		Apt Elev	2777

VOR RWY 35

NORTH PLATTE RGNL AIRPORT LEE BIRD FIELD (LBF')

Rwy 35 helicopter visibility reduction below 3/4 SM NA.		MISSED APPROACH: Climbing right turn to 4900 direct LBF VOR/DME and hold, continue climb-in-hold to 4900.	
ASOS	DENVER CENTER	CLNC DEL	UNICOM
118.425	132.7 226.675	132.7	123.0 (CTAF) 0

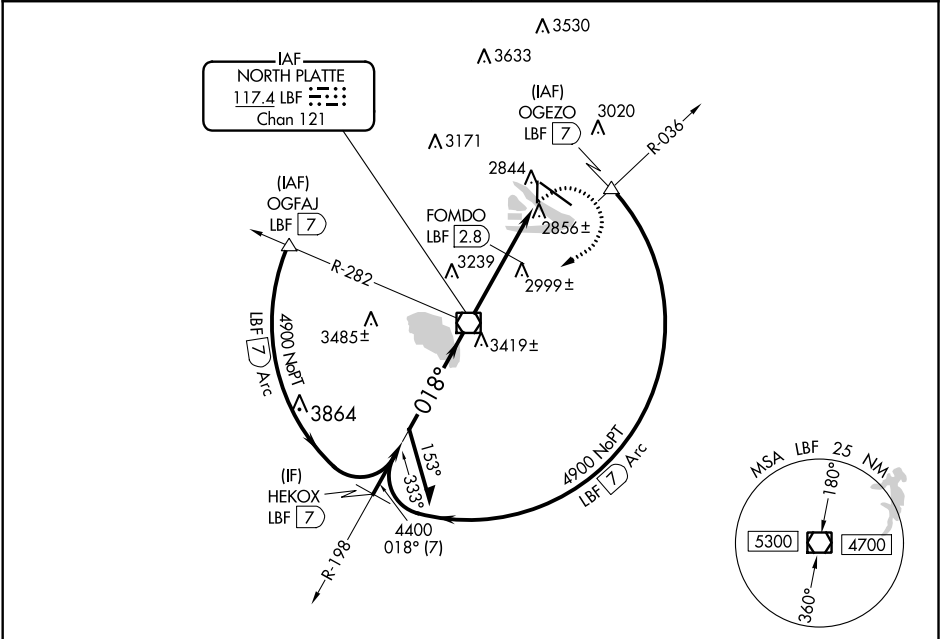


Diagram illustrating the approach path and descent angles for the runway. The path starts at 4900 feet, descends at 198° and 018° angles, and levels off at 3540 feet. The path is marked with LBF (Landing Bar) and VOR/DME. The descent angle is 3.12° TCH 37. The path is marked with LBF 2.8, LBF 3.7, and LBF 5. The path is marked with 2.8 NM, 0.9, and 1.3.

CATEGORY	A	B	C	D
S-35	3540-1 764 (800-1)	3540-1¼ 764 (800-1¼)	3540-2¼ 764 (800-2¼)	3540-2½ 764 (800-2½)
CIRCLING	3540-1 763 (800-1)	3540-1¼ 763 (800-1¼)	3540-2¼ 763 (800-2¼)	3560-2½ 783 (800-2½)

FOMDO FIX MINIMUMS				
S-35	3220-1 503 (600-1)	444 (500-1)	3220-1¼ 444 (500-1¼)	3220-1½ 444 (500-1½)
CIRCLING	3280-1 503 (600-1)	3320-1 543 (600-1)	3420-1¾ 643 (700-1¾)	3560-2½ 783 (800-2½)

ELEV 2777 D TDZE 2776

Diagram illustrating the approach path and descent angles for the runway. The path starts at 2840 feet, descends at 018° 5 NM from FAF, and levels off at 3540 feet. The path is marked with LBF 2.8, LBF 3.7, and LBF 5. The path is marked with 2.8 NM, 0.9, and 1.3.

Diagram illustrating the approach path and descent angles for the runway. The path starts at 2840 feet, descends at 018° 5 NM from FAF, and levels off at 3540 feet. The path is marked with LBF 2.8, LBF 3.7, and LBF 5. The path is marked with 2.8 NM, 0.9, and 1.3.

Diagram illustrating the approach path and descent angles for the runway. The path starts at 2840 feet, descends at 018° 5 NM from FAF, and levels off at 3540 feet. The path is marked with LBF 2.8, LBF 3.7, and LBF 5. The path is marked with 2.8 NM, 0.9, and 1.3.

Diagram illustrating the approach path and descent angles for the runway. The path starts at 2840 feet, descends at 018° 5 NM from FAF, and levels off at 3540 feet. The path is marked with LBF 2.8, LBF 3.7, and LBF 5. The path is marked with 2.8 NM, 0.9, and 1.3.

Diagram illustrating the approach path and descent angles for the runway. The path starts at 2840 feet, descends at 018° 5 NM from FAF, and levels off at 3540 feet. The path is marked with LBF 2.8, LBF 3.7, and LBF 5. The path is marked with 2.8 NM, 0.9, and 1.3.

Diagram illustrating the approach path and descent angles for the runway. The path starts at 2840 feet, descends at 018° 5 NM from FAF, and levels off at 3540 feet. The path is marked with LBF 2.8, LBF 3.7, and LBF 5. The path is marked with 2.8 NM, 0.9, and 1.3.

Diagram illustrating the approach path and descent angles for the runway. The path starts at 2840 feet, descends at 018° 5 NM from FAF, and levels off at 3540 feet. The path is marked with LBF 2.8, LBF 3.7, and LBF 5. The path is marked with 2.8 NM, 0.9, and 1.3.

Diagram illustrating the approach path and descent angles for the runway. The path starts at 2840 feet, descends at 018° 5 NM from FAF, and levels off at 3540 feet. The path is marked with LBF 2.8, LBF 3.7, and LBF 5. The path is marked with 2.8 NM, 0.9, and 1.3.

Diagram illustrating the approach path and descent angles for the runway. The path starts at 2840 feet, descends at 018° 5 NM from FAF, and levels off at 3540 feet. The path is marked with LBF 2.8, LBF 3.7, and LBF 5. The path is marked with 2.8 NM, 0.9, and 1.3.

Diagram illustrating the approach path and descent angles for the runway. The path starts at 2840 feet, descends at 018° 5 NM from FAF, and levels off at 3540 feet. The path is marked with LBF 2.8, LBF 3.7, and LBF 5. The path is marked with 2.8 NM, 0.9, and 1.3.

Diagram illustrating the approach path and descent angles for the runway. The path starts at 2840 feet, descends at 018° 5 NM from FAF, and levels off at 3540 feet. The path is marked with LBF 2.8, LBF 3.7, and LBF 5. The path is marked with 2.8 NM, 0.9, and 1.3.

Diagram illustrating the approach path and descent angles for the runway. The path starts at 2840 feet, descends at 018° 5 NM from FAF, and levels off at 3540 feet. The path is marked with LBF 2.8, LBF 3.7, and LBF 5. The path is marked with 2.8 NM, 0.9, and 1.3.

Diagram illustrating the approach path and descent angles for the runway. The path starts at 2840 feet, descends at 018° 5 NM from FAF, and levels off at 3540 feet. The path is marked with LBF 2.8, LBF 3.7, and LBF 5. The path is marked with 2.8 NM, 0.9, and 1.3.

Diagram illustrating the approach path and descent angles for the runway. The path starts at 2840 feet, descends at 018° 5 NM from FAF, and levels off at 3540 feet. The path is marked with LBF 2.8, LBF 3.7, and LBF 5. The path is marked with 2.8 NM, 0.9, and 1.3.

Diagram illustrating the approach path and descent angles for the runway. The path starts at 2840 feet, descends at 018° 5 NM from FAF, and levels off at 3540 feet. The path is marked with LBF 2.8, LBF 3.7, and LBF 5. The path is marked with 2.8 NM, 0.9, and 1.3.

Diagram illustrating the approach path and descent angles for the runway. The path starts at 2840 feet, descends at 018° 5 NM from FAF, and levels off at 3540 feet. The path is marked with LBF 2.8, LBF 3.7, and LBF 5. The path is marked with 2.8 NM, 0.9, and 1.3.

Diagram illustrating the approach path and descent angles for the runway. The path starts at 2840 feet, descends at 018° 5 NM from FAF, and levels off at 3540 feet. The path is marked with LBF 2.8, LBF 3.7, and LBF 5. The path is marked with 2.8 NM, 0.9, and 1.3.

Diagram illustrating the approach path and descent angles for the runway. The path starts at 2840 feet, descends at 018° 5 NM from FAF, and levels off at 3540 feet. The path is marked with LBF 2.8, LBF 3.7, and LBF 5. The path is marked with 2.8 NM, 0.9, and 1.3.

Diagram illustrating the approach path and descent angles for the runway. The path starts at 2840 feet, descends at 018° 5 NM from FAF, and levels off at 3540 feet. The path is marked with LBF 2.8, LBF 3.7, and LBF 5. The path is marked with 2.8 NM, 0.9, and 1.3.

Diagram illustrating the approach path and descent angles for the runway. The path starts at 2840 feet, descends at 018° 5 NM from FAF, and levels off at 3540 feet. The path is marked with LBF 2.8, LBF 3.7, and LBF 5. The path is marked with 2.8 NM, 0.9, and 1.3.

Diagram illustrating the approach path and descent angles for the runway. The path starts at 2840 feet, descends at 018° 5 NM from FAF, and levels off at 3540 feet. The path is marked with LBF 2.8, LBF 3.7, and LBF 5. The path is marked with 2.8 NM, 0.9, and 1.3.

Diagram illustrating the approach path and descent angles for the runway. The path starts at 2840 feet, descends at 018° 5 NM from FAF, and levels off at 3540 feet. The path is marked with LBF 2.8, LBF 3.7, and LBF 5. The path is marked with 2.8 NM, 0.9, and 1.3.

Diagram illustrating the approach path and descent angles for the runway. The path starts at 2840 feet, descends at 018° 5 NM from FAF, and levels off at 3540 feet. The path is marked with LBF 2.8, LBF 3.7, and LBF 5. The path is marked with 2.8 NM, 0.9, and 1.3.

Diagram illustrating the approach path and descent angles for the runway. The path starts at 2840 feet, descends at 018° 5 NM from FAF, and levels off at 3540 feet. The path is marked with LBF 2.8, LBF 3.7, and LBF 5. The path is marked with 2.8 NM, 0.9, and 1.3.

Diagram illustrating the approach path and descent angles for the runway. The path starts at 2840 feet, descends at 018° 5 NM from FAF, and levels off at 3540 feet. The path is marked with LBF 2.8, LBF 3.7, and LBF 5. The path is marked with 2.8 NM, 0.9, and 1.3.

Diagram illustrating the approach path and descent angles for the runway. The path starts at 2840 feet, descends at 018° 5 NM from FAF, and levels off at 3540 feet. The path is marked with LBF 2.8, LBF 3.7, and LBF 5. The path is marked with 2.8 NM, 0.9, and 1.3.

Diagram illustrating the approach path and descent angles for the runway. The path starts at 2840 feet, descends at 018° 5 NM from FAF, and levels off at 3540 feet. The path is marked with LBF 2.8, LBF 3.7, and LBF 5. The path is marked with 2.8 NM, 0.9, and 1.3.

Diagram illustrating the approach path and descent angles for the runway. The path starts at 2840 feet, descends at 018° 5 NM from FAF, and levels off at 3540 feet. The path is marked with LBF 2.8, LBF 3.7, and LBF 5. The path is marked with 2.8 NM, 0.9, and 1.3.

Diagram illustrating the approach path and descent angles for the runway. The path starts at 2840 feet, descends at 018° 5 NM from FAF, and levels off at 3540 feet. The path is marked with LBF 2.8, LBF 3.7, and LBF 5. The path is marked with 2.8 NM, 0.9, and 1.3.

Diagram illustrating the approach path and descent angles for the runway. The path starts at 2840 feet, descends at 018° 5 NM from FAF, and levels off at 3540 feet. The path is marked with LBF 2.8, LBF 3.7, and LBF 5. The path is marked with 2.8 NM, 0.9, and 1.3.

Diagram illustrating the approach path and descent angles for the runway. The path starts at 2840 feet, descends at 018° 5 NM from FAF, and levels off at 3540 feet. The path is marked with LBF 2.8, LBF 3.7, and LBF 5. The path is marked with 2.8 NM, 0.9, and 1.3.

Diagram illustrating the approach path and descent angles for the runway. The path starts at 2840 feet, descends at 018° 5 NM from FAF, and levels off at 3540 feet. The path is marked with LBF 2.8, LBF 3.7, and LBF 5. The path is marked with 2.8 NM, 0.9, and 1.3.

Diagram illustrating the approach path and descent angles for the runway. The path starts at 2840 feet, descends at 018° 5 NM from FAF, and levels off at 3540 feet. The path is marked with LBF 2.8, LBF 3.7, and LBF 5. The path is marked with 2.8 NM, 0.9, and 1.3.

Diagram illustrating the approach path and descent angles for the runway. The path starts at 2840 feet, descends at 018° 5 NM from FAF, and levels off at 3540 feet. The path is marked with LBF 2.8, LBF 3.7, and LBF 5. The path is marked with 2.8 NM, 0.9, and 1.3.

Diagram illustrating the approach path and descent angles for the runway. The path starts at 2840 feet, descends at 018° 5 NM from FAF, and levels off at 3540 feet. The path is marked with LBF 2.8, LBF 3.7, and LBF 5. The path is marked with 2.8 NM, 0.9, and 1.3.

Diagram illustrating the approach path and descent angles for the runway. The path starts at 2840 feet, descends at 018° 5 NM from FAF, and levels off at 3540 feet. The path is marked with LBF 2.8, LBF 3.7, and LBF 5. The path is marked with 2.8 NM, 0.9, and 1.3.

Diagram illustrating the approach path and descent angles for the runway. The path starts at 2840 feet, descends at 018° 5 NM from FAF, and levels off at 3540 feet. The path is marked with LBF 2.8, LBF 3.7, and LBF 5. The path is marked with 2.8 NM, 0.9, and 1.3.

Diagram illustrating the approach path and descent angles for the runway. The path starts at 2840 feet, descends at 018° 5 NM from FAF, and levels off at 3540 feet. The path is marked with LBF 2.8, LBF 3.7, and LBF 5. The path is marked with 2.8 NM, 0.9, and 1.3.

Diagram illustrating the approach path and descent angles for the runway. The path starts at 2840 feet, descends at 018° 5 NM from FAF, and levels off at 3540 feet. The path is marked with LBF 2.8, LBF 3.7, and LBF 5. The path is marked with 2.8 NM, 0.9, and 1.3.

Diagram illustrating the approach path and descent angles for the runway. The path starts at 2840 feet, descends at 018° 5 NM from FAF, and levels off at 3540 feet. The path is marked with LBF 2.8, LBF 3.7, and LBF 5. The path is marked with 2.8 NM, 0.9, and 1.3.

Diagram illustrating the approach path and descent angles for the runway. The path starts at 2840 feet, descends at 018° 5 NM from FAF, and levels off at 3540 feet. The path is marked with LBF 2.8, LBF 3.7, and LBF 5. The path is marked with 2.8 NM, 0.9, and 1.3.

Diagram illustrating the approach path and descent angles for the runway. The path starts at 2840 feet, descends at 018° 5 NM from FAF, and levels off at 3540 feet. The path is marked with LBF 2.8, LBF 3.7, and LBF 5. The path is marked with 2.8 NM, 0.9, and 1.3.

Diagram illustrating the approach path and descent angles for the runway. The path starts at 2840 feet, descends at 018° 5 NM from FAF, and levels off at 3540 feet. The path is marked with LBF 2.8, LBF 3.7, and LBF 5. The path is marked with 2.8 NM, 0.9, and 1.3.

Diagram illustrating the approach path and descent angles for the runway. The path starts at 2840 feet, descends at 018° 5 NM from FAF, and levels off at 3540 feet. The path is marked with LBF 2.8, LBF 3.7, and LBF 5. The path is marked with 2.8 NM, 0.9, and 1.3.

Diagram illustrating the approach path and descent angles for the runway. The path starts at 2840 feet, descends at 018° 5 NM from FAF, and levels off at 3540 feet. The path is marked with LBF 2.8, LBF 3.7, and LBF 5. The path is marked with 2.8 NM, 0.9, and 1.3.

Diagram illustrating the approach path and descent angles for the runway. The path starts at 2840 feet, descends at 018° 5 NM from FAF, and levels off at 3540 feet. The path is marked with LBF 2.8, LBF 3.7, and LBF 5. The path is marked with 2.8 NM, 0.9, and 1.3.

Diagram illustrating the approach path and descent angles for the runway. The path starts at 2840 feet, descends at 018° 5 NM from FAF, and levels off at 3540 feet. The path is marked with LBF 2.8, LBF 3.7, and LBF 5. The path is marked with 2.8 NM, 0.9, and 1.3.

Diagram illustrating the approach path and descent angles for the runway. The path starts at 2840 feet, descends at 018° 5 NM from FAF, and levels off at 3540 feet. The path is marked with LBF 2.8, LBF 3.7, and LBF 5. The path is marked with 2.8 NM, 0.9, and 1.3.

Diagram illustrating the approach path and descent angles for the runway. The path starts at 2840 feet, descends at 018° 5 NM from FAF, and levels off at 3540 feet. The path is marked with LBF 2.8, LBF 3.7, and LBF 5. The path is marked with 2.8 NM, 0.9, and 1.3.

Diagram illustrating the approach path and descent angles for the runway. The path starts at 2840 feet, descends at 018° 5 NM from FAF, and levels off at 3540 feet. The path is marked with LBF 2.8, LBF 3.7, and LBF 5. The path is marked with 2.8 NM, 0.9, and 1.3.

Diagram illustrating the approach path and descent angles for the runway. The path starts at 2840 feet, descends at 018° 5 NM from FAF, and levels off at 3540 feet. The path is marked with LBF 2.8, LBF 3.7, and LBF 5. The path is marked with 2.8 NM, 0.9, and 1.3.

Diagram illustrating the approach path and descent angles for the runway. The path starts at 2840 feet, descends at 018° 5 NM from FAF, and levels off at 3540 feet. The path is marked with LBF 2.8, LBF 3.7, and LBF 5. The path is marked with 2.8 NM, 0.9, and 1.3.

Diagram illustrating the approach path and descent angles for the runway. The path starts at 2840 feet, descends at 018° 5 NM from FAF, and levels off at 3540 feet. The path is marked with LBF 2.8, LBF 3.7, and LBF 5. The path is marked with 2.8 NM, 0.9, and 1.3.

Diagram illustrating the approach path and descent angles for the runway. The path starts at 2840 feet, descends at 018° 5 NM from FAF, and levels off at 3540 feet. The path is marked with LBF 2.8, LBF 3.7, and LBF 5. The path is marked with 2.8 NM, 0.9, and 1.3.

Diagram illustrating the approach path and descent angles for the runway. The path starts at 2840 feet, descends at 018° 5 NM from FAF, and levels off at 3540 feet. The path is marked with LBF 2.8, LBF 3.7, and LBF 5. The path is marked with 2.8 NM, 0.9, and 1.3.

Diagram illustrating the approach path and descent angles for the runway. The path starts at 2840 feet, descends at 018° 5 NM from FAF, and levels off at 3540 feet. The path is marked with LBF 2.8, LBF 3.7, and LBF 5. The path is marked with 2.8 NM, 0.9, and 1.3.

Diagram illustrating the approach path and descent angles for the runway. The path starts at 2840 feet, descends at 018° 5 NM from FAF, and levels off at 3540 feet. The path is marked with LBF 2.8, LBF 3.7, and LBF 5. The path is marked with 2.8 NM, 0.9, and 1.3.

Diagram illustrating the approach path and descent angles for the runway. The path starts at 2840 feet, descends at 018° 5 NM from FAF, and levels off at 3540 feet. The path is marked with LBF 2.8, LBF 3.7, and LBF 5. The path is marked with 2.8 NM, 0.9, and 1.3.

Diagram illustrating the approach path and descent angles for the runway. The path starts at 2840 feet, descends at 018° 5 NM from FAF, and levels off at 3540 feet. The path is marked with LBF 2.8, LBF 3.7, and LBF 5. The path is marked with 2.8 NM, 0.9, and 1.3.

Diagram illustrating the approach path and descent angles for the runway. The path starts at 2840 feet, descends at 018° 5 NM from FAF, and levels off at 3540 feet. The path is marked with LBF 2.8, LBF 3.7, and LBF 5. The path is marked with 2.8 NM, 0.9, and 1.3.

Diagram illustrating the approach path and descent angles for the runway. The path starts at 2840 feet, descends at 018° 5 NM from FAF, and levels off at 3540 feet. The path is marked with LBF 2.8, LBF 3.7, and LBF 5. The path is marked with 2.8 NM, 0.9, and 1.3.

Diagram illustrating the approach path and descent angles for the runway. The path starts at 2840 feet, descends at 018° 5 NM from FAF, and levels off at 3540 feet. The path is marked with LBF 2.8, LBF 3.7, and LBF 5. The path is marked with 2.8 NM, 0.9, and 1.3.

Diagram illustrating the approach path and descent angles for the runway. The path starts at 2840 feet, descends at 018° 5 NM from FAF, and levels off at 3540 feet. The path is marked with LBF 2.8, LBF 3.7, and LBF 5. The path is marked with 2.8 NM, 0.9, and 1.3.

Diagram illustrating the approach path and descent angles for the runway. The path starts at 2840 feet, descends at 018° 5 NM from FAF, and levels off at 3540 feet. The path is marked with LBF 2.8, LBF 3.7, and LBF 5. The path is marked with 2.8 NM, 0.9, and 1.3.

Diagram illustrating the approach path and descent angles for the runway. The path starts at 2840 feet, descends at 018° 5 NM from FAF, and levels off at 3540 feet. The path is marked with LBF 2.8, LBF 3.7, and LBF 5. The path is marked with 2.8 NM, 0.9, and 1.3.

Diagram illustrating the approach path and descent angles for the runway. The path starts at 2840 feet, descends at 018° 5 NM from FAF, and levels off at 3540 feet. The path is marked with LBF 2.8, LBF 3.7, and LBF 5. The path is marked with 2.8 NM, 0.9, and 1.3.

Diagram illustrating the approach path and descent angles for the runway. The path starts at 2840 feet, descends at 018° 5 NM from FAF, and levels off at 3540 feet. The path is marked with LBF 2.8, LBF 3.7, and LBF 5. The path is marked with 2.8 NM, 0.9, and 1.3.

Diagram illustrating the approach path and descent angles for the runway. The path starts at 2840 feet, descends at 018° 5 NM from FAF, and levels off at 3540 feet. The path is marked with LBF 2.8, LBF 3.7, and LBF 5. The path is marked with 2.8 NM, 0.9, and 1.3.

Diagram illustrating the approach path and descent angles for the runway. The path starts at 2840 feet, descends at 018° 5 NM from FAF, and levels off at 3540 feet. The path is marked with LBF 2.8, LBF 3.7, and LBF 5. The path is marked with 2.8 NM, 0.9, and 1.3.

Diagram illustrating the approach path and descent angles for the runway. The path starts at 2840 feet, descends at 018° 5 NM from FAF, and levels off at 3540 feet. The path is marked with LBF 2.8, LBF 3.7, and LBF 5. The path is marked with 2.8 NM, 0.9, and 1.3.

Diagram illustrating the approach path and descent angles for the runway. The path starts at 2840 feet, descends at 018° 5 NM from FAF, and levels off at 3540 feet. The path is marked with LBF 2.8, LBF 3.7, and LBF 5. The path is marked with 2.8 NM, 0.9, and 1.3.

Diagram illustrating the approach path and descent angles for the runway. The path starts at 2840 feet, descends at 018° 5 NM from FAF, and levels off at 3540 feet. The path is marked with LBF 2.8, LBF 3.7, and LBF 5. The path is marked with 2.8 NM, 0.9, and 1.3.

Diagram illustrating the approach path and descent angles for the runway. The path starts at 2840 feet, descends at 018° 5 NM from FAF, and levels off at 3540 feet. The path is marked with LBF 2.8, LBF 3.7, and LBF 5. The path is marked with 2.8 NM, 0.9, and 1.3.

Diagram illustrating the approach path and descent angles for the runway. The path starts at 2840 feet, descends at 018° 5 NM from FAF, and levels off at 3540 feet. The path is marked with LBF 2.8, LBF 3.7, and LBF 5. The path is marked with 2.8 NM, 0.9, and 1.3.

Diagram illustrating the approach path and descent angles for the runway. The path starts at 2840 feet, descends at 018° 5 NM from FAF, and levels off at 3540 feet. The path is marked with LBF 2.8, LBF 3.7, and LBF 5. The path is marked with 2.8 NM, 0.9, and 1.3.

Diagram illustrating the approach path and descent angles for the runway. The path starts at 2840 feet, descends at 018° 5 NM from FAF, and levels off at 3540 feet. The path is marked with LBF 2.8, LBF 3.7, and LBF 5. The path is marked with 2.8 NM, 0.9, and 1.3.

Diagram illustrating the approach path and descent angles for the runway. The path starts at 2840 feet, descends at 018° 5 NM from FAF, and levels off at 3540 feet. The path is marked with LBF 2.8, LBF 3.7, and LBF 5. The path is marked with 2.8 NM, 0.9, and 1.3.

Diagram illustrating the approach path and descent angles for the runway. The path starts at 2840 feet, descends at 018° 5 NM from FAF, and levels off at 3540 feet. The path is marked with LBF 2.8, LBF 3.7, and LBF 5. The path is marked with 2.8 NM, 0.9, and 1.3.

Diagram illustrating the approach path and descent angles for the runway. The path starts at 2840 feet, descends at 018° 5 NM from FAF, and levels off at 3540 feet. The path is marked with LBF 2.8, LBF 3.7, and LBF 5. The path is marked with 2.8 NM, 0.9, and 1.3.

Diagram illustrating the approach path and descent angles for the runway. The path starts at 2840 feet, descends at 018° 5 NM from FAF, and levels off at 3540 feet. The path is marked with LBF 2.8, LBF 3.7, and LBF 5. The path is marked with 2.8 NM, 0.9, and 1.3.

Diagram illustrating the approach path and descent angles for the runway. The path starts at 2840 feet, descends at 018° 5 NM from FAF, and levels off at 3540 feet. The path is marked with LBF 2.8, LBF 3.7, and LBF 5. The path is marked with 2.8 NM, 0.9, and 1.3.

Diagram illustrating the approach path and descent angles for the runway. The path starts at 2840 feet, descends at 018° 5 NM from FAF, and levels off at 3540 feet. The path is marked with LBF 2.8, LBF 3.7, and LBF 5. The path is marked with 2.8 NM, 0.9, and 1.3.

Diagram illustrating the approach path and descent angles for the runway. The path starts at 2840 feet, descends at 018° 5 NM from FAF, and levels off at 3540 feet. The path is marked with LBF 2.8, LBF 3.7, and LBF 5. The path is marked with 2.8 NM, 0.9, and 1.3.

Diagram illustrating the approach path and descent angles for the runway. The path starts at 2840 feet, descends at 018° 5 NM from FAF, and levels off at 3540 feet. The path is marked with LBF 2.8, LBF 3.7, and LBF 5. The path is marked with 2.8 NM, 0.9, and 1.3.

Diagram illustrating the approach path and descent angles for the runway. The path starts at 2840 feet, descends at 018° 5 NM from FAF, and levels off at 3540 feet. The path is marked with LBF 2.8, LBF 3.7, and LBF 5. The path is marked with 2.8 NM, 0.9, and 1.3.

Diagram illustrating the approach path and descent angles for the runway. The path starts at 2840 feet, descends at 018° 5 NM from FAF, and levels off at 3540 feet. The path is marked with LBF 2.8, LBF 3.7, and LBF 5. The path is marked with 2.8 NM, 0.9, and 1.3.

Diagram illustrating the approach path and descent angles for the runway. The path starts at 2840 feet, descends at 018° 5 NM from FAF, and levels off at 3540 feet. The path is marked with LBF 2.8, LBF 3.7, and LBF 5. The path is marked with 2.8 NM, 0.9, and 1.3.

Diagram illustrating the approach path and descent angles for the runway. The path starts at 2840 feet, descends at 018° 5 NM from FAF, and levels off at 3540 feet. The path is marked with LBF 2.8, LBF 3.7, and LBF 5. The path is marked with 2.8 NM, 0.9, and 1.3.

Diagram illustrating the approach path and descent angles for the runway. The path starts at 2840 feet, descends at 018° 5 NM from FAF, and levels off at 3540 feet. The path is marked with LBF 2.8, LBF 3.7, and LBF 5. The path is marked with 2.8 NM, 0.9, and 1.3.

Diagram illustrating the approach path and descent angles for the runway. The path starts at 2840 feet, descends at 018° 5 NM from FAF, and levels off at 3540 feet. The path is marked with LBF 2.8, LBF 3.7, and LBF 5. The path is marked with 2.8 NM, 0.9, and 1.3.

Diagram illustrating the approach path and descent angles for the runway. The path starts at 2840 feet, descends at 018° 5 NM from FAF, and levels off at 3540 feet. The path is marked with LBF 2.8, LBF 3.7, and LBF 5. The path is marked with 2.8 NM, 0.9, and 1.3.

Diagram illustrating the approach path and descent angles for the runway. The path starts at 2840 feet, descends at 018° 5 NM from FAF, and levels off at 3540 feet. The path is marked with LBF 2.8, LBF 3.7, and LBF 5. The path is marked with 2.8 NM, 0.9, and 1.3.

Diagram illustrating the approach path and descent angles for the runway. The path starts at 2840 feet, descends at 018° 5 NM from FAF, and levels off at 3540 feet. The path is marked with LBF 2.8, LBF 3.7, and LBF 5. The path is marked with 2.8 NM, 0.9, and 1.3.

Diagram illustrating the approach path and descent angles for the runway. The path starts at 2840 feet, descends at 018° 5 NM from FAF, and levels off at 3540 feet. The path is marked with LBF 2.8, LBF 3.7, and LBF 5. The path is marked with 2.8 NM, 0.9, and 1.3.

Diagram illustrating the approach path and descent angles for the runway. The path starts at 2840 feet, descends at 018° 5 NM from FAF, and levels off at 3540 feet. The path is marked with LBF 2.8, LBF 3.7, and LBF 5. The path is marked with 2.8 NM, 0.9, and 1.3.

Diagram illustrating the approach path and descent angles for the runway. The path starts at 2840 feet, descends at 018° 5 NM from FAF, and levels off at 3540 feet. The path is marked with LBF 2.8, LBF 3.7, and LBF 5. The path is marked with 2.8 NM, 0.9, and 1.3.

Diagram illustrating the approach path and descent angles for the runway. The path starts at 2840 feet, descends at 018° 5 NM from FAF, and levels off at 3540 feet. The path is marked with LBF 2.8, LBF 3.7, and LBF 5. The path is marked with 2.8 NM, 0.9, and 1.3.

Diagram illustrating the approach path and descent angles for the runway. The path starts at 2840 feet, descends at 018° 5 NM from FAF, and levels off at 3540 feet. The path is marked with LBF 2.8, LBF 3.7, and LBF 5. The path is marked with 2.8 NM, 0.9, and 1.3.

Diagram illustrating the approach path and descent angles for the runway. The path starts at 2840 feet, descends at 018° 5 NM from FAF, and levels off at 3540 feet. The path is marked with LBF 2.8, LBF 3.7, and LBF 5. The path is marked with 2.8 NM, 0.9, and 1.3.

Diagram illustrating the approach path and descent angles for the runway. The path starts at 2840 feet, descends at 018° 5 NM from FAF, and levels off at 3540 feet. The path is marked with LBF 2.8, LBF 3.7, and LBF 5. The path is marked with 2.8 NM, 0.9, and 1.3.

Diagram illustrating the approach path and descent angles for the runway. The path starts at 2840 feet, descends at 018° 5 NM from FAF, and levels off at 3540 feet. The path is marked with LBF 2.8, LBF 3.7, and LBF 5. The path is marked with 2.8 NM, 0.9, and 1.3.

Diagram illustrating the approach path and descent angles for the runway. The path starts at 2840 feet, descends at 018° 5 NM from FAF, and levels off at 3540 feet. The path is marked with LBF 2.8, LBF 3.7, and LBF 5. The path is marked with 2.8 NM, 0.9, and 1.3.

Diagram illustrating the approach path and descent angles for the runway. The path starts at 2840 feet, descends at 018° 5 NM from FAF, and levels off at 3540 feet. The path is marked with LBF 2.8, LBF 3.7, and LBF 5. The path is marked with 2.8 NM, 0.9, and 1.3.

Diagram illustrating the approach path and descent angles for the runway. The path starts at 2840 feet, descends at 018° 5 NM from FAF, and levels off at 3540 feet. The path is marked with LBF 2.8, LBF 3.7, and LBF 5. The path is marked with 2.8 NM, 0.9, and 1.3.

Diagram illustrating the approach path and descent angles for the runway. The path starts at 2840 feet, descends at 018° 5 NM from FAF, and levels off at 3540 feet. The path is marked with LBF 2.8, LBF 3.7, and LBF 5. The path is marked with 2.8 NM, 0.9, and 1.3.

Diagram illustrating the approach path and descent angles for the runway. The path starts at 2840 feet, descends at 018° 5 NM from FAF, and levels off at 3540 feet. The path is marked with LBF 2.8, LBF 3.7, and LBF 5. The path is marked with 2.8 NM, 0.9, and 1.3.

Diagram illustrating the approach path and descent angles for the runway. The path starts at 2840 feet, descends at 018° 5 NM from FAF, and levels off at 3540 feet. The path is marked with LBF 2.8, LBF 3.7, and LBF 5. The path is marked with 2.8 NM, 0.9, and 1.3.

Diagram illustrating the approach path and descent angles for the runway. The path starts at 2840 feet, descends at 018° 5 NM from FAF, and levels off at 3540 feet. The path is marked with LBF 2.8, LBF 3.7, and LBF 5. The path is marked with 2.8 NM, 0.9, and 1.3.

Diagram illustrating the approach path and descent angles for the runway. The path starts at 2840 feet, descends at 018° 5 NM from FAF, and levels off at 3540 feet. The path is marked with LBF 2.8, LBF 3.7, and LBF 5. The path is marked with 2.8 NM, 0.9, and 1.3.

Diagram illustrating the approach path and descent angles for the runway. The path starts at 2840 feet, descends at 018° 5 NM from FAF, and levels off at 3540 feet. The path is marked with LBF 2.8, LBF 3.7, and LBF 5. The path is marked with 2.8 NM, 0.9, and 1.3.

Diagram illustrating the approach path and descent angles for the runway. The path starts at 2840 feet, descends at 018° 5 NM from FAF, and levels off at 3540 feet. The path is marked with LBF 2.8, LBF 3.7, and LBF 5. The path is marked with 2.8 NM, 0.9, and 1.3.

Diagram illustrating the approach path and descent angles for the runway. The path starts at 2840 feet, descends at 018° 5 NM from FAF, and levels off at 3540 feet. The path is marked with LBF 2.8, LBF 3.7, and LBF 5. The path is marked with 2.8 NM, 0.9, and 1.3.

Diagram illustrating the approach path and descent angles for the runway. The path starts at 2840 feet, descends at 018° 5 NM from FAF, and levels off at 3540 feet. The path is marked with LBF 2.8, LBF 3.7, and LBF 5. The path is marked with 2.8 NM, 0.9, and 1.3.

Diagram illustrating the approach path and descent angles for the runway. The path starts at 2840 feet, descends at 018° 5 NM from FAF, and levels off at 3540 feet. The path is marked with LBF 2.8, LBF 3.7, and LBF 5. The path is marked with 2.8 NM, 0.9, and 1.3.

Diagram illustrating the approach path and descent angles for the runway. The path starts at 2840 feet, descends at 018° 5 NM from FAF, and levels off at 3540 feet. The path is marked with LBF 2.8, LBF 3.7, and LBF 5. The path is marked with 2.8 NM, 0.9, and 1.3.

Diagram illustrating the approach path and descent angles for the runway. The path starts at 2840 feet, descends at 018° 5 NM from FAF, and levels off at 3540 feet. The path is marked with LBF 2.8, LBF 3.7, and LBF 5. The path is marked with 2.8 NM, 0.9, and 1.3.

Diagram illustrating the approach path and descent angles for the runway. The path starts at 2840 feet, descends at 018° 5 NM from FAF, and levels off at 3540 feet. The path is marked with

NC-2, 31 DEC 2020 to 28 JAN 2021

NC-2, 31 DEC 2020 to 28 JAN 2021