

WAAS CH <b>40137</b> <b>W17A</b>	APP CRS <b>177°</b>	Rwy Idg <b>5400</b> TDZE <b>1219</b> Apt Elev <b>1219</b>
--	------------------------	---

RNAV (GPS) RWY 17

LINCOLN (LNK)

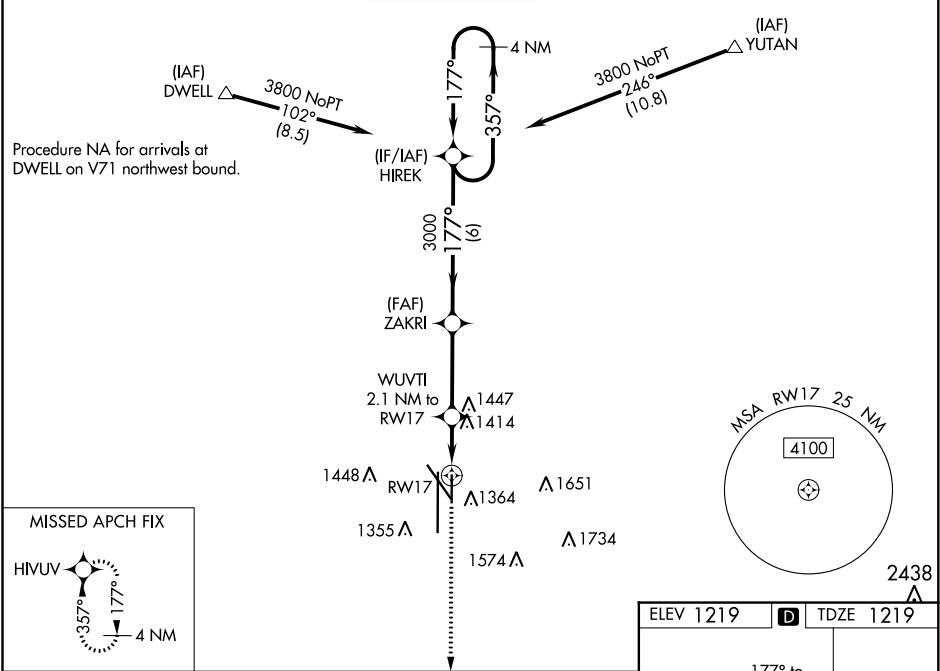
▼

▲

Baro-VNAV NA when using Beatrice altimeter setting. For uncompensated Baro-VNAV systems, LNAV/VNAV NA below -22°C (-7°F) or above 54°C (130°F). DME/DME RNP-0.3 NA. When local altimeter setting not received, use Beatrice altimeter setting and increase all DA 91 feet, and all MDA 100 feet, increase LPV and LNAV/VNAV all Cats visibility ¼ mile, increase LNAV Cats C/D and Circling Cats C/D visibility ¼ mile.

MISSED APPROACH:  
Climb to 3300 direct  
HIVUV and hold.

ATIS <b>118.05 290.9</b>	OMAHA APP CON <b>124.0 270.3</b>	LINCOLN TOWER* <b>118.5(CTAF) 253.5</b>	GND CON <b>121.9 275.8</b>	CLNC DEL <b>120.7 225.4</b>	UNICOM <b>122.95</b>
-----------------------------	-------------------------------------	--	-------------------------------	--------------------------------	-------------------------



3300	HIVUV	WUVTI 2.1 NM to RWY 17	ZAKRI	HIREK	4 NM Holding Pattern
* LNAV only.		* 1.3 NM to RWY 17	3000	177°	357° → 3800
			1920*	3000	GP 3.00° TCH 44
		1.3 NM	0.8 NM	3.4 NM	6 NM
CATEGORY		A	B	C	D
LPV DA			1419-¾	200 (200-¾)	
LNAV/VNAV DA			1615-1⅜	396 (400-1⅜)	
LNAV MDA		1680-1	461 (500-1)	1680-1⅜	461 (500-1⅜)
CIRCLING		1680-1 461 (500-1)	1760-1 541 (600-1)	1820-1¾ 601 (700-1¾)	1960-2½ 741 (800-2½)

