

LOC F-LNK <u>109.9</u>	APP CRS 357°	Rwy Idg 12901 TDZE 1175 Apt Elev 1219
----------------------------------	------------------------	--

ILS or LOC RWY 36
LINCOLN (LNK)

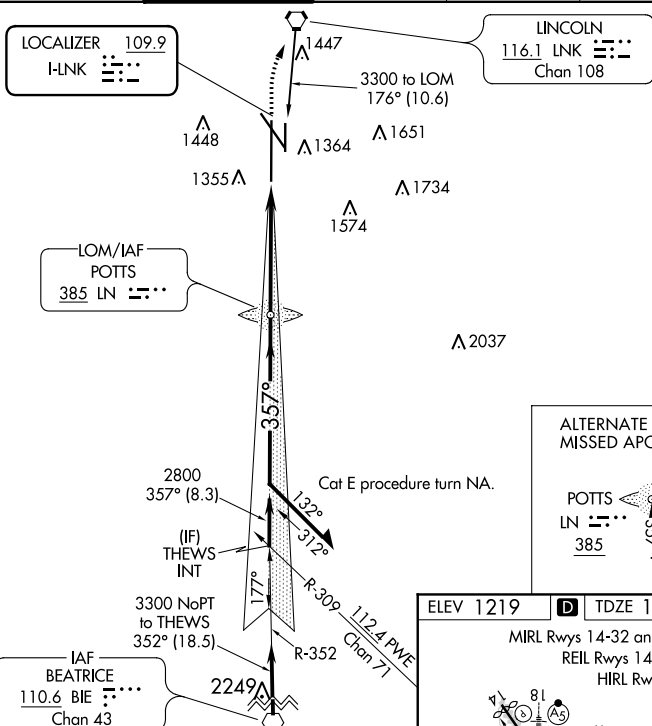
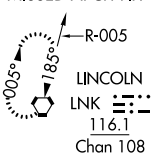
⚠ When local altimeter setting not received use Beattrice altimeter setting and increase all DA 91 feet and all MDA 100 feet, increase S-LOC 36 Cat C/D/E visibility to 1 3/4, Circling Cat C visibility to 1 3/4, and Cat D visibility to 2 1/4. For inop MALSR, increase S-ILS 36 Cat E visibility to RVR 4000, S-LOC 36 Cat E visibility to 1 3/4. For inop MALSR when using Beattrice altimeter setting, increase S-ILS 36 all Cats visibility to RVR 4500, S-LOC 36 Cat E visibility to 1 3/4. * RVR 1800 authorized with use of FD or AP or HUD to DA (NA when using Beattrice altimeter setting).



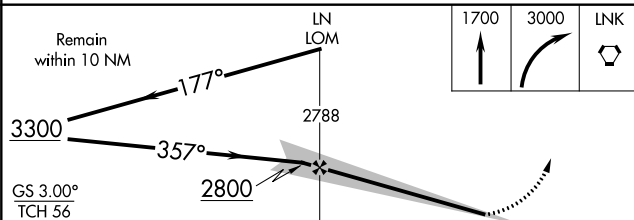
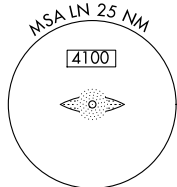
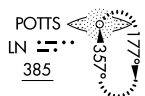
MISSED APPROACH:
Climb to 1700 then
climbing right turn to
3000 direct LNK
VORTAC and hold.

ATIS 118.05 290.9	OMAHA APP CON 124.0 270.3	LINCOLN TOWER ★ 118.5 (CTAF) 253.5	GND CON 121.9 275.8	CLNC DEL 120.7 225.4	UNICOM 122.95
----------------------	------------------------------	---------------------------------------	------------------------	-------------------------	------------------

MISSED APCH FIX



ALTERNATE
MISSED APCH FIX



			4.8 NM		
CATEGORY	A	B	C	D	E
S-ILS 36 *	1375/24 200 (200-½)				
S-LOC 36	1680/24	505 (500-½)	1680/55 505 (500-1)		
CIRCLING	1680-1 461 (500-1)	1760-1 541 (600-1)	1760-1½ 541 (600-½)	1820-2 601 (700-2)	2040-3 821 (900-3)

[illegible]