

## HI-VOR/DME or TACAN RWY 18

JAL-232 [USAF]

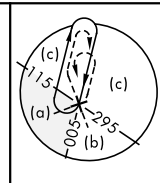
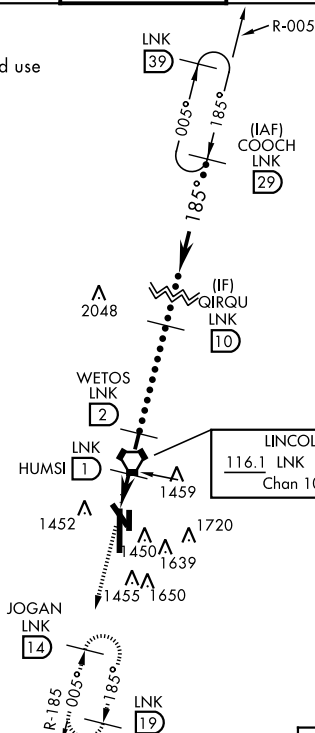
LINCOLN (KLNK)

VORTAC LNK <b>116.1</b> Chan <b>108</b>	APCH CRS <b>185°</b>	Rwy ldg <b>12,901</b> TDZE <b>1195</b> Arpt Elev <b>1219</b>
---	-------------------------	--

<b>▼</b>	<b>MALSR</b> <b>A5</b>	MISSED APPROACH: Climb to 3300 via LNK VORTAC R-185 to JOGAN 14 DME and hold.		
ATIS <b>118.05 290.9</b>	OMAHA APP CON <b>124.0 270.3</b>	LINCOLN TOWER ★ <b>118.5 253.5</b>	GND CON <b>121.9 275.8</b>	CLNC DEL <b>120.7 225.4</b>

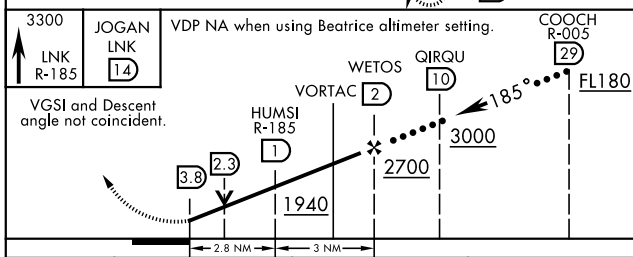
Inoperative table does not apply.

When local altimeter setting not received use Beatrice altimeter setting.

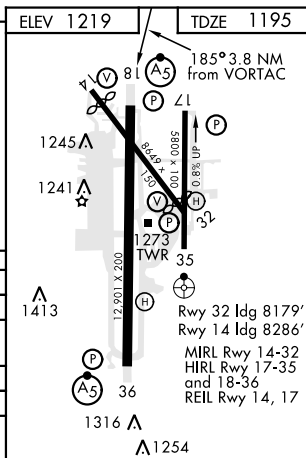


## RADAR REQUIRED

EMERG SAFE ALT 100 NM 4800



CATEGORY	C	D	E
S-18	1720-1½	525	(600-1½)
CIRCLING	1760-1½ 541 (600-1½)	1820-2 601 (700-2)	2040-3 821 (900-3)
BEATRICE ALTIMETER SETTING			
S-18	1820-1¾	625	(700-1¾)
CIRCLING	1860-1½ 641 (700-1½)	1920-2¼ 701 (800-2¼)	2140-3¼ 921 (1000-3¼)



## HI-VOR/DME or TACAN RWY 18