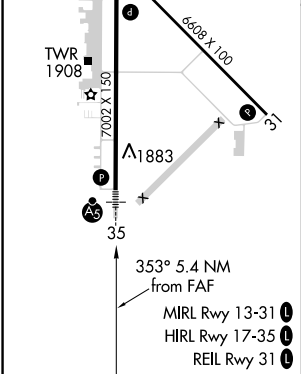
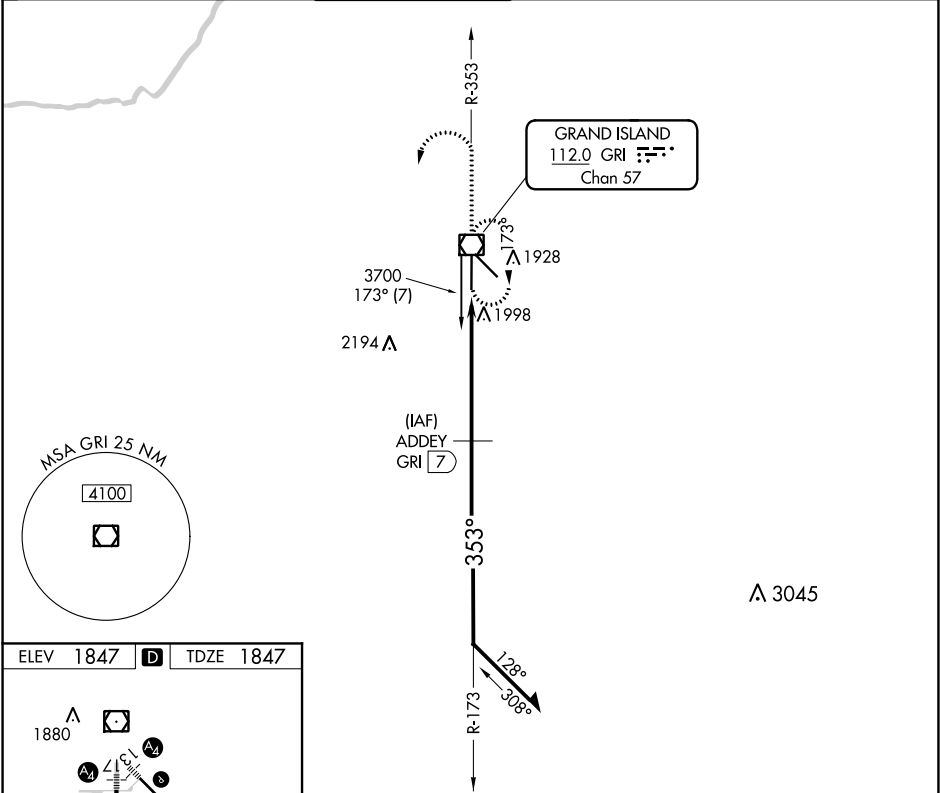


VOR/DME GRI	APP CRS	Rwy Idg	7002
112.0	353°	TDZE	1847
Chan 57		Apt Elev	1847

VOR/DME RWY 35
CENTRAL NEBRASKA RGNL (GRI)

<p>V VDP NA when using Aurora altimeter setting. When local altimeter setting not received, use Aurora altimeter setting and increase all MDA 60 feet. For inop MALSR, increase S-35 Cat D visibility to 1¼ mile.</p>	<p>MALSR</p>	<p>MISSED APPROACH: Climb to 2900, then climbing left turn to 3600 direct GRI VOR/DME and hold.</p>
--	--------------	---

ATIS 127.4	MINNEAPOLIS CENTER 119.4 278.8	GRAND ISLAND TOWER★ 118.2 (CTAF) 0 259.3	GND CON 121.9 259.3	CLNC DEL 126.05 (when tower closed)	UNICOM 122.95
---------------	-----------------------------------	---	------------------------	--	------------------



2900	3600	GRI	ADDEY GRI 7	Remain within 10 NM
VGSI and descent angles not coincident (VGSI Angle 2.60/TCH 55).				
GRI 1.6	GRI 2.7	2.96° TCH 45	3600	3700
1.2 4.2 NM				
CATEGORY	A	B	C	D
S-35	2260-½ 413 (500-½)		2260-¾ 413 (500-¾)	2260-1 413 (500-1)
CIRCLING	2300-1 453 (500-1)		2300-1½ 453 (500-1½)	2400-2 553 (600-2)

NC-2, 31 DEC 2020 to 28 JAN 2021

NC-2, 31 DEC 2020 to 28 JAN 2021