

LOC I-GRI	APP CRS	Rwy Idg	7002
111.9	353°	TDZE	1847
		Apt Elev	1847

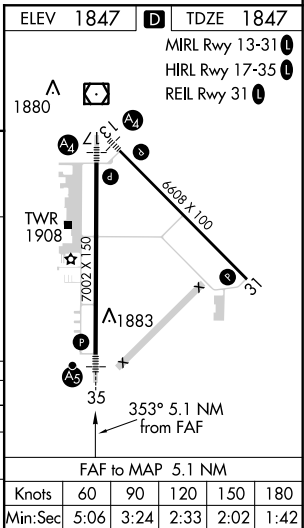
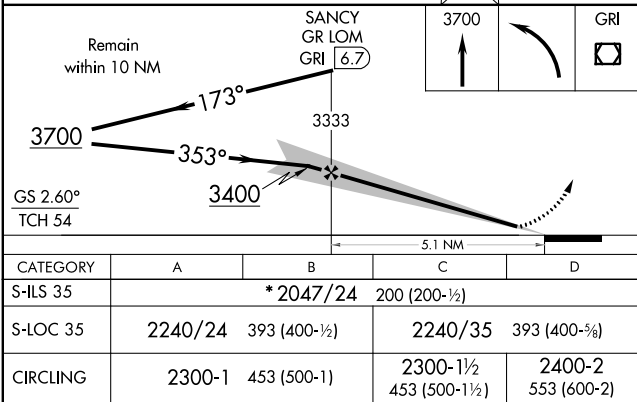
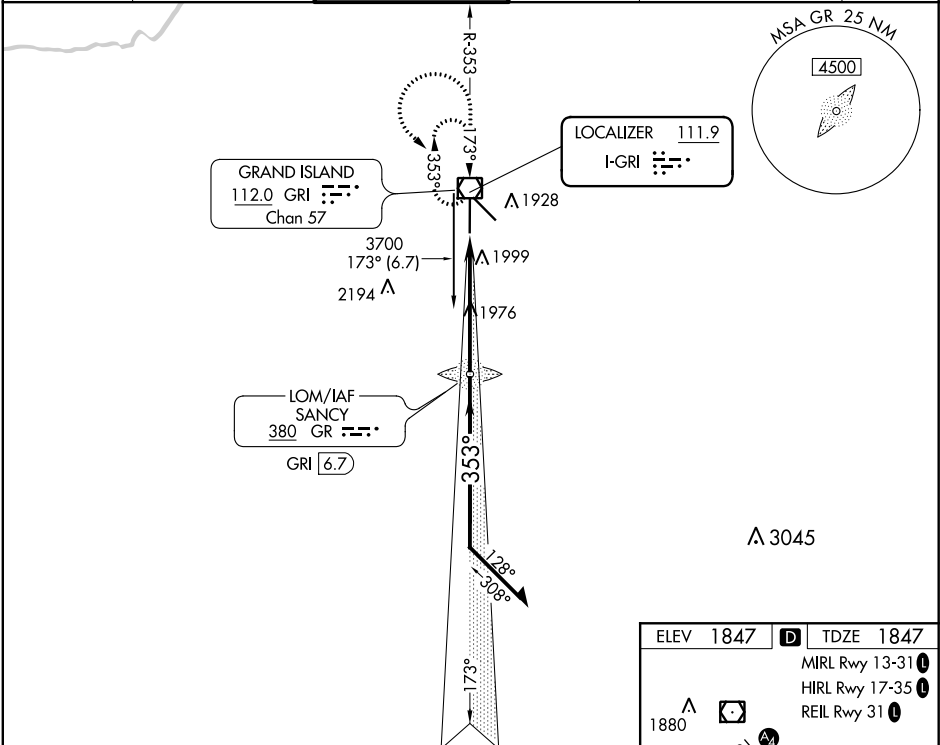
ILS or LOC RWY 35
CENTRAL NEBRASKA RGNL (GRI)

When local altimeter setting not received, use Aurora altimeter setting and increase all DA/MDA 60 feet, increase S-LOC 35 Cat C/D visibility to RVR 4500.
* RVR 1800 authorized with the use of FD or AP or HUD to DA (NA when using Aurora altimeter setting).

MALSR

MISSED APPROACH: Climb to 3700 then left turn direct GRI VOR/DME and hold.

ATIS	MINNEAPOLIS CENTER	GRAND ISLAND TOWER*	GND CON	CINC DEL	UNICOM
127.4	119.4 278.8	118.2 (CTAF) 259.3	121.9 259.3	121.9 (when tower closed)	122.95



NC-2, 31 DEC 2020 to 28 JAN 2021

NC-2, 31 DEC 2020 to 28 JAN 2021