

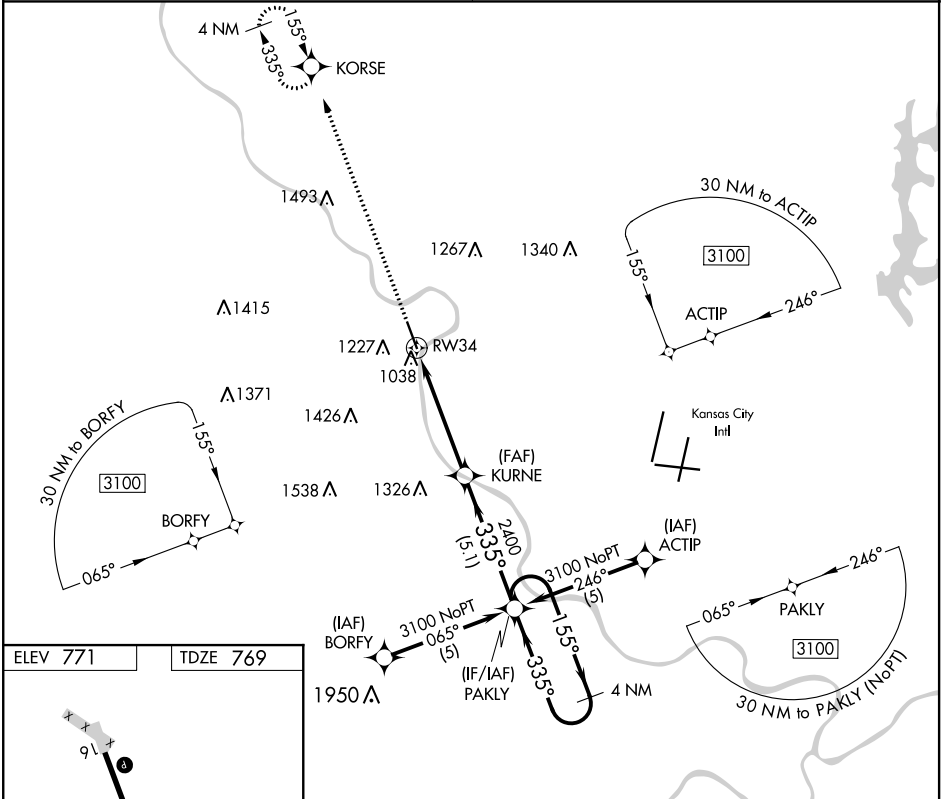
APP CRS	Rwy Idg	5318
335°	TDZE	769
	Apt Elev	771

RNAV (GPS) RWY 34

SHERMAN AAF (FLV)

RNP APCH.	MISSED APPROACH: Climb to 3000 direct KORSE and hold.
▼ ▲ NA	When local alimeter setting not received, use Kansas City Intl alimeter setting. Circling not authorized west of Rwy 16-34. Procedure NA at night.

KANSAS CITY APP CON 124.7 284.7	CTAF 126.2
------------------------------------	---------------



ELEV 771	TDZE 769	3000 KORSE	Visual Segment - Obstacles.	PAKLY 4 NM Holding Pattern
CATEGORY	A	B	C	D
LNAV MDA	1560-1 791 (800-1)	1560-1¼ 791 (800-1¼)	1560-2¼ 791 (800-2¼)	NA
CIRCLING	1560-1 789 (800-1)	1560-1¼ 789 (800-1¼)	1560-2¼ 789 (800-2¼)	NA