

APP CRS  
**155°**

Rwy Idg **5318**  
TDZE **772**  
Apt Elev **772**

**RNAV (GPS) RWY 16**  
SHERMAN AAF (FLV)

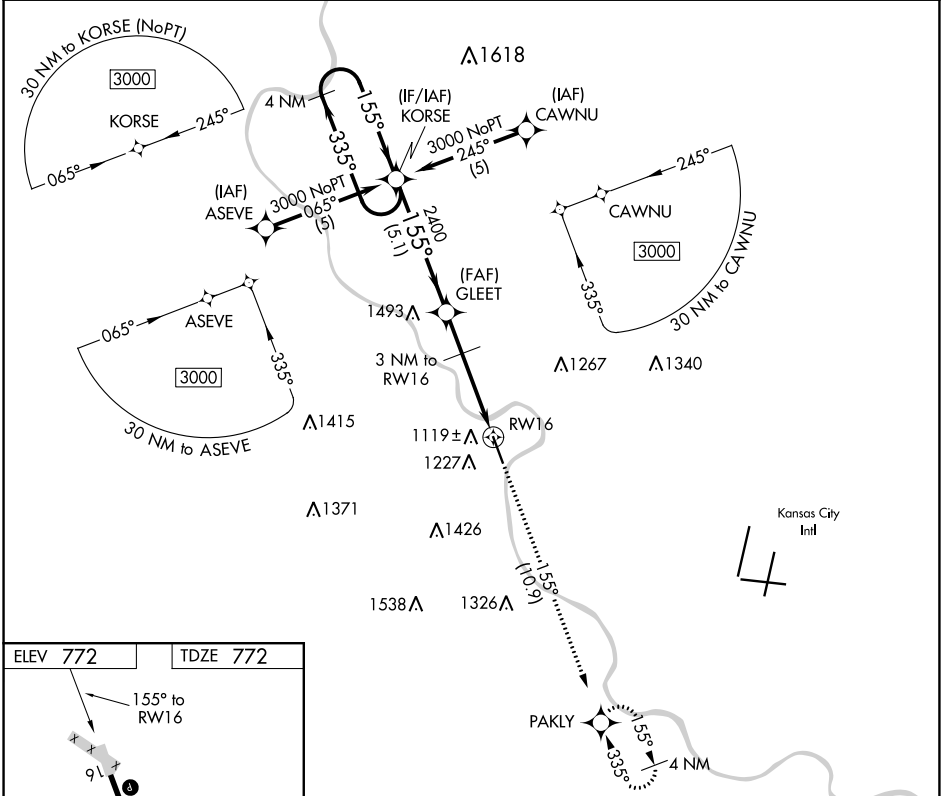
**NA**

DME/DME RNP-0.3 NA. Use Kansas City Intl altimeter setting. Circling not authorized west of Rwy 16-34.

MISSED APPROACH: Climb to 3100 via 155° course to PAKLY WP and hold.

KANSAS CITY APP CON  
**124.7 284.7**

CTAF  
**126.20**



ELEV **772**

TDZE **772**

HIRL Rwy 16-34 **0**

VGSI and descent angles not coincident (VGSI Angle 3.00/TCH 40).

3100 PAKLY

155° crs

CATEGORY	A	B	C	D
LNAV MDA	1520-1 748 (800-1)	1520-1¼ 748 (800-1¼)	1520-2¼ 748 (800-2¼)	NA
CIRCLING	1520-1 748 (800-1)	1520-1¼ 748 (800-1¼)	1520-2¼ 748 (800-2¼)	NA