

APP CRS	Rwy Idg	6200
262°	TDZE	3927
	Apt Elev	3931

RNAV (GPS) RWY 26
ALLIANCE MUNI (AIA)

RNP APCH.

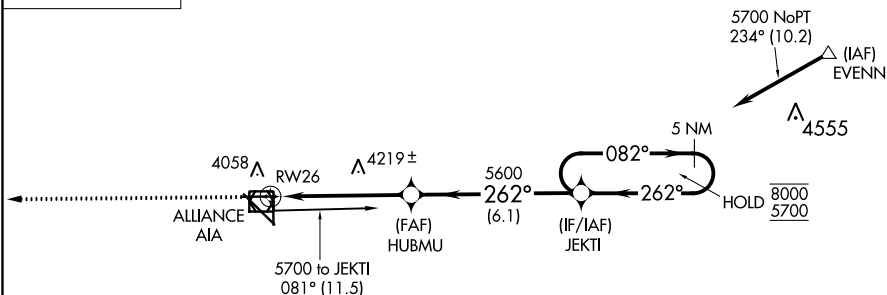
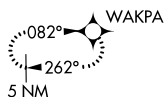
MISSED APPROACH: Climb to 6000 direct WAKPA and hold.

ASOS
135.075

DENVER CENTER
127.95 338.2

UNICOM
123.0 (CTAF) **L**

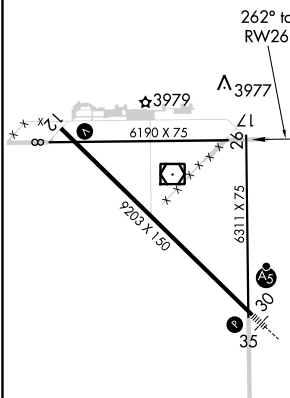
MISSED APCH FIX



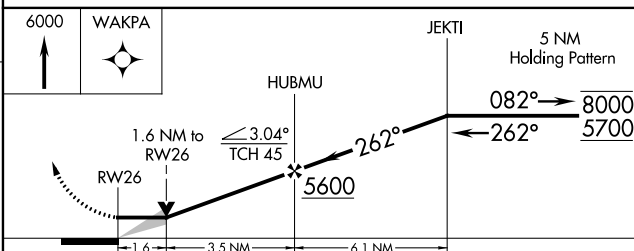
ELEV 3931	D	TDZE 3927
-----------	----------	-----------

D

E 3927

RE|L Rwy 12 **L**

MIRL Rwy 8-26 and 12-30 L



CATEGORY	A	B	C	D
LNAV MDA	4480-1	553 (600-1)	4480-1 $\frac{5}{8}$ 553 (600-1 $\frac{5}{8}$)	4480-1 $\frac{3}{4}$ 553 (600-1 $\frac{3}{4}$)
CIRCLING	4480-1 549 (600-1)	4500-1 569 (600-1)	4520-1 $\frac{5}{8}$ 589 (600-1 $\frac{5}{8}$)	4520-2 589 (600-2)

ALLIANCE, NEBRASKA

Orig-A 08NOV18

ALLIANCE MUNI (AIA)

RNAV (GPS) RWY 26

42°03'N-102°48'W

NC-2, 31 DEC 2020 to 28 JAN 2021