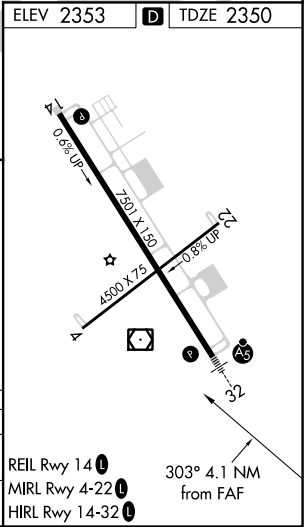
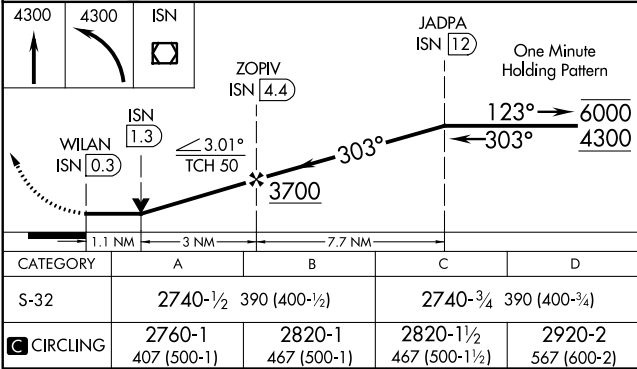
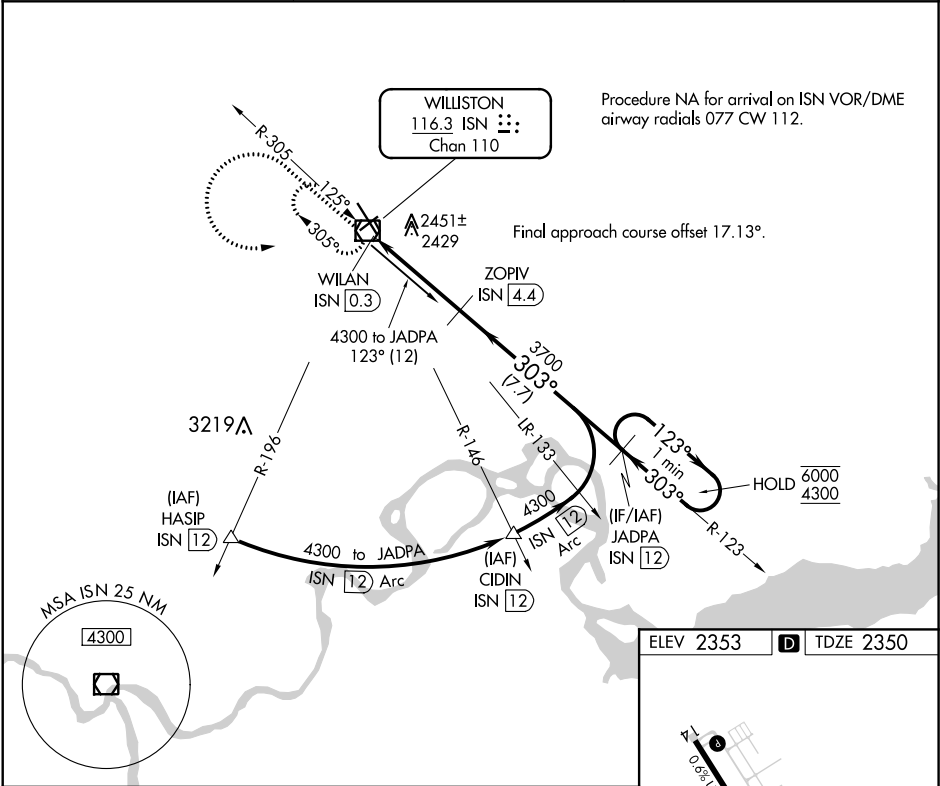


VOR/DME ISN	APP CRS	Rwy Idg	7501
116.3	303°	TDZE	2350
Chan 110		Apt Elev	2353

VOR RWY 32
WILLISTON BASIN INTL (XWA)

DME required.	MALSR	MISSED APPROACH: Climb to 4300 then climbing left turn to 4300 direct ISN VOR/DME and hold
For inop ALS, increase S-32 Cats C/D visibility to 1½ SM.		

ASOS 125.925	SALT LAKE CITY CENTER 126.85 305.2	UNICOM 122.8 (CTAF) 1
-----------------	---------------------------------------	--------------------------



NC-1, 31 DEC 2020 to 28 JAN 2021

NC-1, 31 DEC 2020 to 28 JAN 2021