

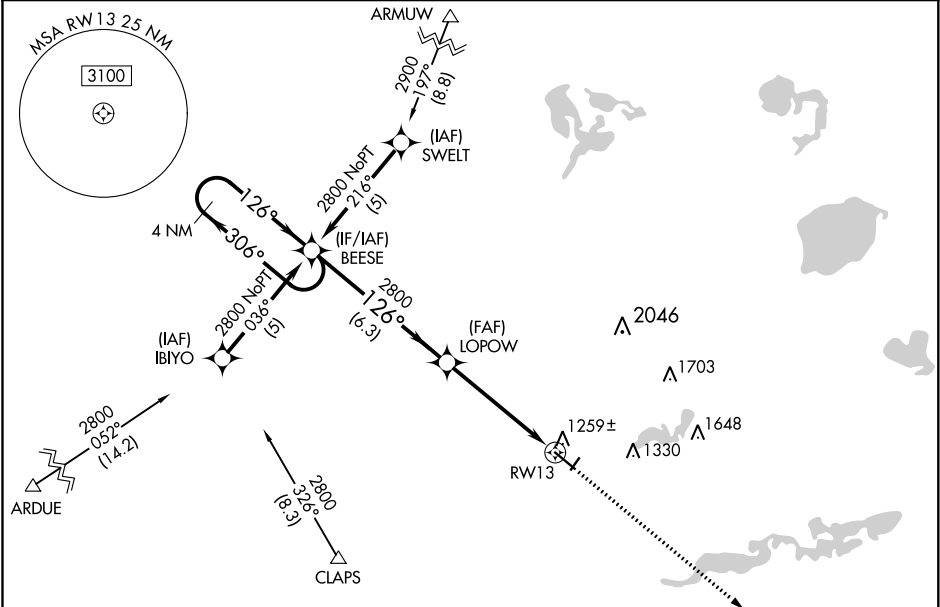
WAAS CH <b>93902</b> <b>W13A</b>	APP CRS <b>126°</b>	Rwy Idg TDZE <b>1124</b> Apt Elev <b>1126</b>
--	------------------------	---

RNAV (GPS) RWY 13

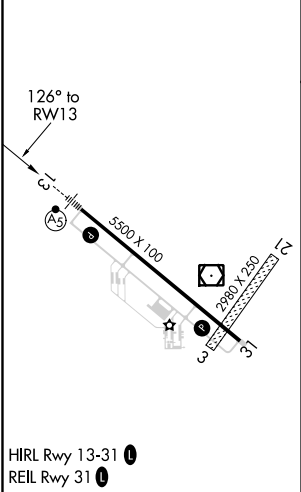
WILLMAR MUNI-JOHN L RICE FIELD (BDH)

RNP APCH. <div><div>▼</div><div>▲</div></div> <div>If local altimeter setting not received, use Olivia Rgnl altimeter setting and increase all DAs/MDAs 60 feet. For uncompensated Baro-VNAV systems, LNAV/VNAV NA below -17°C or above 46°C. Baro-VNAV and VDP NA when using Olivia Rgnl altimeter setting. Circling Rwy 3, 21 NA.</div>	MALSR <div><div>AS</div><div></div></div>	MISSED APPROACH: Climb to 2800 direct HEIPV and hold.
--	--	---

AWOS-3 <b>113.7</b>	MINNEAPOLIS CENTER <b>125.5 323.1</b>	UNICOM <b>122.8 (CTAF) 0</b>
------------------------	--	---------------------------------



ELEV 1126	TDZE 1124
-----------	-----------



4 NM Holding Pattern		BEESE	LOPOW	2800	HEIPV
2800		306°	126°	2800	
GP 3.00°		6.3 NM		3.6 NM	1.4 NM
TCH 52		*1.4 NM to RWY13		*LNAV only	
CATEGORY	A	B	C	D	
LPV DA	1387-1		263 (300-1)		
LNAV/VNAV DA	1480-1¼		356 (400-1¼)		
LNAV MDA	1620-1	496 (500-1)	1620-1¼ 496 (500-1¼)	1620-1½ 496 (500-1½)	
CIRCLING	1620-1	494 (500-1)	1620-1½ 494 (500-1½)	1680-2 554 (600-2)	

NC-1, 31 DEC 2020 to 28 JAN 2021

NC-1, 31 DEC 2020 to 28 JAN 2021