

WAAS CH 56418 W12A	APP CRS 118°	Rwy Idg TDZE 1194 Apt Elev 1194
--	------------------------	---

RNAV (GPS) RWY 12

MYERS FIELD (CNB)

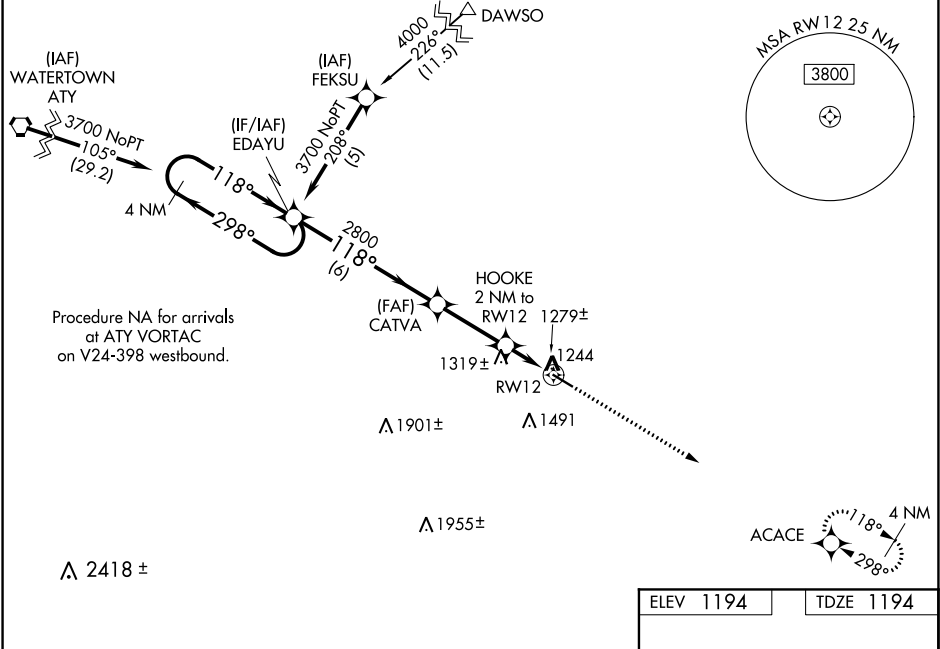
⚠

⚠

For uncompensated Baro-VNAV systems, LNAV/VNAV NA below -17°C (2°F) or above 46°C (114°F). DME/DME RNP-0.3 NA. Visibility reduction by helicopters NA. VDP NA with Lac Qui Parle County altimeter setting. Baro-VNAV NA when using Lac Qui Parle County altimeter setting. When local altimeter setting not received, use Lac Qui Parle County altimeter setting and increase all DA 53 feet, and all MDA 60 feet, increase LNAV/VNAV all Cats visibility ¼ mile, LNAV Cats C and D visibility ¼ mile.

MISSED APPROACH:
Climb to 3700 direct
ACACE and hold.

AWOS-3 118.575	MINNEAPOLIS CENTER 128.5 306.2	CTAF 122.9 0
--------------------------	--	------------------------



VGSI and RNAV glidepath not coincident (VGSI Angle 3.00/TCH 25).				
4 NM Holding Pattern		EDAYU	CATVA	HOOKE 2 NM to RW12
3700 ← 298° 118° →		2800	2800	118° to RW12
GP 3.00° TCH 40			*1860	*1.1 NM to RW12
		6 NM	2.9 NM	0.9 1.1 NM
CATEGORY	A	B	C	D
LPV DA	1444-1 250 (300-1)			
LNAV/VNAV DA	1598-1½ 404 (500-1½)			
LNAV MDA	1580-1 386 (400-1)		1580-1¼ 386 (400-1¼)	
CIRCLING	1700-1 506 (600-1)		1700-1½ 506 (600-1½)	1800-2 606 (700-2)

ELEV 1194 TDZE 1194

118° to RW12

4648 X 75

30

MIRL Rwy 12-30 0
REIL Rwy 12 and 30 0