

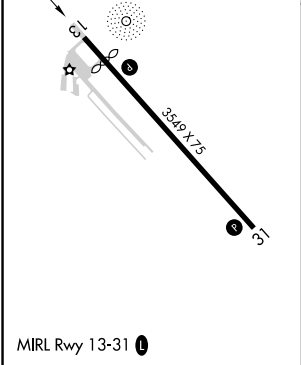
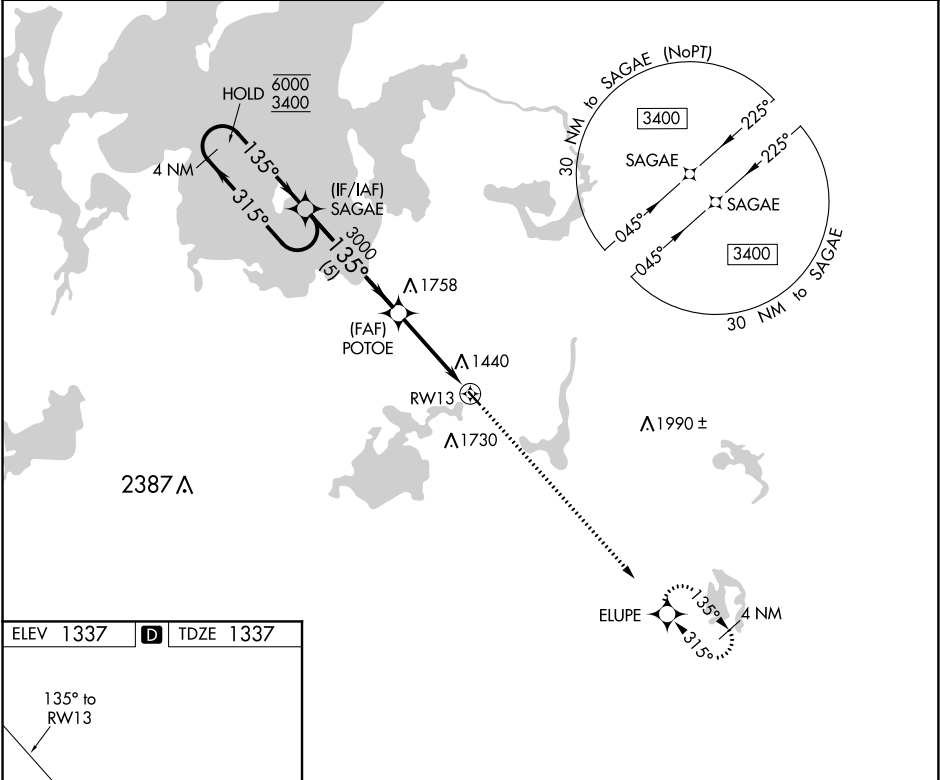


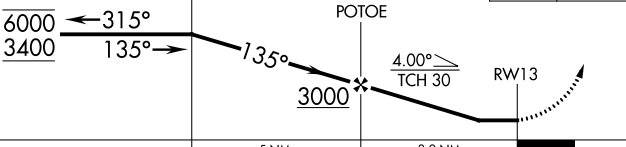



APP CRS 135°	Rwy Idg TDZE Apt Elev	3109 1337 1337
------------------------	-----------------------------	---

RNAV (GPS) RWY 13
LONGVILLE MUNI (XVG)

RNP APCH.		MISSED APPROACH: Climb to 3100 direct ELUPE and hold.	
	Procedure NA at night.		
	Rwy 13 helicopter visibility reduction below 1 SM NA.		
AWOS-3 118.275	MINNEAPOLIS CENTER 118.05 239.0	GCO 121.725	CTAF 122.90



VGSI and descent angles not coincident [VGSI Angle 4.00/TCH 19].				3100	ELUPE
4 NM Holding Pattern					
					
5 NM				3.9 NM	
CATEGORY	A	B	C	D	
LNAV MDA	1820-1	483 (500-1)	NA		
 CIRCLING	1860-1 523 (600-1)	2080-1 743 (800-1)	NA		

NC-1, 31 DEC 2020 to 28 JAN 2021

NC-1, 31 DEC 2020 to 28 JAN 2021