

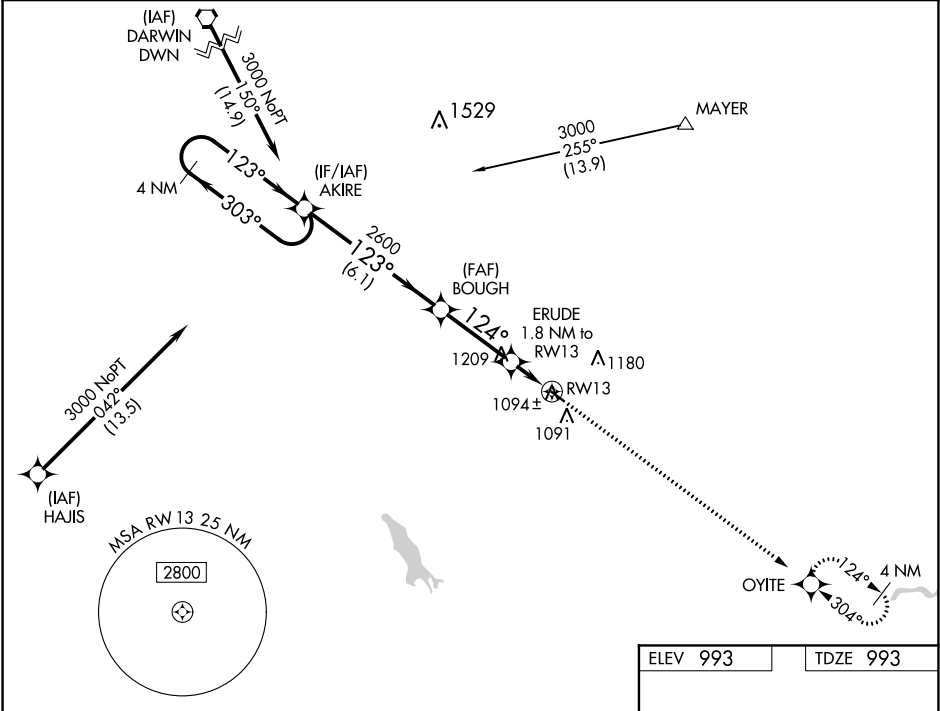
WAAS CH 99437 W13A	APP CRS 124°	Rwy Idg TDZE 993 Apt Elev 993
--	------------------------	---

RNAV (GPS) RWY 13

GLENCOE MUNI (GYL)

<div> <div></div> <div> For uncompensated Baro-VNAV systems, LNAV/VNAV NA below -16°C (4°F) or above 54°C (130°F). DME/DME RNP-0.3 NA. Rwy 13 helicopter visibility reduction below ¾ SM NA. </div> </div>	<div> MISSED APPROACH: Climb to 3000 direct OYITE and hold. </div>
--	--

<div> AWOS-3 119.625 </div>	<div> MINNEAPOLIS APP CON 134.7 284.7 </div>	<div> UNICOM 122.8 (CTAF) 0 </div>
--	---	---



4 NM Holding Pattern		VGSI and RNAV glidepath not coincident (VGSI Angle 3.00/TCH 28).		3000	OYITE
AKIRE		BOUGH		ERUDE	1.8 NM to RWY 13
3000		2600		*1.1 NM to RWY 13	
GP 3.00° TCH 40		*1600		RWY 13	
6.1 NM		3.1 NM		0.7 NM	
CATEGORY	A	B	C	D	
LPV DA	1270-1	277 (300-1)	NA		
LNAV/VNAV DA	1246-1	253 (300-1)	NA		
LNAV MDA	1360-1	367 (400-1)	NA		
CIRCLING	1420-1 427 (500-1)	1480-1 487 (500-1)	NA		

