

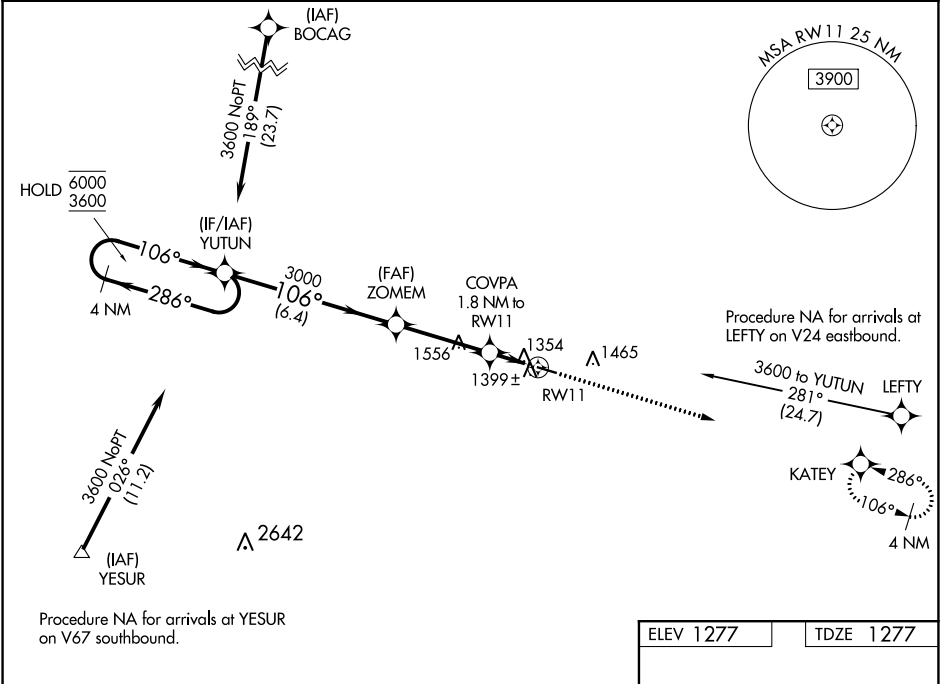
WAAS CH 65829 W11A	APP CRS 106°	Rwy Idg TDZE 1277 Apt Elev 1277
--	------------------------	---

RNAV (GPS) RWY 11

FILLMORE COUNTY (FKA)

RNP APCH.	MISSED APPROACH: Climb to 3200 direct KATEY and hold.
<div><div>T</div><div>Rwy 11 helicopter visibility reduction below ¾ SM NA.</div></div> <div><div>A</div><div>For uncompensated Baro-VNAV systems, LNAV/VNAV NA below -17°C or above 54°C.</div></div>	

AWOS-3 118.55	ROCHESTER APP CON ★ 119.8 251.125	CTAF 122.9 0
-------------------------	---	------------------------



4 NM Holding Pattern					VGSI and RNAV glidepath not coincident (VGSI Angle 3.00/TCH 26).	3200	KATEY
YUTUN					ZOMEM	COVPA	
6000 ← 286°					3000	1.8 NM to RW11	
3600 → 106°						*1.1 NM to RW11	
GP 3.00°						RW11	
TCH 40							
					6.4 NM	3.5 NM	0.7
							1.1 NM
CATEGORY	A	B	C	D			
LPV DA	1527-1	250 (300-1)		NA			
LNAV/VNAV DA	1573-1	296 (300-1)		NA			
LNAV MDA	1660-1	383 (400-1)	1660-1½ 383 (400-1½)	NA			
CIRCLING	1700-1 423 (500-1)	1900-1 623 (700-1)	1900-1¾ 623 (700-1¾)	NA			

