

WAAS CH 82730 W04A	APP CRS 038°	Rwy Idg TDZE Apt Elev	3200 1076 1076
--	------------------------	-----------------------------	---

RNAV (GPS) RWY 4

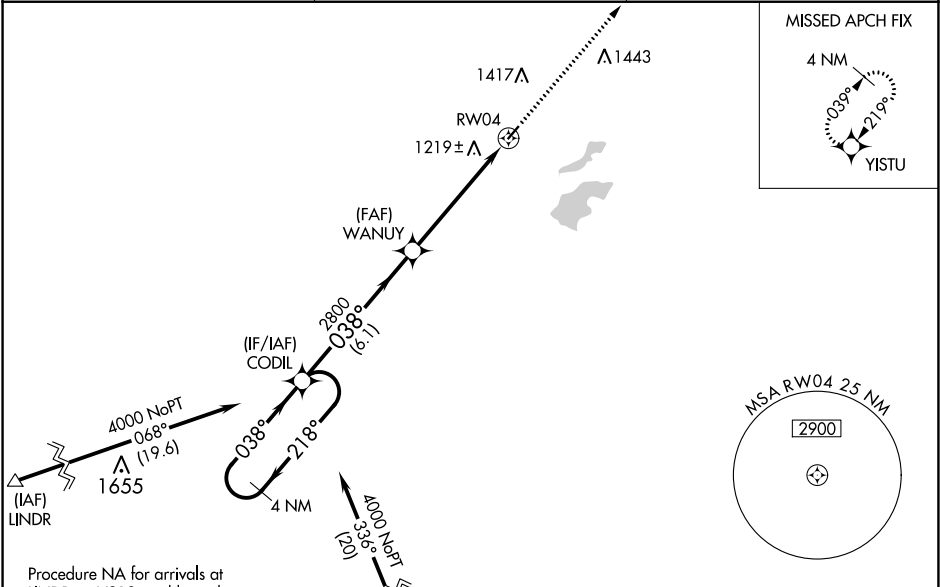
MOOSE LAKE CARLTON COUNTY (MZH)

▼

For uncompensated Baro-VNAV systems, LNAV/VNAV NA below -17°C (2°F) or above 54°C (130°F). Straight-in minimums NA at night. DME/DME RNP-0.3 NA. Visibility reduction by helicopters NA. Baro-VNAV NA when using Cloquet altimeter setting. When local altimeter setting not received, use Cloquet altimeter setting and increase all DA 77 feet and all MDA 80 feet; increase LPV all Cats visibility 1/8 mile and LNAV/VNAV all Cats visibility 3/8 mile.

MISSED APPROACH: Climb to 4000 direct YISTU and hold.

AWOS-3 119.125	DULUTH APP CON 125.45 233.7	CTAF 122.9 0
--------------------------	---------------------------------------	------------------------



ELEV 1076

TDZE 1076

4 NM Holding Pattern

4000

218°

038°

GP 3.00°

TCH 40

VGSI and RNAV glidepath not coincident (VGSI Angle 3.00/TCH 25).

CODIL

2800

038°

WANUY

2800

6.1 NM

5.3 NM

RW04

4000

YISTU

CATEGORY	A	B	C	D
LPV DA	1326-1	250 (300-1)		NA
LNAV/VNAV DA	1529-1½	453 (500-1½)		NA
LNAV MDA	1560-1	484 (500-1)		NA
CIRCLING	1660-1	584 (600-1)		NA

REIL Rwy 4 and 22 0

MIRL Rwy 4-22 0