

WAAS CH 53318 W32A	APP CRS 324°	Rwy Idg 4999 TDZE 1814 Apt Elev 1814
--	------------------------	---

RNAV (GPS) RWY 32

MERCER COUNTY RGNL (HZE')

RNP APCH.

▼

⚠

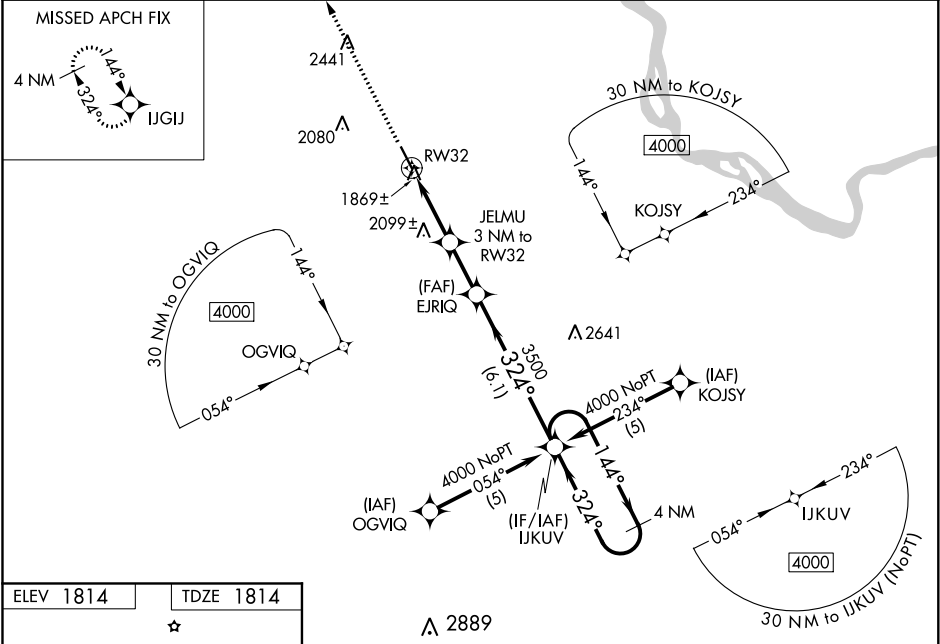
❄

-41°C/-42°F

When VGSI inoperative, procedure NA at night. Rwy 14 helicopter visibility reduction below 1 SM NA. When local altimeter setting not received, use Bismarck altimeter setting. For uncompensated Baro-VNAV systems, LNAV/VNAV NA below -18°C or above 54°C. Baro-VNAV NA when using Bismarck altimeter setting.

MISSED APPROACH: Climb to 4000 direct IJGU and hold.

AWOS-3PT 118.675	MINNEAPOLIS CENTER 124.25 236.825	UNICOM 122.8 (CTAF) 0
----------------------------	---	---------------------------------



ELEV 1814

TDZE 1814

☆

0.6% UP

4999 X 15

324° to RW32

32

MIRL Rwy 14-32 0

REIL Rwy 32 0

4000

IJGU

VGSI and RNAV glidepath not coincident (VGSI Angle 3.00/TCH 29).

4 NM Holding Pattern

IJKUV

EJRIQ

3500

324°

144°

4000

3500

2820*

3 NM

2.1 NM

6.1 NM

GP 3.00°

TCH 45

*LNAV only.

RW32

JELMU
3 NM to RW32

3 NM

2.1 NM

6.1 NM

CATEGORY	A	B	C	D
LPV DA	2192-1¼	378 (400-1¼)		NA
LNAV/VNAV DA	2352-2	538 (600-2)		NA
LNAV MDA	2480-1	666 (700-1)	2480-1¼ 666 (700-1¼)	NA
CIRCLING	2480-1	666 (700-1)	2480-1¼ 666 (700-1¼)	NA